

# Jumeirah

MARSA AL ARAB



A PLAYGROUND FOR HORIZON-SEEKERS

HOTEL OVERVIEW	03
ROOMS & SUITES	07
RESIDENCES' OVERVIEW	10
DINING & ENTERTAINMENT	11
BEACH & POOL BARS	14
WELLNESS & LEISURE	15
JUMEIRAH MARSA AL ARAB IN NUMBERS	17
RESORT MAP	18





# INTRODUCING JUMEIRAH MARSA AL ARAB

A new dawn of otherworldly dining, wellness and entertainment in Dubai





Designed by Shaun Killa, renowned for his flair for statement architecture including the Museum of the Future and his collaboration with British architect Tom Wright in Burj Al Arab Jumeirah's timeless design, Jumeirah Marsa Al Arab marks a distinctive new generation of resorts, hotels and residences for the Dubai-born brand.





Rising from Dubai's exclusive golden peninsula, gently lapped by azure waves, Jumeirah Marsa Al Arab's alluring design is set to make it one of Dubai's most glamorous addresses. An evocative world of wellness, extraordinary cuisine and mixology, all infused with the charm and warmth of Arabian hospitality awaits.



## ENCAPSULATING THE ALLURE OF LIFE BY THE WATER

Inimitable glamour and meticulous craftsmanship carry you into ethereal spaces designed for relaxation, inspired by the world's ultra-yachts. Glide past infinite views of Burj Al Arab Jumeirah's iconic silhouette on Dubai's most exclusive private beach or gaze out across the extraordinary city.

The resort's sleek rooms and suites can accommodate up to two adults and two children. With extensive terraces combining in-door and out-door living Marsa Al Arab's rooms are ideal for families and couples alike.







## ROOMS

The allure of Italy's iconic Riva boat – the Jaguar of the sea and the go-to for 60s water ski glamour – draws you into this stylish space, with extraordinary views to match. Rooms are starting from 60sqm with private terrace.



## SUITES

Borrowing bold design cues from the handsome Speedster, this space rewards long journeys with a rejuvenating stay, styled with sporty lines and energising interiors. Suites are starting from 120sqm with private terrace.



## PRESIDENTIAL SUITE

Drift into holiday mode aboard the master of the sea. Our powerful two-bedroom Presidential suite is designed with meticulous detailing and the palatial glamour of a superyacht. Featuring a plunge pool on the spacious terrace, this suite is a promise of unforgettable nautical escape. Presidential suite is 310sqm with 257sqm terrace.



## ROYAL SUITE

The refined interiors of the two-bedroom Royal suite create the ultimate escape within our sumptuous palace, which seemingly floats on the water. This suite with plunge pool and grand terrace boasts views of the Arabian Sea, and as its name suggests, is worthy of royalty. Royal suite is 355sqm with 310sqm terrace.





## PEARL SUITE

The two-bedroom Pearl suite is the epitome of glamorous travel, wrapped in a panoramic terrace with infinity views overlooking Dubai's sparkling shoreline from sunrise to sunset. With a state-of-the-art private kitchen, this splendid suite is the most desired address for high-end events and gatherings for up to 80 people. Pearl Suite is 611sqm with 459sqm private terrace





## CHIC COASTAL LIVING

Jumeirah Marsa Al Arab features 82 one-, two- and three-bedroom residences, which all enjoy elevated four-metre-high ceilings, with many rooms featuring floor-to-ceiling balcony windows, creating a sense of grandeur and space. Perfect for families and group of friends, all residences are equipped with a private kitchen. The resort's lavish landscape includes glittering waters, beautiful terraces and lush gardens, complete with private cabana

areas and pavilions. Residences feature a spectacularly designed pool, as well as a restaurant.

- ◆ One-bedroom residences starting from 95sqm with private terrace
- ◆ Two-bedroom residences starting from 170sqm with private terrace
- ◆ Three-bedroom residences starting from 320sqm with private terrace





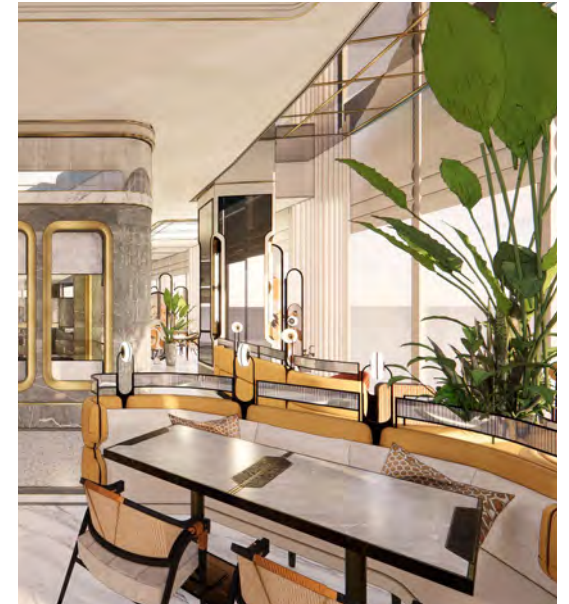
## TANTALISING GASTRONOMY

Feast on extraordinary cuisine in divine spaces. Unite, celebrate or simply enjoy a moment of peaceful reflection by the water.





As refreshing as the breeze at the front of a ship, Jumeirah Marsa Al Arab showcases a unique four-in-one dining experience. Begin your day with a delicious breakfast, cooked just as you like with a varied range of international cuisine. As night falls, however, the four oceanfront restaurants emerge, each with an individual culinary story. The first crafts regional dishes inspired by the azure coastline of the Mediterranean; the second is an ode to classic pan-Asian flavours; the third serves the finest Japanese delicacies, while the fourth's decadent interiors set the scene for sensational Indian cuisine. All are housed under one roof, connected by four alfresco terraces and a show-stopping central bar, reminiscent of a floating pearl.





Breeze into our Mykonos-inspired restaurant reminiscent of a beachfront retreat where the style and mystique of the Mediterranean are combined with Jumeirah Marsa Al Arab's breath-taking design. Our Californian inspired restaurant, adjacent to the spa, serves nourishing dishes set to the incredible backdrop of Dubai's sparkling shoreline. Indulge in our grand Venetian restaurant and bar which is a modern-day classic showcasing the spirit and splendour of the finest in Italian cuisine. Meanwhile our classy club style restaurant, located in Residences, focuses on contemporary and generous take on comfort-food.







## HOLISTIC WELLNESS

Interiors drift effortlessly into the outdoors, helping you slip into a state of blissful relaxation at Fitness and Spa, with floor-to-ceiling views over the stunning Burj Al Arab Jumeirah.



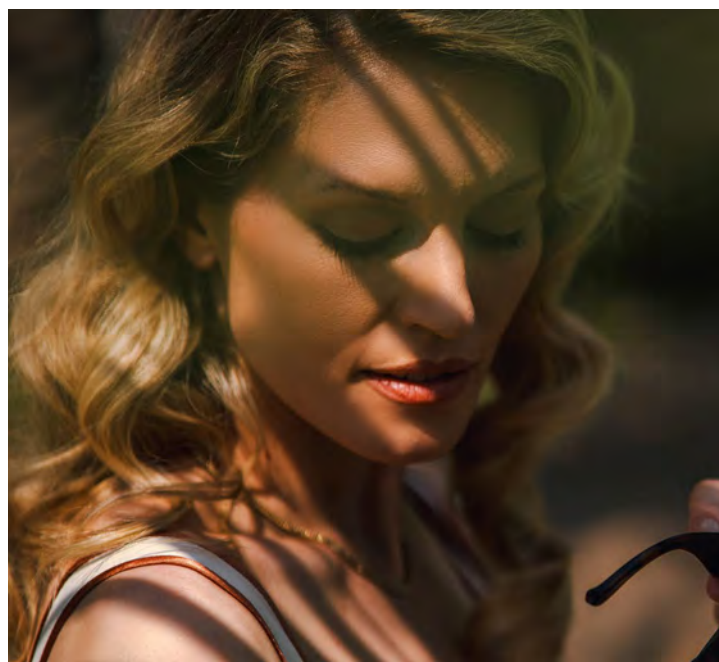




Bathed with natural light, spa offers awe-inspiring views of Burj Al Arab Jumeirah, which rises majestically from the sparkling Arabian Gulf.

Set over three floors – one of which is dedicated to women – the spa has 13 treatment rooms, each of which extend to a private terrace cooled by a soft sea breeze. Sunloungers invite you to linger and marvel at the panorama.

For an exhilarating workout, plunge into the stunning 20-metre pool or push yourself to your limits in the Fitness Studio. When you've finished training, retreat to the sauna, steam room or mixed hammam to rejuvenate your body and mind.





## MARSA AL ARAB IN NUMBERS

- ❖ 303 rooms and 83 suites
- ❖ 82 serviced residences overlooking the sparkling Arabian Gulf
- ❖ 10 world-class dining concepts and nine bars
- ❖ 82 berth super-yacht marina
- ❖ Five pools and two private beaches
- ❖ 13 spa treatment rooms
- ❖ Fitness studio, mixed hammam, sauna and steam bath
- ❖ Barber salon and hairdressers









# Jumeirah

MARSA AL ARAB

[jumeirah.com](https://jumeirah.com)

© Jumeirah International LLC 2023

All rights reserved. No part of this publication may be reproduced in any material form (including photocopying or storage in any medium by electronic means) without the written permission of Jumeirah Hotels & Resorts.