

**مصنع سبائك الوجبة ذ.م.م**  
**AL WAJBA ALLOYS FACTORY W.L.L**

A Division of Seashore Group



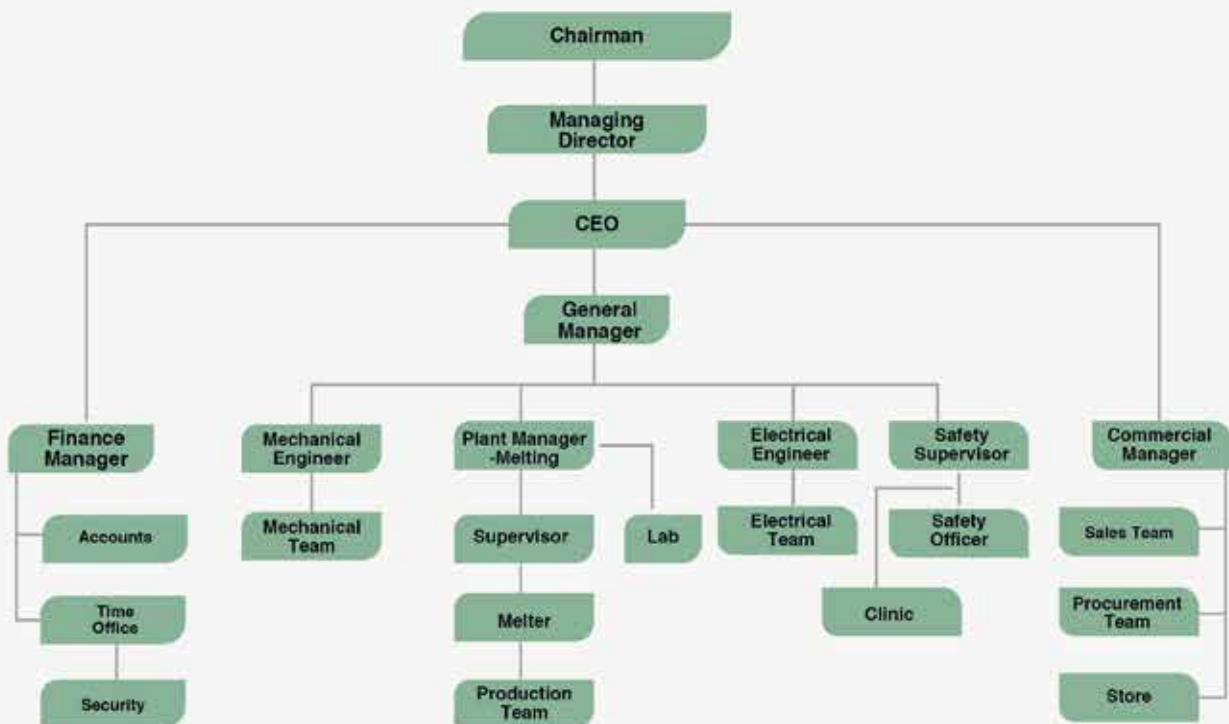
## THE WORLD OF AL WAJBA ALLOYS FACTORY

Al Wajba Alloys is a part of Seashore Group of companies in the State of Qatar. Our factory is located at Al Afja, Mesaieed, Qatar. Al Wajba Alloys specializes in recycling of Aluminium scraps and Copper Scraps.

Seashore Group company was established in 1989, a leading business conglomerate in the state of Qatar. We specialize in recycling the different types of ferrous and nonferrous materials. Iron Scraps, Aluminium Scraps, Copper Scraps, Battery Scraps, Plastic Scraps Etc.



## AL WAJBA ALLOYS FACTORY ORGANOGRAM



# WHAT DOES ALWJBA ALLOYS?

We are a leading force in sustainable metal recycling, specializing in aluminium and copper materials. Our commitment to environmental responsibility, innovative process and community engagement sets us apart in the recycling industry.

Our advanced recycling facility utilizes cutting-edge technologies for efficient sorting, processing and purification of aluminium and copper scraps.

We produce the internationally approved quality Aluminium ingots in different grades with JIS and ASTM standard, ADC12, UBC, 3105, 6061, 6063. We can relieve you of all your worries by taking over the entire process. From collection and distribution to processing.



## OUR MISSION

Our mission is to revolutionize the recycling industry by leading the charge in sustainable aluminium and copper recycling, we are committed to transforming discarded metal materials into valuable resources, and minimizing the environmental impact of traditional mining and manufacturing processes.

## OUR VISION

Our vision is to be a global pioneer in responsible metal recycling. We envision a world where every scrap of aluminium and copper is given new life, reducing waste, conserving resources, and creating a more sustainable planet for generations to come.

## OUR VALUES

We prioritize the well-being of our planet above all else. Our actions are guided by a deep commitment to reducing our ecological footprint and fostering sustainable practices through our operations.

## COMMUNITY ENGAGEMENT

We actively engage with schools, businesses and local communities through workshops, educational programs, and environmental awareness campaigns.



# OUR PRODUCTS

## ALUMINIUM INGOTS

A common form of semi-finished aluminium products that are used as raw materials in various industries. Aluminium ingots serve as a crucial input for manufacturing a wide range of products due to their light weight, corrosion-resistance, and malleable properties.



### Aluminium Ingot Grades

| Grade | Elemental concentration ( In wt % ) |          |              |         |           |           |          |          |        |        |           |            |              | Al        |
|-------|-------------------------------------|----------|--------------|---------|-----------|-----------|----------|----------|--------|--------|-----------|------------|--------------|-----------|
|       | Si                                  | Fe       | Cu           | Mn      | Mg        | Cr        | Zn       | Ti       | Ni     | Sn     | Pb        | other each | others total |           |
| 6063  | 0.20-0.60                           | 0.35 MAX | 0.1 MAX      | 0.1 MAX | 0.45-0.90 | 0.1MAX    | 0.1 MAX  | 0.1MAX   | NA     | NA     | 0.005 MAX | 0.05MAX    | 0.15 MAX     | REMAINDER |
| 6061  | 0.40-0.80                           | 0.70 MAX | 0.15-0.40MAX | 0.15MAX | 0.80-1.20 | 0.04-0.35 | 0.25 MAX | 0.15 MAX | NA     | NA     | NA        | 0.05MAX    | 0.15 MAX     | REMAINDER |
| ADC12 | 9.6 TO 12.0                         | 1.3 MAX  | 1.5 TO 3.5   | 0.5 MAX | 0.3MAX    | NA        | 1.0MAX   | NA       | 0.5MAX | 0.2MAX | NA        | NA         | NA           | REMAINDER |
| 3105  | 0.6MAX                              | 0.7MAX   | 0.3MAX       | 0.3-0.8 | 0.20-0.8  | 0.2 MAX   | 0.40 MAX | 0.10 MAX | NA     | NA     | NA        | 0.05MAX    | 0.15 MAX     | REMAINDER |
| AKSM2 | 4.0-6.0                             | 1.0MAX   | 1.5-3.5      | 0.2-0.8 | 0.2-0.8   | NA        | 1.5MAX   | 0.05-0.2 | 0.5MAX | NA     | NA        | NA         | NA           | REMAINDER |

# COPPER INGOTS & RODS

Copper ingots are semi-finished products made from refined copper that have been cast into specific shapes for further processing or use in various industries. Copper ingots serve as a foundational material in manufacturing and are valued for their excellent electrical conductivity, thermal properties, corrosion resistance and malleability.



## Chemical composition:

| Elements                | Unit | ASTM B49 | Specification |
|-------------------------|------|----------|---------------|
| Copper (Cu), min        | Min% | 99.90    | 99.95         |
| Tellurium (Te), max     | ppm  | -        | 5             |
| Selenium (Se), max      | ppm  | -        | 5             |
| Bismuth (Bi), max       | ppm  | -        | 6             |
| Group total, max        | ppm  | -        | 15            |
| Antimony (Sb), max      | ppm  | -        | 8             |
| Arsenic (As), max       | ppm  | -        | 2             |
| Tin (Sn), max           | ppm  | -        | 5             |
| Lead (Pb), max          | ppm  | -        | 7             |
| Iron (Fe), max          | ppm  | -        | 3             |
| Nickel (Ni), max        | ppm  | -        | 5             |
| Sulfur (S), max         | ppm  | -        | 8             |
| Silver (Ag), max        | ppm  | -        | 12            |
| Oxygen (O)              | ppm  | -        | 350           |
| Maximum allowable total | ppm  | -        | 120           |

<sup>p</sup> Analytical method for determining impurity levels of copper listed in table shall be in accordance with Specification B115.

# **SEASHORE GROUP OF INDUSTRIES**

**AL WAJBA ALLOYS FACTORY**

**SEASHORE ENGINEERING & CONTRACTING**

**SEASHORE STEEL**

**SEASHORE PIPES**

**SEASHORE CABLES**

**SEASHORE PANELS**

**VOLTA BATTERY RECYCLING FACTORY**

**SEASHORE PLASTIC FACTORY**

**SEASHORE RECYCLING & SUSTAINABILITY CENTER**

**SEASHORE GALVANIZING**

**SEASHORE WASTE MANAGEMENT**

**SEASHORE AUTOMOBILES**

**SEASHORE EQUIPMENT AND LOGISTICS INFRASTRUCTURE**

**SEASHORE TRADING**

**SEASHORE HYDRAULICS AND FUEL INJECTION SYSTEM**



## مصنع سبائك الوجبة ذ.م.م AL WAJBA ALLOYS FACTORY W.L.L

تليفون : +974 4436 1241 - فاكس : +974 4436 1248 - س ت : 91507 - ص ب : 41100 - المنطقة الصناعية - الدوحة - قطر  
Tel: +974 4436 1241, +974 5521 4395-Fax: +974 44361248-C.R: 91507-PO Box: 41100 Industrial Area Doha-Qatar