



## MAKKAH CLOCK ROYAL TOWER, A FAIRMONT HOTEL PRESS KIT

فندق ساعة مكة  
فيرمونت  
MAKKAH CLOCK ROYAL TOWER  
A FAIRMONT HOTEL

### HOTEL OVERVIEW

Makkah Clock Royal Tower, A Fairmont Hotel rises above the Holy City as a beacon of luxury and spirituality. As the closest hotel to the Kaaba, it offers unparalleled views of Al-Masjid Al-Haram and sets a new standard for sacred hospitality. With 76 floors and 1662 rooms and suites, it blends iconic architecture with refined service for pilgrims and travellers alike.

### UNIQUE SELLING POINTS (USPS)

#### UNMATCHED LOCATION & VIEWS

- Closest hotel to the Holy Kaaba
- Direct access to Al-Masjid Al-Haram and the Clock Towers Mall
- Panoramic views of the Kaaba, Haram, and cityscape

#### ROYAL & GOLD FLOORS EXPERIENCE

- Exclusive Royal Floor Suites with up to 720 sqm of space
- Fairmont Gold personalised service, lounge access, and elevated privacy
- Junior and two-bedroom Gold Suites with Haram or Kaaba views

#### DIVERSE DINING DESTINATIONS

- 9 signature restaurants and lounges, including Saudi, Asian, Indian, and Ottoman cuisines
- Panoramic Kaaba-view dining at Al Dira
- 7/24 In-Room Dining with curated international menus

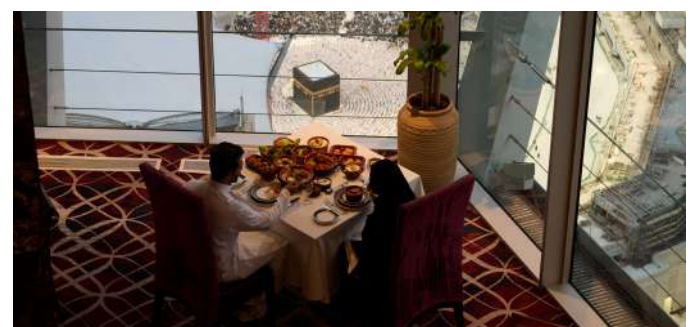
#### WELLNESS & FAMILY BALANCE

- Technogym-equipped health clubs for men and women
- The Fairmont Spa with personalised rituals and therapies
- Dedicated Kids Club for ages 5–13 with supervised activities



#### EVENTS WITH MAJESTY

- Al Jiwar Ballroom: 3,200 sqm pillarless space with capacity up to 3,000 guests
- 7 multi-purpose meeting rooms and a VIP lounge
- First-of-its-kind hydraulic stage in Makkah



HOTEL ORIENTATION & KEY FLOORS

Floor	Description
L1-L2	Main entrance, VIP entrance
GF	Haram level, direct mall access
M1-M4	Health clubs, hotel lobby, main reception, multiple dining outlets
PL, PLM	Al Jiwar Ballroom and meeting rooms
Floor 29	Prayer Area, Al Dira Restaurant
S2	Additional Prayer Area
Floors 25-1	Standard Rooms & Suites
Floors 28-26M	Fairmont Gold Rooms, Lounge, and Reception
Floors 53-30	Residences
Floors 60-56	Royal Floor Suites

ROOM TYPES

TYPES	Description	ROOM LAYOUT	VIEW	CAPACITY
DBACI	Standard Twin Bed Non view	34 sq mtr, Twin Bed, 1 toilet, 3rd bed option	Non view	3 adults
TWD	Classic room Twin Bed City view	34 sq mtr, Twin Bed, 1 toilet, 3rd bed option	City	3 adults
TRD	Classic room Twin Bed Haram view	34 sq mtr, Twin Bed, 1 toilet, 3rd bed option	Haram	3 adults
TWDCI	Classic room Twin bed Partial Kaaba view	34 sq mtr, Twin Bed, 1 toilet, 3rd bed option	Partial Kaaba	3 adults
TWC	Premier Twin Bed Kaaba view	34 sq mtr, Twin Bed, 1 toilet, 3rd bed option	Panoramic Kaaba	3 adults





## SUITE TYPES

TYPES	Description	ROOM LAYOUT	VIEW	CAPACITY
SRD	Junior suite Haram view	75 sq mtr, 1 Bedroom (King Bed), living room, 1 toilet	Haram	3 adults
SKD	Junior suite Kaaba view	75 sq mtr, 1 Bedroom (King Bed), living room, 1 toilet	Kaaba	3 adults
SKE	Junior suite City view	75 sq mtr, 1 Bedroom (King Bed), living room, 1 toilet	City	3 adults
S2BGS	Family Suite City view	94 sq mtr, 1 Bedroom (King Bed), living + dining room, 2 toilets	Partial City	3 adults
STB	Family Suite Haram view	94 sq mtr, 1 Bedroom (King Bed), living + dining room, Haram NS, 2 toilets	Partial Haram	3 adults
S2C	Residential Suite No View	177 sq mtr, 1 Bedroom (King Bed), full suite incl. dressing & dining, 2 bathrooms, 3 entrances	No View	5 adults



## FAIRMONT GOLD ROOMS & SUITES

TYPES	Description	ROOM LAYOUT	VIEW	CAPACITY
DBCGS	Fairmont Gold Twin City View	42 sq mtr, Twin Bed, 1 toilet	City	1+2
DBCOV	Fairmont Gold Twin Haram View	42 sq mtr, Twin Bed, 1 toilet	Haram	1+2
DBAPS	Fairmont Gold Twin Kaaba View	42 sq mtr, Twin Bed, 1 toilet	Kaaba	1+2
SRE	Fairmont Gold Junior Suite City	92 sq mtr, King Bed, living room, 2 toilets	City	1+3
SRP	Fairmont Gold Junior Suite Haram	92 sq mtr, King Bed, living room, 2 toilets	Haram	1+3
SUB	Fairmont Gold Junior Suite Kaaba	92 sq mtr, King Bed, living room, 2 toilets	Kaaba	1+3
SLA	Fairmont Gold 2-Bedroom Suite Kaaba	172 sq mtr, 2 rooms, living + dining + kitchenette, 2 bathrooms	Kaaba	2+4
SIA	Fairmont Gold 2-Bedroom Suite Haram	172 sq mtr, 2 rooms, living + dining, 3 bathrooms	Haram	2+4
SLC	Fairmont Gold Executive Suite City	138 sq mtr, 2 rooms, living, 3 bathrooms	City	2+4

## ROOM FACILITIES

All rooms and suites at Makkah Clock Royal Tower, A Fairmont Hotel are thoughtfully appointed with:

- Flat-screen LCD TV
- Complimentary high-speed Wi-Fi
- Coffee and tea refreshment centre
- In-room speakers
- Full marble bathroom with premium toiletries
- Minibar
- Safety deposit box
- In-suite pantry (available in suites and Gold category)

## FAMILY SERVICES

- Kids Club (Ages 5–13):
  - Group games, supervised care, themed play zones
  - Separate facilities for boys and girls in Ladies' Health Club section
- Special family suite layouts
- In-room entertainment & child-friendly dining menus

## PRAYER AREAS

Dedicated **Prayer Rooms** for **Men** and **Women**

Located on **Floor 29** and **S2**, these serene spaces provide guests with a peaceful environment for prayer within the hotel premises. Designed with spiritual comfort in mind, they offer direct access for convenient worship during peak seasons.

## WELLNESS FACILITIES

- Health Clubs (M1) with state-of-the-art Technogym equipment
- Fairmont Spa: Detoxifying rituals, traditional therapies, and quiet zones
- Ladies-only spaces and family-friendly relaxation options



## DINING OUTLETS

- Al Dira – Authentic Saudi cuisine with panoramic Kaaba view
- Atyaf – All-day dining with international buffet & live stations
- Al Dar – Boutique Lebanese buffet with table service
- Aja – Asian and Indonesian dining with wok & noodle stations
- Mazedar – Indian buffet with tandoori theatre
- Lezzet – Ottoman-inspired gourmet dining
- Mirkaz Café – Artisanal coffee and patisserie lounge
- Mazaq & Mazaq Express – Specialty tea, coffee, and grab-and-go options
- In-Room Dining – 24-hour curated menu service



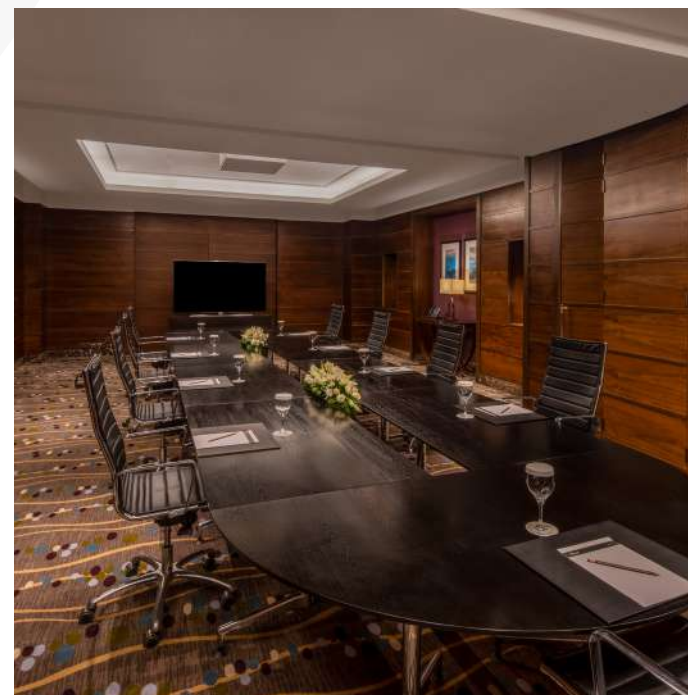
## MEETINGS & WEDDINGS

### MEETINGS

- 7 Meeting Rooms with full AV and support services
- VIP meeting lounge and boardroom
- Business-friendly floor plans for flexibility

### WEDDINGS

- Al Jiwir Ballroom: 3,200 sqm, up to 3,000 guests
- Divisible into 3 smaller venues
- Integrated hydraulic auditorium and stunning décor
- Ideal for high-end destination weddings and religious ceremonies





## ADDITIONAL AMENITIES

- 24-hour front desk and concierge service
- Daily housekeeping and laundry facilities
- Business centre with meeting support
- Technogym-equipped fitness centre
- Full-service spa for men and women
- Kids Club with supervised activities
- Elevator access to all floors
- Rooms and entrances suitable for guests with special needs
- Direct access to Clock Towers Mall and supermarkets
- On-demand 7/24 in-room dining



## HOTEL INFORMATION

- **Hotel Name:** Makkah Clock Royal Tower, A Fairmont Hotel
- **Location:** Clock Towers Complex, Ibrahim Al Khalil Street, Makkah 21955, Saudi Arabia
- **Phone:** +966 (12) 571 7444
- **Email:** makkah@fairmont.com
- **Website:** www.fairmont.com/makkah
- **Accor Website:** www.all.accor.com
- **360 Tour:** Available on the official hotel website
- **Social Media:**

