

The background of the entire slide is a dense, vibrant green foliage of leaves, likely from a plant like lemon balm, which fills the frame with a natural, organic texture.

# LEBELAGE

르베라쥬

Be more beautiful with LEBELAGE and your own beauty

**PRODUCT INTRODUCTION**

**April 2025**

# LEBELAGE, HEEYUL OFFICIAL WEBSITES

Address: [www.lebelage.co.kr](http://www.lebelage.co.kr) (KOR / ENG)



Address: [www.heeyul.co.kr](http://www.heeyul.co.kr) (KOR)



LEBELAGE



HEEYUL

# Information on stores and online shopping malls

**Address** #102,103 Taeseung Apartment, 171, Gukhoe-daero 7-gil, Gangseo-gu, Seoul, Republic of Korea

**Telephone** 02-542-3292

**TIME** Weekdays from 09:00 to 18:00/ Closed on Sat/Sun

**Homepage** [www.lebelage.co.kr](http://www.lebelage.co.kr)  
[www.heeyul.co.kr](http://www.heeyul.co.kr)



# Own OEM Brand Export Status

Dongdonggurimoo is currently exporting its brand LEBELAGE to 20 countries including Russia, Belarus, Ukraine, Myanmar, Turkey, Brazil, Taiwan, Thailand and Vietnam, and is making further efforts to establish itself as a global brand.



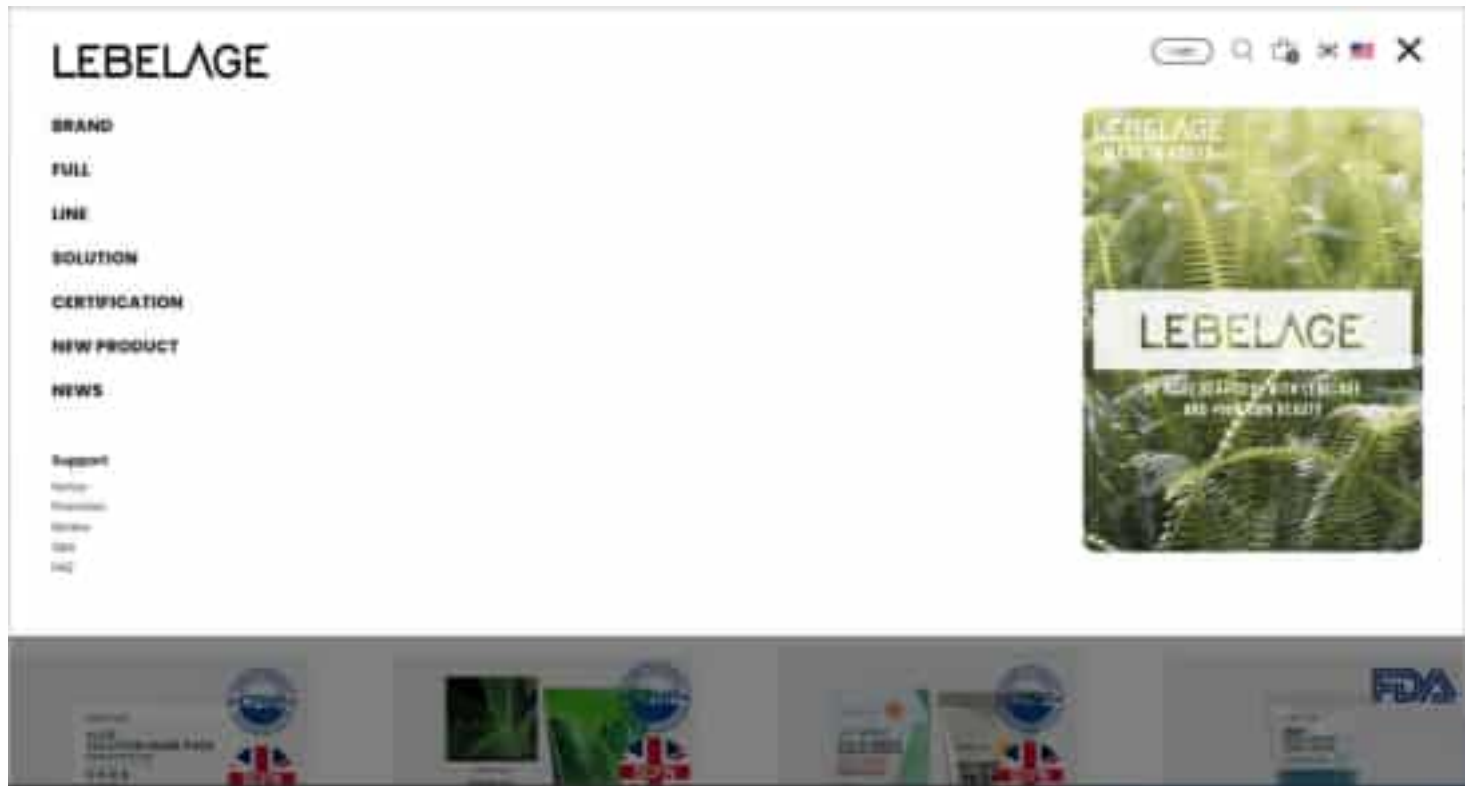


# LEBELAGE Global Certification

Several of our products have been registered with US FDA, European CPNP, UK SCPN, and China NMPA, proving their safety and effectiveness. Please visit our website or contact us for more information.



CHINA NMPA



# LEBELAGE



# Oil\_Free&Matte\_Finish  
# UV\_Protection+Hydration\_All-in\_One!  
# Okay\_Over\_Makeup!

- ◆ This sunscreen stick effectively shields the skin from the sun's harmful rays while delivering a balanced, shine-free matte finish and lasting hydration.
- ◆ Its ease of reapplication over makeup allows for convenient UV protection maintenance throughout the day.

# LEBELAGE

REAL SENSATION BLEMISH AMPOULE(30ml)



REAL SENSATION BLEMISH CREAM(50g)



REAL SENSATION PORE AMPOULE(30ml)



REAL SENSATION PORE CREAM(50g)



- Dual-functional ampoule for brightening and wrinkle improvement, contains niacinamide and adenosine.
- Dual-functional cream helps skin brightening and wrinkle improvement, contains ingredients such as niacinamide and adenosine.

- Ampoule containing anti-sebum P(evening primrose, arrowroot, ulmus bark, pine needle), panthenol and salicylic acid.
- Cream contains patented ingredient for reducing pore size called anti sebum P(evening primrose, arrowroot, ulmus bark, pine needle), along with panthenol and salicylic acid. Helps balance skin's oil and moisture levels, preventing excess sebum and dryness, keeping your skin healthy.

# LEBELAGE

TRULY GLUTATHIONE  
SERUM(35ml)



TRULY RETINOL  
SERUM(35ml)



TRULY CENTELLA  
SERUM(35ml)



TRULY PANTHENOL  
SERUM(35ml)



- Cultivates bright and clear skin and maintains vibrant skin care.
- Helps to regenerate the skin that has become sensitive due to various stimuli.
- Functional cosmetic for wrinkle improvement.

# LEBELAGE

## CICA PROPOLIS MYRRH AMPOULE SET (15ml\*10PCS)



## CICA PROPOLIS MYRRH AMPOULE (15ml)



- Propolis extract helps to gently soothe sensitive skin.
- Centella asiatica extract soothes irritated skin and stabilizes skin with rapid irritation relief and deep moisturization.
- Red ginseng extract and green tea extract help regulate oil-water balance and provide vitality to the skin.

# LEBELAGE

24K GOLD PERFECT AMPOULE  
(50g)



HEEYUL PREMIUM  
GOLD ESSENCE  
(130ml)



HEEYUL PREMIUM GOLD  
ESSENCE MINI 2-SET  
(30ml\*2)



HEEYUL PREMIUM 24K  
GOLD AMPOULE CREAM  
(70ml)



HEEYUL 24K GOLD  
EYE CREAM  
(40ml)



HEEYUL 24K GOLD  
BB CREAM  
(30ml)



HEEYUL 24K GOLD  
FOAM CLEANSING  
(100ml)



HEEYUL 24K GOLD  
PEEL OFF PACK  
(150ml)



HEEYUL PREMIUM  
HANBANG 3-SET  
(30ml\*2, 130ml\*2, 50g)



- Provides excellent nutrition with combination of pure gold and herbal ingredients.
- Brightening and wrinkle improvement at once with double care.
- 99.9% Pure gold and adenosine help to make the skin moist and healthy.

# LEBELAGE

**SUPER WATER DROP  
AMPOULE CREAM**  
(70ml)



**WATERFUL MAYU  
AMPOULE CREAM**  
(70ml)



**WHITE TONEUP  
AMPOULE CREAM**  
(70ml)



**GOLD CAVIAR  
AMPOULE CREAM**  
(70ml)



**WRINKLE COLLAGEN  
AMPOULE CREAM**  
(70ml)



**BLACK SNAIL  
AMPOULE CREAM**  
(70ml)



**NUTRI SALMON  
AMPOULE CREAM**  
(70ml)



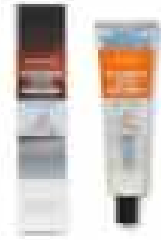
- Ampoule cream effectively improves the appearance of wrinkled skin and promotes a healthy oil-moisture balance.
- Centella asiatica extract is excellent for skin regeneration, anti-inflammation, and wound healing.
- Deeply hydrates and nourishes your skin.

# LEBELAGE

**GOLD CAVIAR  
EYE CREAM EX**  
(40ml)



**WATERFUL MAYU  
EYE CREAM EX**  
(40ml)



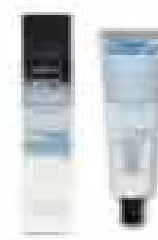
**NUTRI SALMON  
EYE CREAM EX**  
(40ml)



**BLACK SNAIL  
EYE CREAM EX**  
(40ml)



**WHITE TONE UP  
EYE CREAM EX**  
(40ml)



**Dr. HYALURONIC DERMA  
EYE CREAM**  
(40ml)



**Dr. PEPTIDE DERMA  
EYE CREAM**  
(40ml)



**Dr. COLLAGEN DERMA  
EYE CREAM**  
(40ml)



**Dr. SNAIL DERMA  
EYE CREAM**  
(40ml)



- Nourishes and hydrates the delicate skin around the eyes, improving elasticity and reducing the appearance of wrinkles.
- Lightweight, absorbs quickly, and provides a comfortable, non-greasy feel.
- Effective even in small amounts, so it's easy to use and cost-effective.

# LEBELAGE

Dr. CERAMIDE  
CURE CREAM  
(70ml)



Dr. VITAMIN C  
CURE CREAM  
(70ml)



Dr. MADECASSOSIDE  
CURE CREAM  
(70ml)



Dr. PROPOLIS  
CURE CREAM  
(70ml)



Dr. PEPTIDE  
CURE CREAM  
(70ml)



Dr. COLLAGEN  
CURE CREAM  
(70ml)



Dr. CICA  
CURE CREAM  
(70ml)



Dr. SNAIL  
CURE CREAM  
(70ml)



Dr. HYALURONIC  
CURE CREAM  
(70ml)



Dr. AQUA  
CURE CREAM  
(70ml)



- Easy home care.
- Helps keep your skin looking firm and youthful with moisturizing and anti-wrinkle benefits.
- Moisturizing and wrinkle-improving functions help to make skin firmer and youthful.

**Dr. DERMA PEELING TONER**  
(HYALURONIC, CICA, COLLAGEN, PEPTIDE)  
(310ml)



- Toner without 5 harmful ingredients for the skin: parabens, artificial colors, artificial fragrances, animal-derived ingredients, and PEG surfactants; assists in gentle and irritation-free care.
- Can be used as basic toner and can also be applied on a pad for exfoliating the skin and as a hydrating mask.

**PORE PEELING PAD**  
(60pcs)



- Daily exfoliating pad helps reduce skin irritation.
- Embossed cotton removes dead skin cells and residual impurities, while the soft back side smooths the skin texture.

# LEBELAGE

HYALURONIC DERMA SKIN  
(200ml)



Dr. HYALURONIC DERMA LOTION  
(210ml)



HYALURONIC DERMA CREAM  
(50ml)



- Skin and lotion contain 8 types of hyaluronic acid with different molecular weights to help reduce dryness by increasing skin moisture.
- Skin & lotion simultaneously care for both the skin's surface and its inner layers, leaving it soft and hydrated.
- Derma cream helps to heal sensitive and atopic skin.

**Dr. TEA TREE DERMA SKIN**  
(210ml)



**Dr. TEA TREE DERMA LOTION**  
(210ml)



**Dr. TEA TREE DERMA CREAM**  
(50ml)



- **Tea tree ingredient, which is effective of skin soothing, calms skin that has become sensitive due to irritation and external environment.**
- **Soothing and hydrating formula, made with tea tree extract and hyaluronic complex, feels refreshing on your skin.**
- **Hyaluronic acid complex, which contains 8 types of hyaluronic acid in optimal combination, provides moisture to the skin and forms skin moisturizing film to help maintain soft and moist skin.**

# LEBELAGE

COLLAGEN DERMA SKIN  
(200ml)



COLLAGEN DERMA LOTION  
(200ml)



COLLAGEN DERMA CREAM  
(50ml)



- Hydrolyzed collagen reduces the flaking phenomenon that causes dead skin cells due to dryness of the skin and restores elasticity to revitalize dry or damaged skin.
- Penetrates quickly between skin cells and provides moisture to dry skin, making it moist and healthy.

# LEBELAGE

**YUJA DERMA SKIN**  
(200ml)



**YUJA DERMA LOTION**  
(200ml)



**YUJA DERMA CREAM**  
(50ml)



- **Contains citron(yuja) extract, provides vitality and nutrition to help with vital skin care.**
- **Non-sticky formula and rapid absorption make it ideal for convenient use, even in busy daily routine.**

# LEBELAGE

Dr. COLLAGEN  
DERMA AMPOULE  
(30ml)



Dr. VITAMIN C  
DERMA AMPOULE  
(30ml)



Dr. CERAMIDE  
DERMA AMPOULE  
(30ml)



Dr. CICA  
DERMA AMPOULE  
(30ml)



- Functional ampoule designed to improve the appearance of skin wrinkles.
- Helps strengthen your skin's barrier and keeps your skin hydrated.
- Maintains soft and hydrated skin

# LEBELAGE

## 3-ROLLER INTENSIVE CARE BLEMISH CREAM (30ml)



## 3-ROLLER INTENSIVE CARE DARK ZERO CREAM (30ml)



## 3-ROLLER INTENSIVE CARE TROUBLE STOP CREAM (30ml)



- Cream for dark spots and blemishes caused by UV rays and sun exposure brightens up your skin.
- At the last step of your skincare routine, gently roll the roller ball over your face to massage it in and help it absorb.

- Brightens up the dark, dull skin under your eyes.
- Helps add elasticity and vitality.

- Helps soothe the skin and adds elasticity and vitality.
- 3-roller ball deeply penetrates the cream into tired and exhausted areas around your eyes and face while providing a soothing massage effect.

# LEBELAGE

## V LIFTING 5-ROLLER COLLAGEN CREAM (120ml)



- Adds firmness to the lines of your face.
- 5-roller ball smoothly massages while letting the cream soak in deep.
- Helps calm the skin and adds elasticity and vitality.

## LIGHT BODY 5-ROLLER SHAPE CREAM (120ml)



- Adds some bounce to your body's curves.
- Blood circulation improves, and five massage rollers work together with collagen to take care of your skin at the same time.
- Quickly absorbs into the skin without any stickiness and gives a smooth feel upon application.

# LEBELAGE

FRESH GREEN TEA  
FOR MEN SKIN  
(150ml)



FRESH GREEN TEA  
FOR MEN LOTION  
(150ml)



FRESH GREEN TEA  
FOR MEN 2-SET  
(150ml+150ml)



- Skin and lotion with refreshing and hydrating feel to men's skin, which can get tired and worn out from frequent shaving, stress, and environmental pollution.
- Green tea extract helps soothe troubled skin.
- Turns dry, rough skin into firm, healthy skin.
- 2-piece set includes one 150ml skin and one 150ml lotion.

# LEBELAGE

Dr. HOMME FOR MAN  
SKIN(250ml)



Dr. HOMME FOR MAN  
LOTION(250ml)



Dr. HOMME FOR MAN  
3-SET(250ml\*3)



MILD BLACK FOR MAN  
ALL IN ONE(260ml)



- Helps keep your skin hydrated and looking smooth.
- Natural ingredients like centella extract, polygonum cuspidatum root extract, and golden thread extract, so it takes care of your skin without causing any irritation.
- Anti-wrinkle properties help men take care of their wrinkles.
- The Homme for Men set includes 2 skins and 1 lotion.

- All-in-one product combined multiple functions like skin care, lotion, and serum into a single product.
- All-in-one multi-essence gently takes care of rough skin.
- Multifunctional all-in-one essence for wrinkle improvement.

## VITAMIN C PURE 4-SET (TONER, EMULSION, AMPOULE, CREAM) (120ml\*2,35ml,55ml)



## VITAMIN C PURE EYE CREAM (40ml)



- Four products—toner, emulsion, ampoule, and cream—give vitality to delicate skin. 4-piece basic set contains vitamin C to brighten dull skin tone.
- Helps improve blemishes/ melisma, and aids to manage rough skin caused by external stimuli.
- Brightens the skin tone with its exceptional antioxidant effects.

- Pure eye cream replenishes nutrients of vitamin C and rapidly rejuvenating wrinkled skin to cultivate a firm and radiant complexion.
- It is an eye cream with dual functionality for wrinkle improvement and skin brightening.

# LEBELAGE

## CICA MADECASSOSIDE 4 SET (TONER, EMULSION, AMPOULE, CREAM) (120ml\*2,35ml,55ml)



## CICA MADECASSOSIDE EYE CREAM (40ml)



- 4-piece basic set contains Cica and Madecassoside, which rapidly soothes sensitive skin.
- Cica ingredient strengthens the moisture barrier and deeply penetrates into the skin, creating healthy skin form within.
- Helps smooth dry and rough skin with non-sticky texture.
- Eye cream serves as anti-wrinkle functional cream.
- This is an anti-wrinkle functional eye cream.
- This product, formulated with cica and madecassoside, aids in soothing the skin and promoting a brighter complexion.

# LEBELAGE

SNAIL CERAMIDE  
TONER(300ml)



SNAIL CERAMIDE  
EMULSION(300ml)



COLLAGEN HYALURONIC  
TONER(300ml)



COLLAGEN HYALURONIC  
EMULSION(300ml)



SNAIL CERAMIDE  
AMPOULE ESSENCE(500ml)



SNAIL CERAMIDE  
CREAM(100ml)



COLLAGEN HYALURONIC  
AMPOULE ESSENCE(500ml)



COLLAGEN HYALURONIC  
CREAM(100ml)



- Snail mucin filtration and collagen work together to protect sensitive skin and keep it moisturized and elastic.
- Revitalizes skin and protects sensitive skin.

- Hydrolyzed collagen with high protein content helps skin elasticity and works effectively to prevent wrinkles by creating firm skin.
- Contains hydrolyzed collagen and adenosine to provide nutrients and moisture to the skin at the same time.

# LEBELAGE

Dr. COLLAGEN JUMBO  
AMPOULE(250ml)



Dr. SNAIL JUMBO  
AMPOULE(250ml)



Dr. CICA JUMBO  
AMPOULE(250ml)



Dr. VITAMIN JUMBO  
AMPOULE(250ml)



- Helps prevent moisture loss from the skin and attract hydration, promoting a moisturized complexion.
- Dual-action ampoule helps brighten skin and fade dark spots like freckles and blemishes.
- This ampoule helps nourish your skin.
- Helps make smooth skin by calming the sensitive skin to the external environment.

# LEBELAGE

COLLAGEN+GREEN TEA  
MOISTURE SKIN(150ml)

COLLAGEN+GREEN TEA  
MOISTURE LOTION(150ml)

COLLAGEN+GREEN TEA  
MOISTURE MINI  
SKIN/LOTION(30ml)

COLLAGEN+GREEN TEA  
MOISTURE CREAM(70ml)

COLLAGEN+GREEN TEA  
MOISTURE 2-SET  
(150ml\*2,30ml\*2)



- Set includes full-size toner and lotion (150ml each), plus mini versions of the toner and lotion (30ml each).
- Helps prevent skin aging by making elastic cell tissue and keeping skin firm.
- Collagen and green tea ingredients strengthen the skin protection function to make the skin shiny and healthy.

# LEBELAGE

**SUPER AQUA MOISTURE  
SKIN(150ml)**



**SUPER AQUA MOISTURE  
LOTION(150ml)**



**SUPER AQUA MOISTURE  
MINI SKIN/LOTION(30ml)**



**SUPER AQUA MOISTURE  
CREAM(70ml)**



**SUPER AQUA  
MOISTURE 2-SET  
(150ml\*2,30ml\*2)**



- Set includes full-size toner and lotion (150ml each), plus mini versions of the toner and lotion (30ml each).
- Deeply hydrates skin to reduce dryness and keep skin moisturized.
- Contains sodium hyaluronate, natural moisturizing ingredient, to form a moisture barrier and prevents evaporation of moisture, helping to keep the skin moisturized.

# LEBELAGE

CENTELLA MOISTURE  
SKIN(150ml)



CENTELLA MOISTURE  
LOTION(150ml)



CENTELLA MOISTURE  
CREAM(70ml)



CENTELLA MOISTURE  
2-SET(150ml\*2,30ml\*2)



- Set includes full-size toner and lotion (150ml each), plus mini versions of the toner and lotion (30ml each).
- Centella skin is a product that gently cares for the skin and prepares it before using cosmetics.
- Keeps your skin hydrated and protected, preventing dryness and leaving it feeling soft and smooth.
- Contains centella asiatica extract, which is rich in asiaticoside and madecassic acid, ingredients effective for soothing the skin, helping to promote healthy and smooth skin.

# LEBELAGE



**DAILY MOISTURIZING HAND CREAM**  
(OLIVE, GREEN TEA, PEACH, COLLAGEN, SNAIL)  
(100ml)



**MOISTURIZING HAND CREAM**  
(AQUA, AVOCADO, HONEY, PEARL)  
(100ml)



**WATERFUL HAND CREAM**  
(STRAWBERRY, MANGO, BANANA, VITAMIN, CICA, GRAPEFRUIT)  
(100ml)



**WRINKLE CARE MAGIC  
HAND CREAM**  
(100ml)



**WRINKLE CARE MAGIC  
HAND CREAM 1+1**  
(100ml\*2)



- Non-stick cream keeps dry and rough hands hydrated with excellent moisturizing power.
- Hand cream keeps your hands moisturized and absorbs quickly

# LEBELAGE

## DAILY MOISTURIZING FOOT CREAM(100ml) (OLIVE, COLLAGEN, VITAMIN)



## DAILY MOISTURIZING HAND & FOOT CREAM(100ml\*2) (OLIVE)



- Quick absorption without any stickiness.
- Provides sufficient moisturizing power and care for both hands and feet while resting.
- Olive extract helps keep the dry skin on your hands and feet moisturized with fresh scent and intense hydration.
- 2-piece set includes 100ml of hand cream and 100ml of foot cream.

# LEBELAGE

CICA AQUA  
SUN(30ml)



CICA LEPORTS  
SUN(30ml)



CICA DAILY  
SUN(30ml)



HIGH PROTECTION  
LONG LASTING  
SUN CREAM(30ml)



HIGH PROTECTION  
DAILY NO SEBUM  
SUN CREAM(30ml)



HIGH PROTECTION  
EXTREME  
SUN CREAM(30ml)



COLLAGEN HYALURONIC  
SUN CREAM(50ml)



MOISTURE ALOE  
SUN CREAM(50ml)



ANTI WRINKLE GOLD  
SNAIL SUN CREAM(50ml)



PERFECT CARE  
NATURAL TONE UP  
SUN(50g)



PERFECT CARE  
MOISTURE AQUA  
SUN(50g)



PERFECT CARE  
CICA SOOTHING  
SUN(50g)



- Protects skin from UV rays and sunlight, helping to prevent dark spots, freckles, and other skin damages.
- Minimal white cast provides soft, powdery, and smooth finish.

# LEBELAGE

**COLLAGEN MULTI SUN  
BALM(10g)**



**VITAMIN MULTI SUN  
BALM(10g)**



**CICA MULTI SUN  
BALM(10g)**



- **Multi sun balm is stick-type products that offer a more convenient application compared to conventional sunscreens.**
- **Dual-functional cosmetic product for brightening and wrinkle improvement.**
- **Multi sun balm can be gently applied as needed to dry or wrinkle-prone areas.**
- **Can be applied over makeup and provides a glowing finish.**

# LEBELAGE

UV SUN PROTECT  
SUN STICK(18g)



UV SUN OIL FREE MATTE  
SUN STICK(23g)



- The stick works by rotating the entire bottom of the product instead of using a roller; convenient sun stick to use anytime and anywhere.
- UV Sun Protect Sun Stick provides refreshing UV protection to safeguard your skin.
- Effectively shields the skin from the sun's harmful rays, providing both a matte, shine-free finish by controlling excess sebum, and lasting hydration.
- Effortless reapplication, even over makeup, facilitating convenient and consistent sun protection while on the go.

# LEBELAGE

Dr. 24K GOLD HYDROGEL  
EYE PATCH(90g/60pcs)



Dr. COLLAGEN HYDROGEL  
EYE PATCH(90g/60pcs)



Dr. VITAMIN HYDROGEL  
EYE PATCH(90g/60pcs)



Dr. CICA HYDROGEL  
EYE PATCH(90g/60pcs)



- Eye patch is easy to use, and adheres to the skin for excellent absorption.
- Nutrient care for not only around the eyes, but also around the mouth and cheeks.
- Formulated with various ingredients that reduce skin irritation and alleviate fatigue and dryness around the eyes.

# LEBELAGE

## SOLUTION MASK PACK(25g)

(Q-10, CICA, SNAIL, AQUA, CUCUMBER, PEARL, HYALURONIC COLLAGEN, RED GINSENG, GREEN TEA, VITAMIN, POMEGRANATE, ALOE, CHARCOAL, PROPOLIS, MADECASSOSIDE)



## FRUIT ESSENCE MASK PACK(25ml)

(TOMATO, STRAWBERRY, GRAPEFRUIT, COCONUT, BLUEBERRY, LYCHEE, OLIVE, PEACH, YUJA, SHINEMUSCAT, MANGO, AVOCADO)



- Quick and easy daily care routine.
- Gentle care without irritation to the skin by using high-density rayon sheet.
- Helps to keep skin healthy and moist with rich moisturizing power.

# LEBELAGE

**CAPSULE AQUA  
MASK PACK(28ml)**



**CAPSULE CICA  
MASK PACK(28ml)**



**CAPSULE VITAMIN  
MASK PACK(28ml)**



**CAPSULE COLLAGEN  
MASK PACK(28ml)**



**CAPSULE CICA & AQUA 2X  
MASK PACK(28ml)**



**CAPSULE VITAMIN & CENTELLA 2X  
MASK PACK(28ml)**



**CAPSULE COLLAGEN & HYALURONIC 2X  
MASK PACK(28ml)**



- Cellulose-based sheet with high adhesion, stays moist even on curved surfaces.
- Contains high concentration of essence, making it suitable for use not only on the face but also on dry areas such as the neck, legs, and arms.
- Dual-function mask pack that offers brightening and wrinkle improvement.

# LEBELAGE

**TRULY COLLAGEN AMPOULE  
MASK PACK(28ml\*20pcs)**



**TRULY RETINOL AMPOULE  
MASK PACK(28ml\*20pcs)**



**EVERYDAY VITAMIN  
MASK PACK  
(400g/30pcs)**



**EVERYDAY CICA  
MASK PACK  
(400g/30pcs)**



**EVERYDAY AQUA  
MASK PACK  
(400g/30pcs)**



**EVERYDAY COLLAGEN  
MASK PACK  
(400g/30pcs)**



- **Functional mask pack loaded with collagen or retinol that helps improve skin texture and reduce wrinkles.**
- **Sheets made from cellulose fabric let your skin breathe even if you wear them for long time, so they're really comfortable.**

- **Pack of 30 masks that you can use every day without any hassle.**
- **Made from cellulose fabric, which has strong adhesive, so even the curved areas stay nice and moist.**
- **Packed with essence, so you can use it not just on your face, but also on dry areas like your neck, legs, and arms.**

# LEBELAGE

CICA DERMA SPOT PATCH(40pcs)



VITAMIN PEELING FOOT PACK(40ml)



VITAMIN ESSENCE HAND PACK(40ml)



- Disposable spot patch made with hydrocolloid adhesive sheet that helps absorb secretions from wounds and affected areas.
- The peeling foot pack removes dead skin buildup on the feet, keeping them healthy and feeling refreshed.
- The hand pack, enriched with rich vitamin tree fruit extracts, helps transform dry and rough hands into soft and moisturized ones.

# LEBELAGE

GLUTATHIONE BUBBLE  
CHEWY FOAM(200ml)



RETINOL BUBBLE  
CHEWY FOAM(200ml)



CENTELLA BUBBLE  
CHEWY FOAM(200ml)



PANTHENOL BUBBLE  
CHEWY FOAM(200ml)



- The bubble foam series provides a gentle cleanse with its rich, elastic lather and comes in four types: Glutathione, Retinol, Centella, and Panthenol.
- Maintains clear and bright skin even after washing.
- Built-in brush provides deeper cleansing, providing skin care that is significantly superior to conventional cleansing foams.

# LEBELAGE

## REAL SENSATION PORE CLEANSING FOAM 1+1 (150ml+150ml)



## REAL SENSATION BLEMISH CLEANSING FOAM 1+1 (150ml+150ml)



## RICE CLEANSING FOAM 1+1 (100ml+100ml)



- 1+1 Foam Cleanser Budget-Friendly Package
- Helps to moisturize and soften the skin.
- Foam cleansing product with refreshing feel that removes skin wastes and dead skin cells, thoroughly removes wastes in pores.

# LEBELAGE

## CLEANSING FOAM

(LEMON BRIGHTNING, GREEN TEA BALANCING, AVOCADO REVITAL, SNAIL REVITAL, ALOE SOOTHING, AQUA WATERFUL, CHARCOAL PORE CLAY, BROWN RICE CLEANING, COLLAGEN REGENERATION)  
(180ml)



## CLEANSING FOAM

(ALOE, GREEN TEA, COLLAGEN, SNAIL, CHARCOAL, CICA, RICE, CUCUMBER, AQUA)  
(100ml)



## FRUIT CLEANSING FOAM

(AVOCADO & OLIVE, PEACH & APPLE MANGO, LEMON & CALAMANSI)  
(100ml)



- Easy tube type.
- Soft and rich foam leaves moisture on the skin while effectively cleansing away impurities without causing any irritation.

# LEBELAGE

**CICA DERMA  
CLEANSING WATER**  
(300ml)



**VITAMIN DERMA  
CLEANSING WATER**  
(300ml)



**CENTELLA DERMA  
CLEANSING WATER**  
(300ml)



**COLLAGEN DERMA  
CLEANSING WATER**  
(300ml)



**PEPTIDE DERMA  
CLEANSING WATER**  
(300ml)



- **Cleansing water is a skincare product that gently removes makeup and impurities while hydrating and nourishing your skin.**
- **You can also use it anytime during the day to freshen up your skin.**
- **Doesn't contain any harsh cleansing agents, risk of skin irritation and dryness is low.**
- **Comes in five types to choose from based on your skin type and concerns: Cica, Vitamin, Centella, Collagen, and Peptide.**

# LEBELAGE

**BLACK SNAIL PEELING GEL**  
(180ml)



**LEMON DETOX PEELING GEL**  
(180ml)



**COLLAGEN PEELING GEL**  
(180ml)



- Peeling gel keeps your skin clean and smooth by gently removing dead skin cells and promoting cell renewal.
- Regular use helps improve skin texture and enhances absorption of skincare products.
- It comes in three types: Black Snail, Lemon, and Collagen.

# LEBELAGE

## JEJU VOLCANIC SUPER CLAY PORE MASK 2X(120g)



## BLACK SUGAR SCRUB WASH OFF PACK(100ml)



- Deep cleansing mask will leave your skin feeling clean and smooth.
- Contains volcanic ash and super clay components from Jeju's pristine nature, effectively removing impurities and excess sebum from deep within the pores.
- Soothes the skin and provide moisturizing effects, maintaining clean and hydrated skin.
- The scrub gently exfoliates dead skin cells with black sugar granules while simultaneously nourishing and moisturizing the skin.
- Cleanses pores and creates smooth, glowing skin.
- Can be used not only on the face but also on the body, hands, and other areas, making it excellent for daily care.

# LEBELAGE

**WATER DROP VITAMIN  
SLEEPING PACK(100ml)**



**WATER DROP CICA  
SLEEPING PACK(100ml)**



**WATER DROP AQUA  
SLEEPING PACK(100ml)**



**WATER DROP COLLAGEN  
SLEEPING PACK(100ml)**



**WATER DROP PEPTIDE  
SLEEPING PACK(100ml)**



**WATER DROP VITAMIN  
BABY SLEEPING PACK(8g)**



**WATER DROP CICA  
BABY SLEEPING PACK(8g)**



**WATER DROP AQUA  
BABY SLEEPING PACK(8g)**



**WATER DROP COLLAGEN  
BABY SLEEPING PACK(8g)**



**WATER DROP PEPTIDE  
BABY SLEEPING PACK(8g)**



- A sleeping pack designed to hydrate and nourish the skin overnight.
- Use at night to relax and hydrate the skin, helping to create bright and vibrant complexion
- Comes in five types to choose from based on your skin type and concerns: Vitamin, Cica, Aqua, Collagen, and Peptide.
- Water Drop Little Baby Sleeping Pack is portable and convenient to use on the go.

# LEBELAGE

**Dr. DERMA ORANGE  
BB CREAM  
(30ml)**

**Dr. DERMA HOT PINK  
BB CREAM  
(30ml)**

**Dr. DERMA GOLD  
BB CREAM  
(30ml)**

**REAL SENSATION  
PINK TONE UP CREAM  
(100ml)**



- **Moisturizing and nutrient-rich formula seamlessly covers imperfections.**
- **After basic skincare, take an appropriate amount of the BB Cream and spread it evenly.**
- **Easy to carry, so it can be conveniently put in a bag and apply frequently to protect the skin.**

- **Vibrant pink tone-up cream with moist texture and clear glow.**
- **Provides natural tone-up.**
- **Lightly absorbs into skin without stickiness.**

# LEBELAGE

**COLLAGEN NO SEBUM FOUNDATION**  
[No.13 LIGHT BEIGE]  
(100ml & 15ml)



**COLLAGEN NO SEBUM FOUNDATION**  
[No.21 NATURAL BEIGE]  
(100ml & 15ml)



**COLLAGEN NO SEBUM FOUNDATION**  
[No.23 SAND BEIGE]  
(100ml & 15ml)



- Covers spots and blemishes in wide area with soft and moist application.
- Collagen ingredient provides skin hydration.
- Three distinct formulations are available to accommodate varying skin types and desired levels of coverage.
- Compact size of the mini foundation allows for swift touch-ups while on the go.

# LEBELAGE

## ALL COVER CUSHION [NO.13 LIGHT BEIGE, 21 NATURAL BEIGE, 23 SAND BEIGE] (15g)



## CICA NO SEBUM SUN CUSHION (15g)



## CICA NO SEBUM POWDER (5g)



- Triple-functional cover cushion provides brightening, anti-wrinkle, and sun protection benefits.
- Cushion's lightweight texture allows for smooth application, leaving the skin feeling soft and hydrated.
- Offers three textures to provide customizable coverage for various skin types.
- Cica No Sebum Sun Cushion is suitable even for individuals with sensitive and dry skin, provides long-lasting effects.
- The sebum control powder helps absorb excess oil and reduces shine.

# LEBELAGE

## AUTO EYEBROW SOFT TYPE (BLACK, BROWN, GRAYISH, DRAK BROWN, GRAY)



- Possible to create neat and delicate eyebrows one by one by raising the angle.
- Easy to use with the screw brush on the back for easy eyebrow grooming and smooth application.

## WATER PROOF VOLUME & LONG LASHES MASCARA (7ml)



- Volume & Long lash formula maintains coating effect, creating volumized lashes and striking eye look that lasts all day.
- Curling and Long lash formula provides long-lasting curl and enhances lash volume.

## WATER PROOF CURLING & LONG LASHES MASCARA (7ml)



## WATER PROOF TATTOO PEN EYE LINER (0.8g)



- Achieve defined and long-lasting eyeliner look with our easy-to-use, quick-drying, and smudge-proof pen eyeliner.

# LEBELAGE

## KISS & TENSION LIP STICK

[NO.701 PEACH PINK, 702 ROSE PINK, 703 PURE CORAL, 704 REAL CORAL, 705 VERY RED, 706 VELVET PINK, 707 MOOD BEIGE]  
(3.5g)



## DEEP KISS VOLUME LIP GLOSS

[NO.301, 302, 303, 304, 305]  
(1.4g)



## DEEP KISS FIXING LIP TINT

[NO.201, 202, 203, 204, 205, 206, 207]  
(1.4g)



- Lip stick glides smoothly and accentuates and moisturizes the lips.
- Lip gloss turns dry lips into clear, glossy, voluminous lips for a long time.
- Lip tint offers remarkable staying power from water, food, and rubbing, making them ideal for both everyday makeup and special occasions.

# LEBELAGE

GLOW COLOR LIP BALM  
[NO.101 ESSENTIAL]  
(3.6g)



GLOW COLOR LIP BALM  
[NO.102 SMOOTHIE PINK]  
(3.6g)



GLOW COLOR LIP BALM  
[NO.103 RASPBERRY]  
(3.6g)



GLOW COLOR LIP BALM  
[NO.104 ROSEWOOD]  
(3.6g)



ESSENTIAL MOISTURE LIP BALM  
(3.8g)



- **Highly moisturizing lip balm provides natural shine and long-lasting hydration to protect chapped lips.**
- **Helps provide deep moisture to dry lips.**
- **Protects skin without irritation and helps keep lips moist.**

# LEBELAGE

## NATURAL PERFUME

(01.HUGO WOMAN, 02.TOMMY GIRL, 03.BURBERRY GIRL, 04.COOL WATER, 05.CHANEL COCO, 06.BABY POWDER)  
(15ml)



- No resistance with its natural scent.
- Portable size, can be carried in a bag and used at any time.
- Pleasant scent lasts for long time.

# LEBELAGE

**DEEP SNAIL CERAMIDE  
FACIAL MIST**  
(120ml)



**DEEP CICA  
FACIAL MIST**  
(120ml)



**DEEP COLLAGEN  
HYALURONIC FACIAL MIST**  
(120ml)



- Facial mist makes tired and dry skin soft and moist.
- Fine spray provides sufficient moisture without smudging when sprayed after makeup.
- 3 types to choose from: Snail, Cica, and Collagen

# LEBELAGE

Dr. SOLUTION LOW PH 5.5  
SCALP SHAMPOO  
(300ml)



Dr. SOLUTION  
DAMAGE CARE SHAMPOO  
(300ml)



Dr. SOLUTION BABY POWDER  
PERFUME SHAMPOO  
(300ml)



Dr. SOLUTION WHITE MUSK  
PERFUME SHAMPOO  
(300ml)



- Functional shampoo relieves hair damage and cares for tired scalp.
- Soft and rich foam removes dead skin cells to care for the scalp.
- Improves the scalp health, nourish damaged hair, revitalize fatigued scalp, and promote soft, manageable hair.
- Offers gentle and subtle experience, leaving delicate fragrance that lasts throughout the day.

# LEBELAGE

**AQUA COOL HAIR  
SHAMPOO & RINSE 2IN1  
(1000ml)**



**KERATIN HAIR SHAMPOO  
(1000ml)**



**KERATIN HAIR RINSE  
(1000ml)**



- **AQUA COOL HAIR** shampoo & rinse is 2-in-1 shampoo & conditioner makes hair resilient with rich foam, and pleasant coolness continues even after use.
- **KERATIN HAIR** shampoo/rinse manage smooth hair with subtle yet pleasant scent that lasts for long time.

# LEBELAGE

PERFECT REPAIR SHAMPOO(500g,1000g)  
PERFECT REPAIR SERUM TREATMENT(150ml)  
PERFECT REPAIR HAIR SERUM(100ml)

DAMAGE CARE SHAMPOO(500g,1000g)  
DAMAGE CARE TREATMENT(150ml)  
DAMAGE CARE HAIR ARGAN SERUM(100ml)



- Shampoo helps to protect against heat damage caused by drying, nourishes up to the split and frizzy ends of the hair, and helps restore to shiny hair texture.
- Serum makes hair soft and shiny, helping enjoy more beautiful styles.
- Perfect Repair Line - Provides nourishment to hair for gentle care.
- Damage Care Line - Great for damaged and colored hair care.

# LEBELAGE

## FRUIT BODY CLEANSER(1000ml)

AVOCADO & OLIVE PEACH & APPLE MANGO LEMON & CALAMANSI



## FRUIT BODY LOTION(1000ml)

AVOCADO & OLIVE PEACH & APPLE MANGO LEMON & CALAMANSI



## BODY PEELING(300ml) (COTTON, PEACH)



## BRIGHTENING IN SHOWER BODY TONE UP CREAM(200g)



- Body lotion maintains moisture levels to prevent dryness.
- Body cleanser effectively removes dead skin cells and impurities from pores with its rich lather.

- Body peeling spray gently exfoliates and removes dead skin cells, leaving your skin feeling clean and refreshed.
- Body tone-up cream features a smooth, lotion-like texture, offering simultaneous moisturization and skin tone enhancement during shower. It's an ideal addition to busy routine.

# LEBELAGE

**MOISTURE SOOTHING GEL(300ml)**  
(CUCUMBER, VITAMIN, HONEY, SNAIL,  
COLLAGEN, CHARCOAL, AVOCADO, ALOE, CICA)

**MOISTURE PURITY 100% SOOTHING GEL(100ml)**  
(CHARCOAL, VITAMIN, CICA, COLLAGEN, ALOE)



- All-in-one product can be applied frequently without feeling sticky, suitable for use on the entire body, including the face, body, and legs.
- Absorbs quickly and goes on smooth, even on dry skin.
- Helps soothe your skin.

- Convenient tube design, suitable for application all over the body without any stickiness.
- Helps moisturize and firm dry skin, and quickly absorbed into the skin for refreshing sensation.

# LEBELAGE

**COTTON BEAUTY**  
(100pcs)



**COTTON BEAUTY (EMBOSSING)**  
(100pcs)



**NATURAL OIL CONTROL PAPER**  
(50pcs)



- **100% cotton has dense texture and significant thickness, ensuring excellent moisture absorption.**
- **With pure cotton, remove make-up without irritation to the skin.**
- **Embossed surface effectively cleanses pores during cleansing, while the skin application deeply hydrates the skin.**
- **Absorbs excess sebum while preserving the skin's natural moisture, helping to maintain a balanced oil-water level.**
- **Helps balance the skin's oil and moisture levels to prevent breakouts.**

# Thank you

† LEBELAGE by DONGDONGGURIMOO Co., Ltd.

† Email : [lebelage@lebelage.co.kr](mailto:lebelage@lebelage.co.kr) (Korean / English / Chinese / Russian Available)

† Phone : +82-2-542-3292 Fax : +82-2-542-3647

† Phone : +82-10-7166-4566 (MANAGER JOO)



# WELCOME INQUIRIES!



Please feel free to contact us via your preferred method. We are available on WhatsApp, KakaoTalk, WeChat, and Telegram.

Consultations are offered in Korean, Russian, English, and Chinese.^^



[+82 10-3364-3292](tel:+821033643292)



ID : dongdong3292  
ID : ddcos3292



[@dongdonggurimoo](https://www.instagram.com/dongdonggurimoo)



ID : dongdong3292



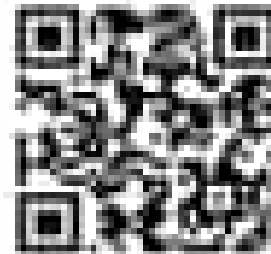
[sales@lebelage.co.kr](mailto:sales@lebelage.co.kr)  
[lebelage@lebelage.co.kr](mailto:lebelage@lebelage.co.kr)

Check out our website and Instagram for more info!!



[@lebelage\\_korea](https://www.instagram.com/lebelage_korea)

[www.lebelage.co.k](http://www.lebelage.co.k)



[www.heeyul.co.kr](http://www.heeyul.co.kr)

