



Professional Clean Energy Service Provider

Maanshan Kinse Energy Technology Co.LTD

Maanshan Kinse Energy Technology Co.LTD

Tel: 0555-2581308

E-mail: info@kinse-solar.com

Website: www.kinse-solar.com

Add: No.9, Industrial Zone , Tagang Administrative Village, Tongzha Town,
Hanshan County, Maanshan City, Anhui Province, China





Environmental Protection



Economical Saving



Professional Design



Efficient Installation



Reliable Quality



Technical Support

ENTERPRISE PROFILE

Maanshan Kinse Energy Technology Co. Ltd. is located next to Taihu Mountain National Forest in Hanshan County, Maanshan City, 5 km from Railway Station, covering an area of about 50 acres of standardized production plants. Kinse Energy is the key enterprise among Maanshan City New Energy Intelligent Manufacturing Projects, with independent import and export rights, the latest automated production lines, annual production capacity of 1GW photovoltaic modules. The main production including 182 series, 210 series high-efficiency photovoltaic modules.

Mission

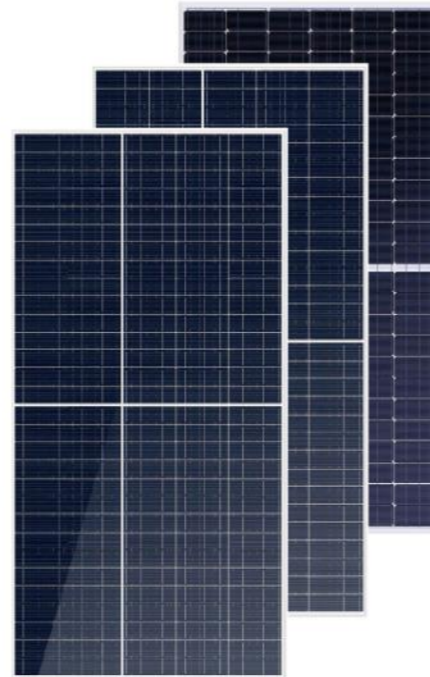
Provide clean energy and excellent services, Improve social energy consumption structure, Promote photovoltaic green future.

Vision

To be a trustworthy PV company by continuous innovation and excellent management.

BIG-SIZE MONOCRYSTALLINE HIGH-EFFICIENCY MODULES

KS***-144-M182
KS***-132-M182
KS***-120-M182
KS***-108-M182
KS***-132-M210
KS***-120-M210



Lower Current Mismatch

Effectively reduce the hot spot effect, reduce the power loss caused by shadow shading, cell decay asynchrony, etc.



Excellent Low Light Performance

Excellent cell surface linting technology ensures excellent module performance in low light conditions.



Anti-PID Feature

Anti-PID test conditions minimize the chance of power degradation caused by PID



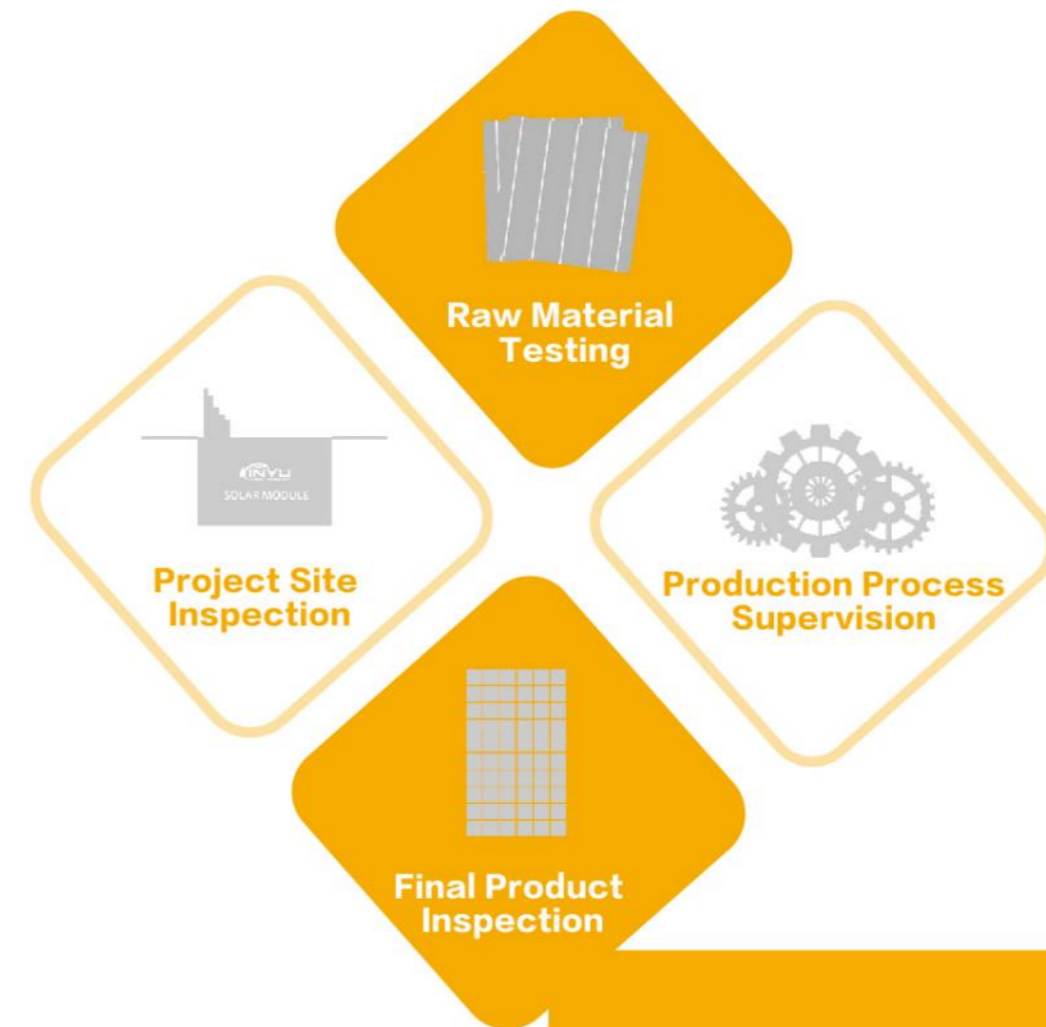
Mechanical Properties

Certified for mechanical performance testing of wind (2400 Pa) and snow (5400 Pa) components



Adaptable Harsh Environment

By high salt spray and high ammonia corrosion tests, suitable for offshore and agricultural and livestock installation environment

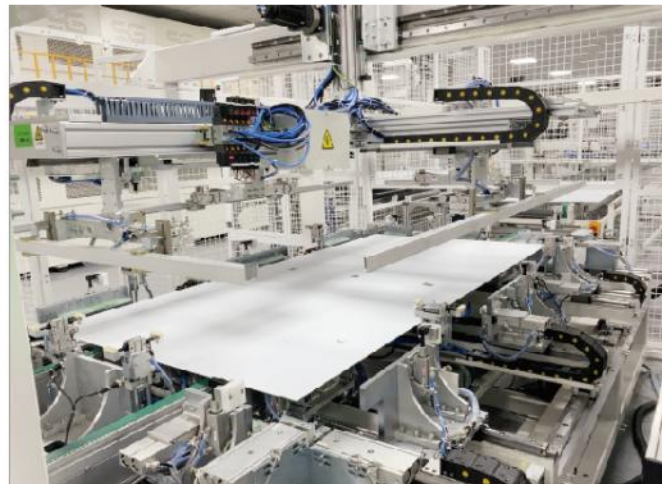


Module Product Quality Control

Kinse Energy follows the quality management policy of "Providing customers with high quality products and professional services is the key of enterprise survival", and cooperates with leading domestic PV testing institutions for a long period of time and achieves the whole process of testing and control of PV modules from raw materials to production process, to final products leaving the factory, and then to the whole production cycle after delivery to the field, in order to ensure that each PV module of Kinse Energy maintains stable photovoltaic conversion efficiency during its 30-year life cycle, and the product safety, reliability and environmental protection are fully guaranteed, which is highly recognized by customers.

STANDARDIZED PRODUCTION LINE

The Automatic Machines : cell string soldering machine, layout machine, module laminating machine, trimming machine, framing machine, curing room, etc.



THE PROCESS

1. Cell Soldering
2. Strings Soldering
3. Module Layout
4. Pre- Lamination EL
5. Lamination
6. Framing
7. Curing
8. Insulation Resistance Test
9. Power Test
10. Final Product EL Test
11. Packaging



PHOTOVOLTAIC



Kinse Energy has started the development and construction of photovoltaic power plants and invested in rooftop distributed power plants in various forms such as EPC, BT and self-sustaining, and has reached strategic cooperation with many provincial energy groups, provincial design institutes and financial institutions. We have deepened cooperation with leading companies in the industry such as Far Eastern Cable and Huawei to build a complete and efficient supply chain system.

Kinse Energy delivered over 1,200 MW of modules to customers all over the world, and developed and built 500 MW of PV plants.



SOLUTIONS



Industrial Solutions

We provide contract energy management services for industrial and commercial enterprises to enjoy preferential electricity tariffs lower than those of the national grid and save business operating costs, and also provide consulting planning and we also provide one-stop standardized services for consulting, planning, design and construction, intelligent operation and maintenance, and provide value-added services such as customized power plant insurance, financing lease and power generation preservation according to customers' needs.

Residential Solutions

A small photovoltaic power generation system is a special design for different roofs. It converts solar energy into electricity through photovoltaic modules and directly converts DC power into AC power through on-grid inverters without storing batteries, and the electricity from projects can be directly used by users and the left electricity is connected to the National Grid for sale.



Land Plants Solutions

The types of land photovoltaic power plant projects cover various application scenarios such as agriculture-photovoltaic complementary, livestock-photovoltaic complementary, etc. Through strong technical research and rich experience in system integration and perfect intelligent operation and maintenance system, we can significantly improve the return on investment of photovoltaic power plants and create greater value for customers.



Water Plants Solutions

For any water bodies such as ponds, lakes, reservoirs and fish ponds, we can adopt different solutions such as high price type and floating type to inhibit the growth of cyanobacteria and they can help improve water quality at the same time, and we can also combine with fishery farming for comprehensive development to form a power generation mode of "Power generation on top and fish farming on the bottom". This mode realizes the increase of fishery production and energy saving and emission reduction.





**Baochanshan Economic Park
Rooftop Project**

Total Investment: 120 Million RMB

The First Large Rooftop Project in Hanshan County.

Location: Economic Park "Maanshan City Green
Installations Environmental Protection New Materials
Industrial Park"
Roof Size: 175,000 Square Meters

Installed Capacity: 15MW
Annual Power Generation Capacity: 16.8 Million Kwh
Annual Replaced Standard Coal: 5376 Tons
Annual CO₂ Emission Reduction : 16,632 Tons
Annual Soot Emission Reduction : 4536 Tons



**Yuncao Township, Hanshan
Fishery Project**

Total Investment : 340 Million RMB

**The First Fishery Photovoltaic Power Plant in
Maanshan City**
Water Area : 1030 Acres

Installed Capacity: 30MW
Annual Power Generation Capacity: 34.5 Million Kwh
Annual Replaced Standard Coal: 11040 Tons
Annual CO₂ Emission Reduction: 34155 Tons
Annual Soot Emission Reduction: 9315 Tons



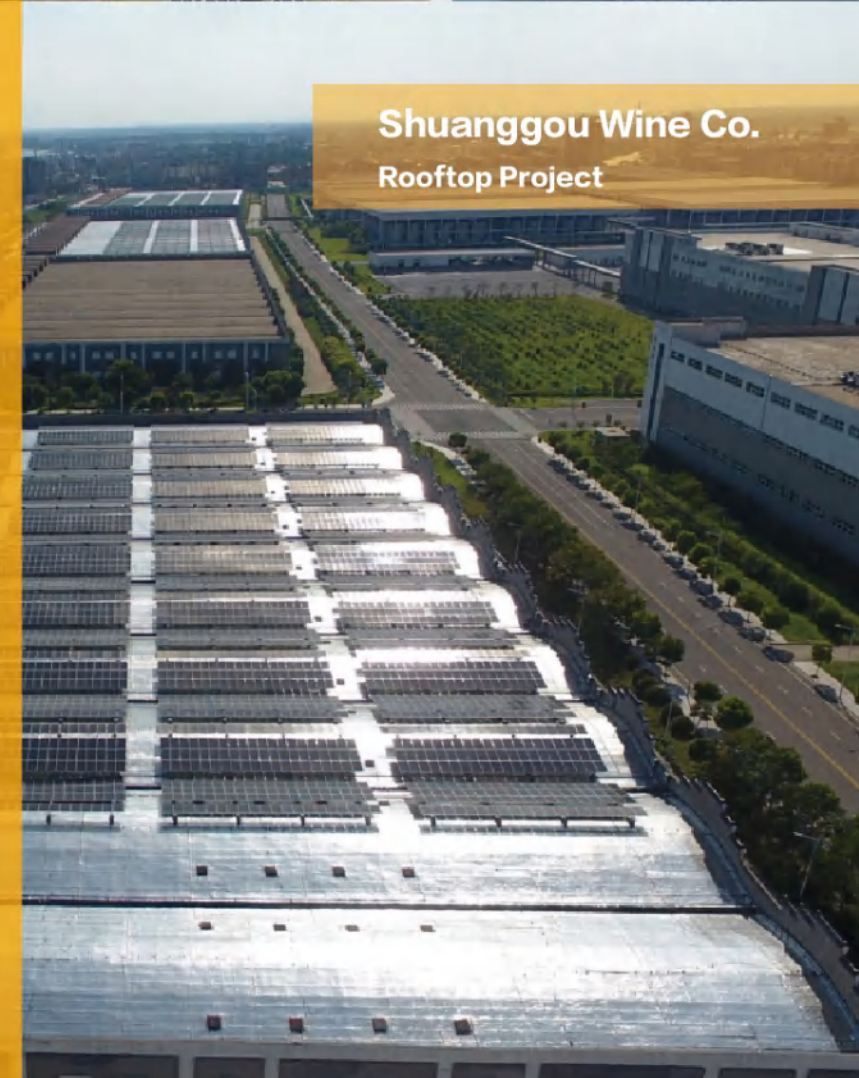
Total Investment : 6 Million RMB

Installed Capacity: 1.14MW
Annual Power Generation Capacity: 1.2 Million Kwh
Annual Replaced Standard Coal: 384 Tons
Annual CO₂ Emission Reduction: 1188 Tons
Annual Soot Emission Reduction: 324 Tons

**Yangzhou West Station
Rooftop Project**

Total Investment: 22 Million RMB

Installed Capacity: 4.75MW
Annual Power Generation Capacity: 5.225 Million Kwh
Annual Replaced Standard Coal: 1672 Tons
Annual CO₂ Emission Reduction: 5172.75 Tons
Annual Soot Emission Reduction: 1410.75 Tons



**Shuanggou Wine Co.
Rooftop Project**

④ 扬州汽车客运站