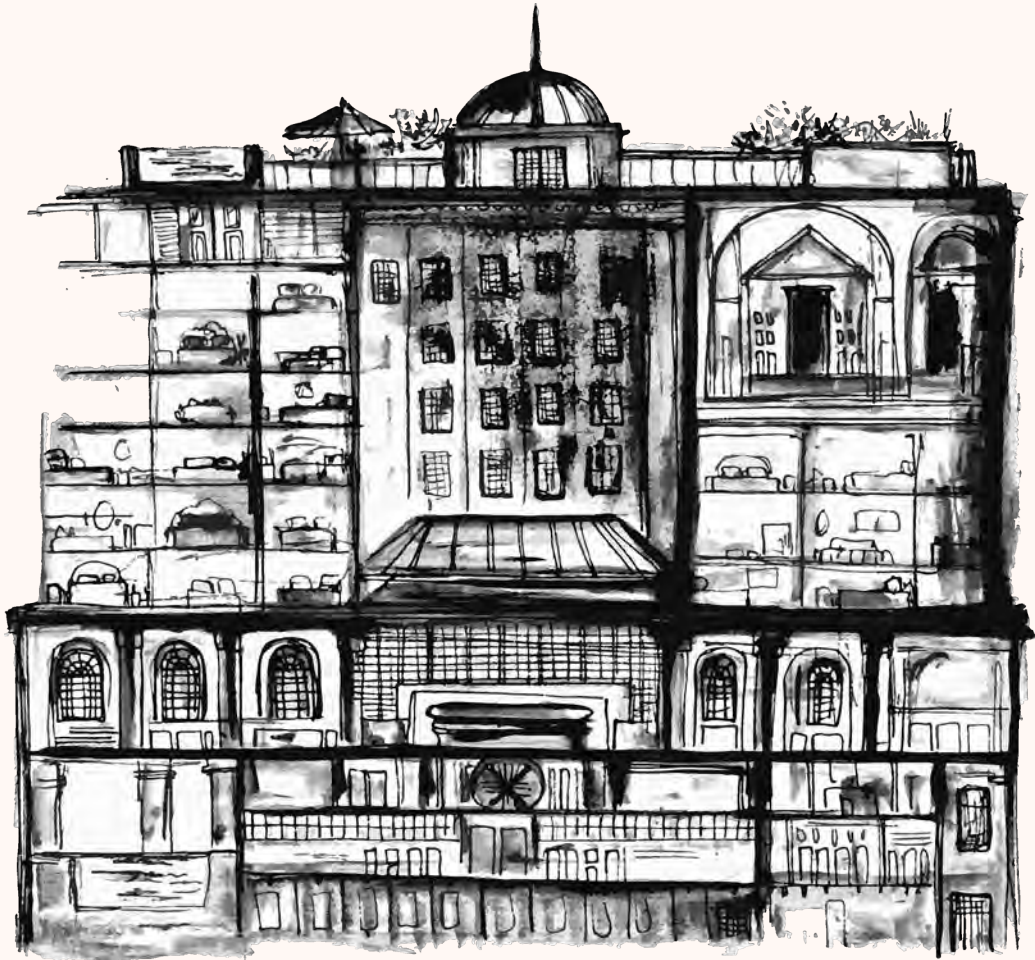




THE NED

CITY OF LONDON



- *Created in 2017, The Ned is situated in the heart of the city, in the former Midland Bank headquarters.*
- *The 250 bedrooms range in size from intimate to large-scale suites, all with a nod to 1920s glamour.*
- *10 restaurants & bars sit amidst the Ned's historic 3,000sqm former banking hall & lower ground floor, serving food & drinks from around the world.*
- *The 620sqm gym offers daily complimentary classes and extensive cardiovascular, strength and training equipment.*
- *Ned's Club Spa offers a variety of relaxing treatments & a 20m indoor swimming pool with a sauna & steam room.*

HOTEL AMENITIES

20m indoor pool | Sauna | Steam room | Daily evening entertainment |
 Range of full-size Cowshed products | In-room walk-in rainforest shower |
 Range of Soho Skin products | Nespresso coffee machine with selection of
 sustainable coffee pods | Selection of teas | Biscuits | Kettle | Travel adapters |
 Phone chargers | Hairdryer | Flat iron | Lint roller | Kids amenities |
 Laundry | Dry Cleaning | Parking | 24-hour Room service | Chrome Cast |
 complimentary WiFi | Still water | Turndown service

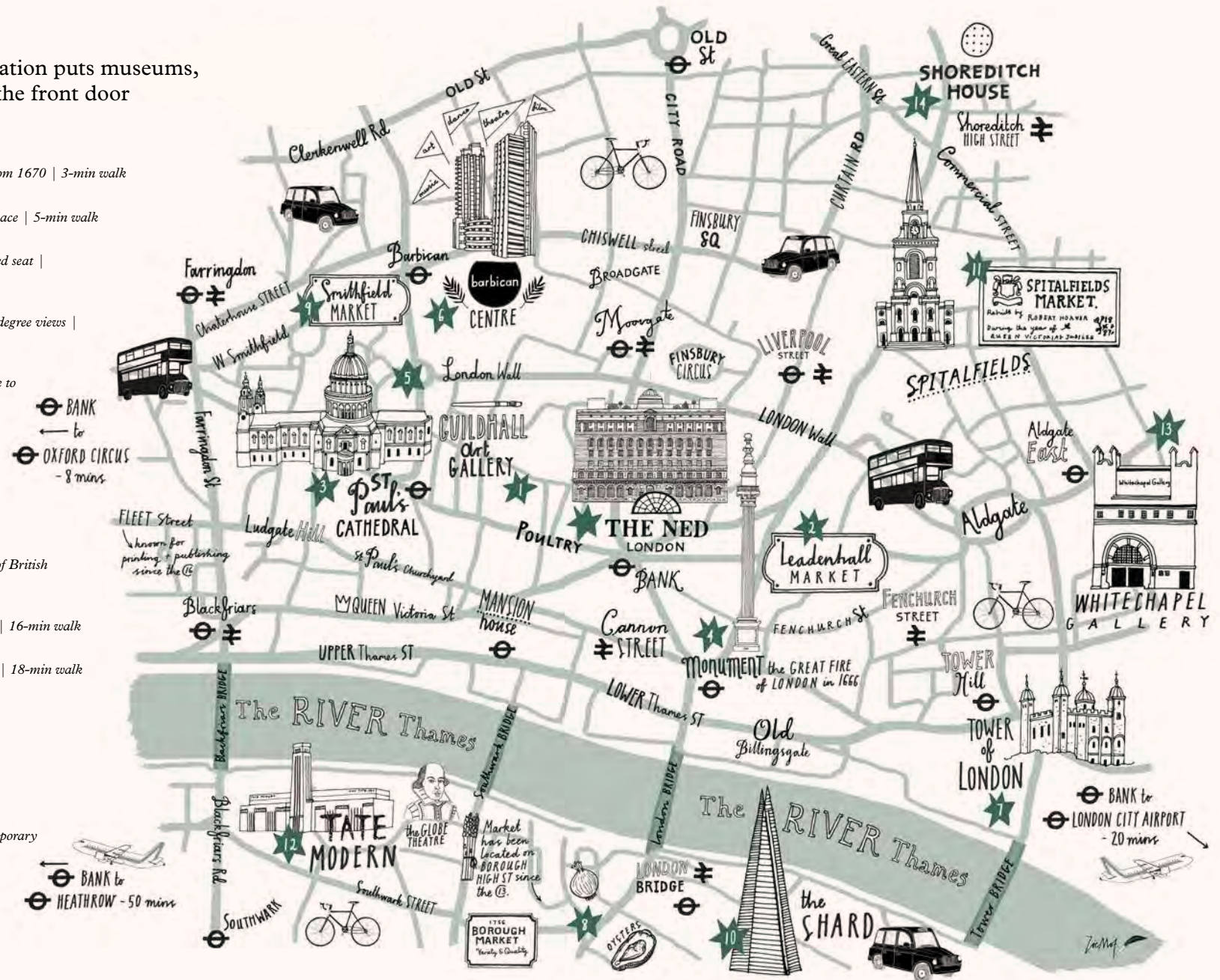
AMENITIES AVAILABLE UPON REQUEST

Dog bed and treats | Iron and ironing board | Extra rollaway bed for an
 additional £60/night (available from Large and above, excluding Stairwell
 Studios)



The Ned London's central City location puts museums, markets and galleries a stroll from the front door

- 1 Guildhall Art Gallery
Home to the City of London's art collection, dating from 1670 | 3-min walk
- 2 Leadenhall Market
Ornate Victorian food market now a thriving retail space | 5-min walk
- 3 St Paul's Cathedral
The Bishop of London's Sir Christopher Wren-designed seat | 7-min walk
- 4 The Monument
Commemorating the Great Fire of London with 360-degree views | 8-min walk
- 5 Museum of London
A potted London history spanning the Roman Empire to present day | 12-min walk
- 6 Barbican Centre
Europe's largest performing arts centre for concerts, theatre and film | 13-min walk
- 7 Tower of London
A castle with a bloody past, now home to the Crown Jewels | 13-min walk
- 8 Borough Market
London's oldest indoor food market peddling the best of British produce | 14-min walk
- 9 Smithfield Market
An 800-year-old wholesale meat and poultry market | 16-min walk
- 10 The Shard
See London and environs from the UK's tallest tower | 18-min walk
- 11 Old Spitalfields Market
Shops, events and food, open seven days a week | 19-min walk
- 12 Tate Modern
Seven storeys of international modern art | 19-min walk
- 13 Whitechapel Gallery
Offbeat space showing work from modern and contemporary masters | 21-min walk
- 14 Shoreditch House
A private members' club with bedrooms in a former warehouse | 23-min walk

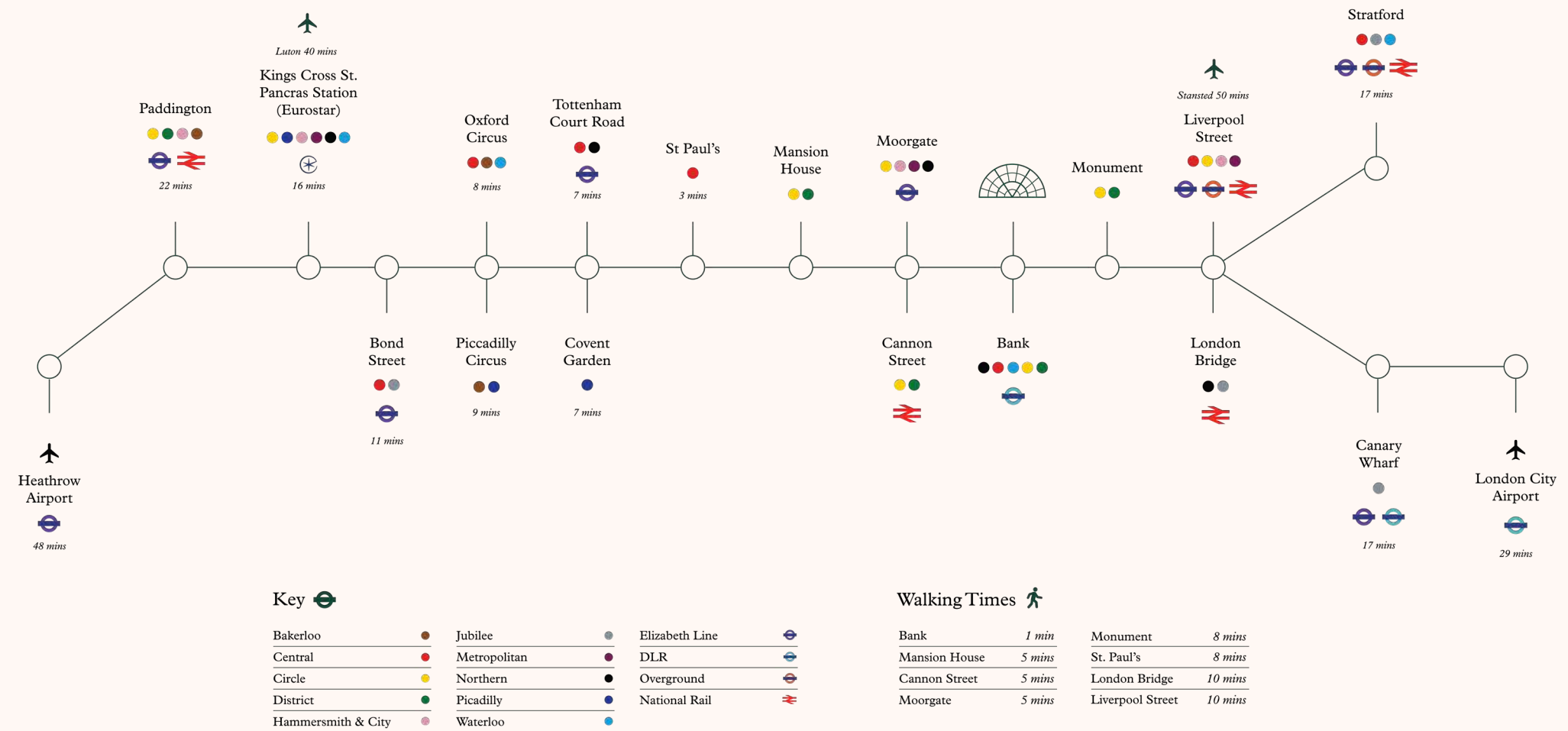




The Ned London is conveniently situated directly next to Bank Station, which combined with the adjoining Monument Station transports more than 120 million passengers per year through its London Underground connections to the Central, Northern, Waterloo & City, District and Circle lines as well as the Docklands Light Railway. Other nearby connections are also available

at Cannon Street, Mansion House, St. Paul's, Fenchurch Street, as well as Moorgate and Liverpool Street.

Transportation links nearby The Ned London provide easy access across Central and Greater London, including international airports such as Heathrow, Gatwick and London City Airport.



Key

Bakerloo	Jubilee	Elizabeth Line
Central	Metropolitan	DLR
Circle	Northern	Overground
District	Piccadilly	National Rail
Hammersmith & City	Waterloo	

Walking Times

Bank	1 min	Monument	8 mins
Mansion House	5 mins	St. Paul's	8 mins
Cannon Street	5 mins	London Bridge	10 mins
Moorgate	5 mins	Liverpool Street	10 mins



THE NED
CITY OF LONDON





Malibu Kitchen

Malibu Kitchen brings healthy Californian food to the City



CANTINA *Malibu*

Cantina Malibu brings you the vibrant flavours of Mexico from 6pm until late



Electric BAR & DINER

American diner with an all-day menu, open kitchen, bar seating and banquettes



Raia

An Asian-Pacific-inspired restaurant specialising in healthy food with poke bowls and sushi



•THE PARLOUR•

An intimate jazz and cabaret restaurant, with live entertainment, dinner and cocktails



LUTYENS GRILL

Set in a historic, former bank, this restaurant serves prime cut steak & seafood dishes



CECCONI'S City of London

Serving handmade pasta, seafood and dishes from Italy using the finest ingredients



Millie's Lounge

A British restaurant and bar in the grand banking hall serving classic dishes and afternoon tea

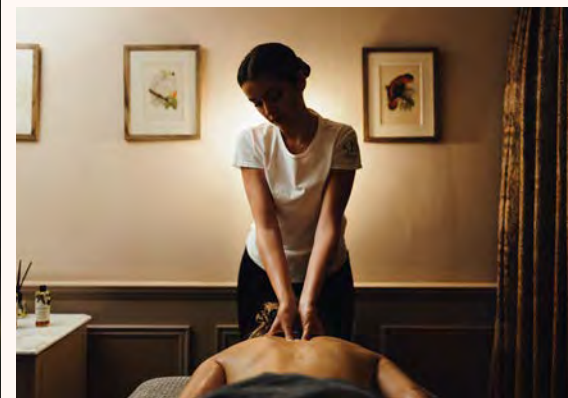


THE NICKEL BAR

LIBRARY BAR

A lively American-style cocktail bar open for drinks and bites from morning until late

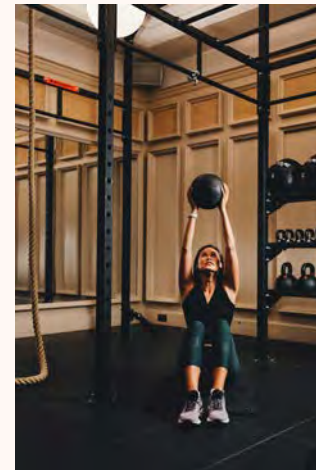






NED'S CLUB SPA

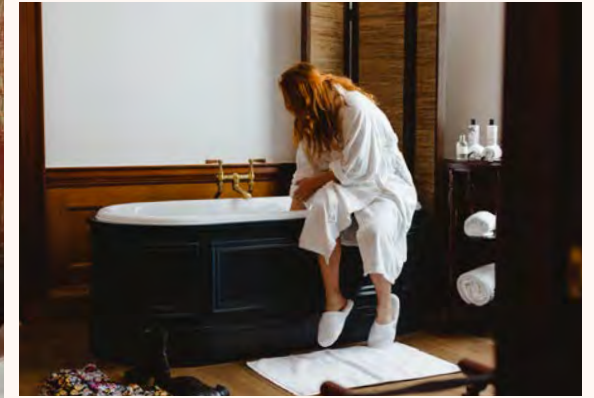
Offering a variety of treatments from signature massages, holistic treatments with de Maniel & Otto, to non-surgical facial procedures with Define Clinic & TriWave LED Facials. Ned's Parlour & Ned's Barbershop are both open daily offering haircuts, colours, blow-dries & hot shaves.



NED'S CLUB GYM

Offering state of the art cardiovascular machines, plate loaded strength training equipment, studio space for group exercise & world class Beaverfit functional training rigs. New for 2024, a Pilates Reformer is available for self-workouts or private training sessions.







COSY BEDROOM

20 - 30 sq m | 215 - 320 sq ft

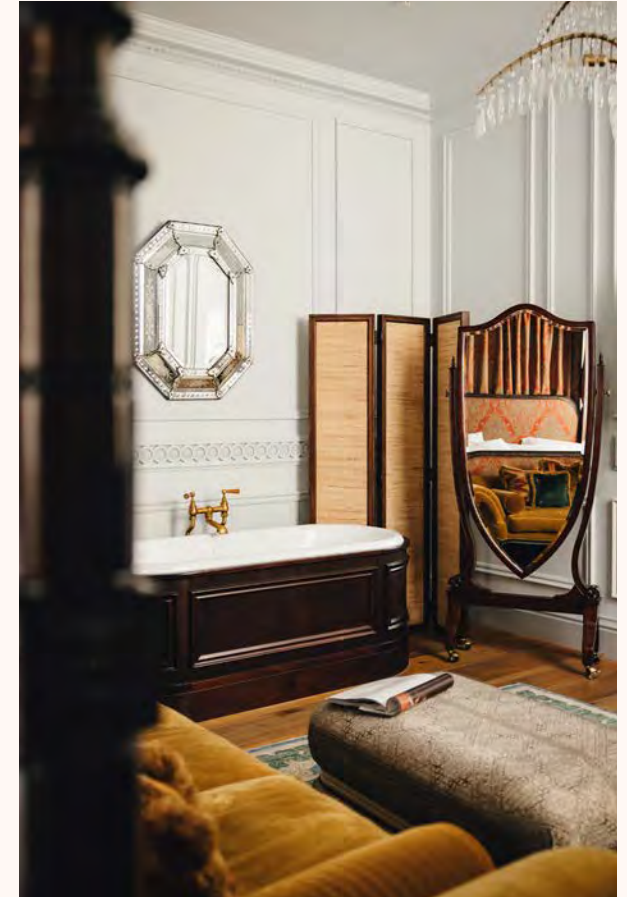
The Cosy room includes a queen size bed, period touches like a leather top drum table, carved oak chairs, and a dressing table along with hand-finished details inspired by an original 1920s design.



MEDIUM BEDROOM

25 - 35 sq m | 270 - 375 sq ft

Our Medium rooms feature Art Deco touches, including a heritage walnut king size bed, tasselled chaise, richly patterned curtains, floral glass chandelier, Jazz Age wall tones, mirrored cocktail cabinet, and velvet club chairs.



LARGE BEDROOM

35 - 45 sq m | 375 - 485 sq ft

Each large room features a king-size bed, a glass palm leaf chandelier, leather wingback chairs, and a vintage bar cabinet. Some rooms offer bathtubs for a relaxing soak. All Large rooms can accommodate an extra bed at an additional charge.





HERITAGE BEDROOM

30 - 45 sq m | 320 - 485 sq ft

Our Heritage rooms are located on the Grade I-listed fifth floor and offer a taste of the building's 1920s heyday with original features designed by renowned architect Sir Edwin 'Ned' Lutyens, including French polished walnut wall panelling and marble fireplaces. Some Heritage rooms offer a freestanding bathtub.

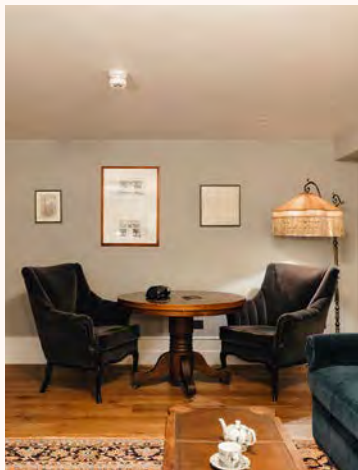


GRAND HERITAGE BEDROOM

40 - 65 sq m | 430 - 700 sq ft

Many of our Grand Heritage rooms feature original floor-to-ceiling French polished walnut wall panelling and a marble fireplace to complement the elegant velvet furniture and a super-king size canopy or four-poster bed. The living area features a vintage silk-covered ottoman, a palm leaf crystal chandelier and a pair of leather wingback chairs. Clawfoot bathtubs invite guests to relax and unwind.





STAIRWELL STUDIO

50 - 60 sq m | 538 - 645 sq ft

Sleeping up to two adults and two children (under 12 years), Stairwell Studios include a king-size bed and a separate vintage-style pull-out bed. In the lounge, tassel armchairs and a velvet sofa sit beside a dining table and chairs. The marble mosaic bathroom features a bathtub with an overhead shower.

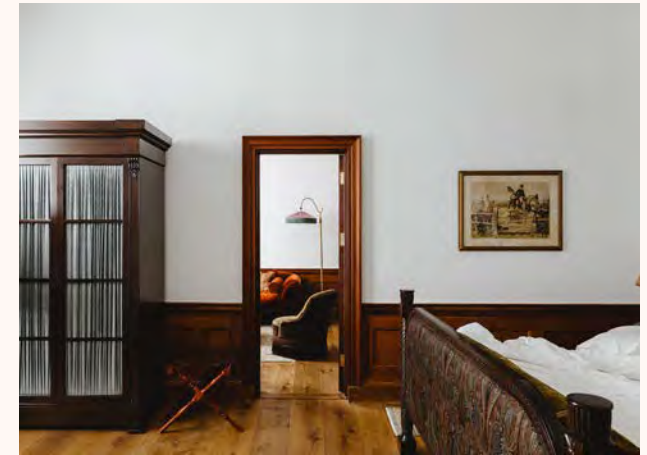


STUDIO SUITE

40 - 45 sq m | 430 - 585 sq ft

Our Studio Suites are furnished with elegant touches such as a vintage crystal chandelier, velvet sofa and a Venetian glass mirror, and feature a king size bed. A vintage bar cabinet offers refreshments to ensure a comfortable stay. In addition to a walk-in rainforest shower, most of our Studio Suites also offer bathtubs.





HERITAGE SUITE

50 sq m | 540 sq ft

A separate lounge, featuring a seating area and a well-stocked cocktail cabinet, leads into the bedroom where a super-king size canopy bed and free standing bathtub take centre stage, alongside an ottoman and palm leaf crystal chandelier. Period details such as French polished walnut panelling, an original marble fireplace and large dome windows throughout – all design signatures of architect Sir Edwin Lutyens – add a sense of 1920s decadence.





TERRACE SUITE

50 sq m | 540 sq ft

Inside, the suite features generous dome windows, a richly draped four-poster king size bed, velvet ottoman and an original mahogany fireplace. A marble bathroom houses a roll top bathtub and walk-in rainforest shower. A doorway from the main bedroom leads outside, where there's a 35 square metre terrace with a large dining area and lounge, the perfect spot for hosting guests.





DUPLEX SUITE

85 sq m | 915 sq ft

Spanning two floors, our Duplex Suite is ideal for relaxing and entertaining. The ground floor features a large, well-stocked bar and dining area for up to six people, with private access to a small terrace with views over Princes Street and the Bank of England. Up on the mezzanine there's a velvet-appointed king size bed and a roll top bathtub.



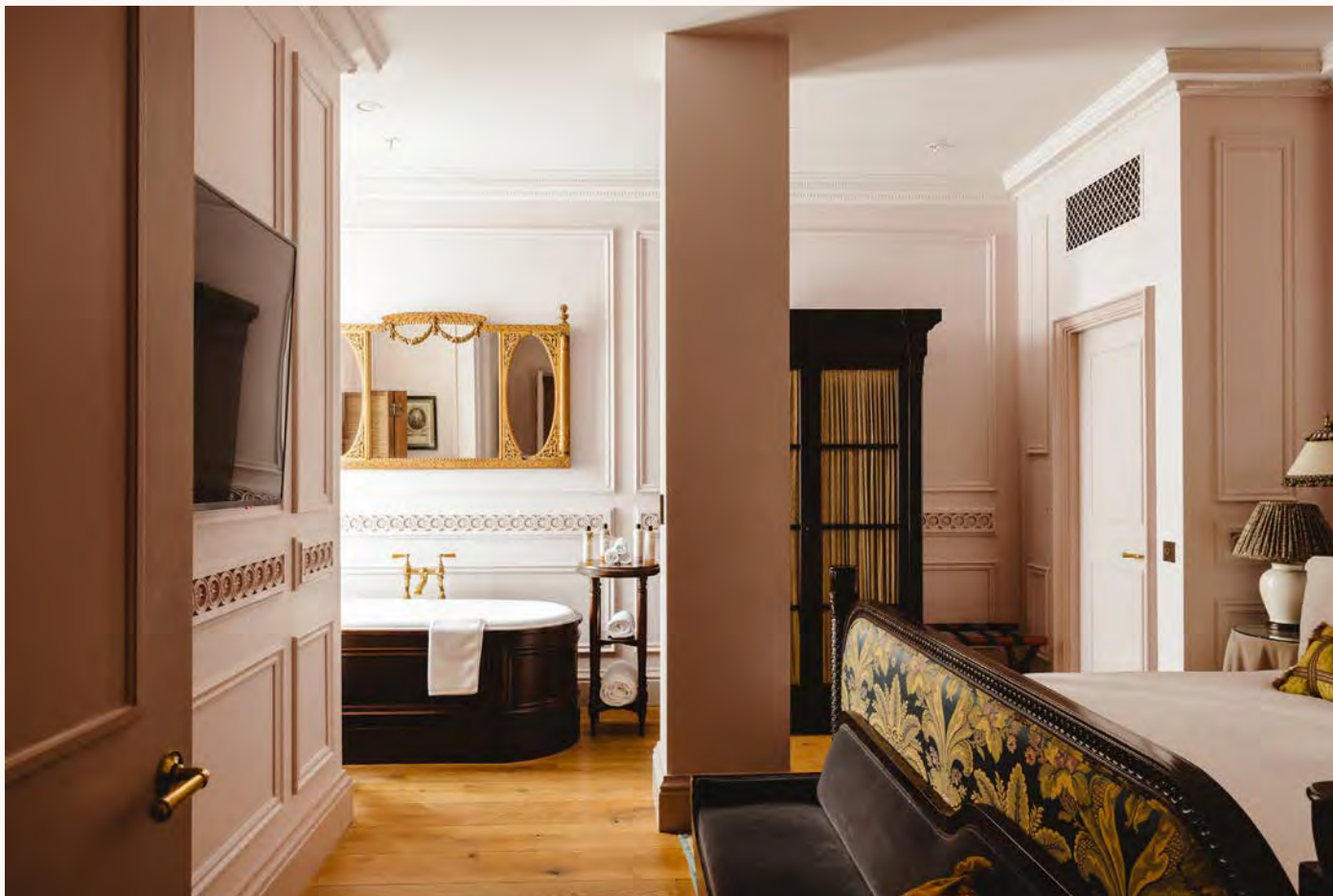


TWO-BED SUITE

95 sq m | 1025 sq ft

There's a large lounge and dining space with a host of period design details: tufted mohair ottomans, Persian rugs and glass chandeliers. The master bedroom has an elegant walnut super-king size bed, large silk-covered wardrobes, Italian lampshades and a freestanding bathtub. The second bedroom features a queen size bed, leather top drum table, oak spoon-back chairs and a dressing table.





LUTYENS SUITE

100 sq m | 1075 sq ft

The 100 square metre Lutyens Suite encompasses two ensuite bedrooms, a large lounge with a custom-made eight-seater corner sofa, and a bar and dining space. The master bedroom features a king size bed, freestanding bathtub and an ensuite marble-clad bathroom. The second bedroom has a queen size bed, dressing table and marble bathroom with a walk-in rainforest shower.



With our 10 restaurants and bars, daily live entertainment and generous in-room amenities, we trust The Ned City of London will be a comfortable place to reside, for even the most discerning travellers. Thank you for your consideration and we are so grateful for your continued partnership.

Our very best, Bo and Paul.



BO VAN STRIJLAND

Group Director of Leisure & Entertainment Sales

bo.vanstrijland@thened.com



PAUL BAPTISTE

Director of Sales

paul.baptiste@thened.com





THENED.COM