

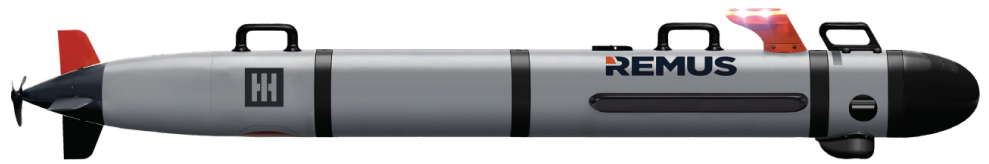


# REMUS 130

## Uncrewed Underwater Vehicle

### The third generation of REMUS 100 two-person portable UUV

*The open architecture and modularity of the REMUS Technology Platform facilitate increased capability and interoperability while decreasing mission risk.*

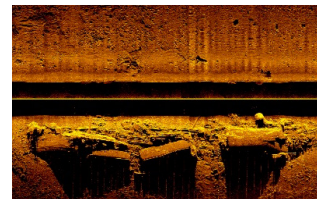


### Mine Countermeasures (MCM)

The REMUS 130 can conduct MCM as well as port and harbor clearance down to 100 meters. Using side-scan sonar, the REMUS 130 surveys large areas autonomously, allowing operators to review the data away from the minefield to identify and classify mine-like objects.

### Search and Recovery (SAR)

REMUS 130 UUVs are rapidly deployable from any vessel and provide large area coverage on a single mission, making them ideal for SAR operations. Side-scan sonar and precision navigation provide highly accurate data to locate targets, including downed aircraft and sunken ships.



### Key Features

- Two-person portable, small-class UUV
- 100-meter depth rated
- Up to 10-hour mission duration
- Speeds up to 5 knots
- Field-swappable Energy Module
- Open architecture
- Modular and reconfigurable



### Forward payload connection

### Other Applications

The REMUS 130's stability and versatility support numerous applications, including:

- Rapid Environmental Assessment
- Marine Archaeology
- Offshore Oil and Gas
- Renewables

Optional scalable modular space is available for integration of payloads to perform customer-defined missions, including:

- Intelligence, Surveillance and Reconnaissance
- Anti-Submarine Warfare

### Advanced Modularity

With the added modularity, the REMUS 130 can be reconfigured for different missions. Blind-mated end caps allow for field-expedient battery exchange during missions as well as reconfiguring with a different payload.



HH.com

## Specifications

Vehicle Specifications:	
Lithium-ion Battery Options	1.5 kWh Battery
Diameter	19cm (7.5 in.)
Length	2.03m (80 in.)
Weight	48.5kg (107 lb.)
Estimated Endurance*	10 hours
Maximum Range*	55km (29nm)
Recharge Time	6 hours
Standard Specifications, Sensors and Payloads	
Depth Rating	100m (330 ft.)
Speed	0-5 knots (0-2.6 m/s)
Propulsion and Control	Direct drive DC brushless motor, open 3-blade propeller; Cruciform fin control (yaw and pitch)
Communications	WHOI micromodem 2.0 high frequency (20-30 kHz) acoustic communications; 2.4 GHz WiFi; Iridium (optional)
Antenna	GPS, WiFi, Iridium, LED status lights and visible and infrared (IR) recovery locating strobe
Navigation	iXblue Phins C3 Inertial Navigation System (INS); Garmin commercial GPS; Long Baseline (LBL); DVL-aided dead reckoning
Doppler Velocity Log (DVL)	Teledyne 300 kHz phased array DVL with 200m bottom lock
Side Scan Sonar	Marine Sonics MK II Arc Scout 900/1800 kHz dual frequency; Resolution up to 5cm; Swath up to 160m
Other Sensors	NBOSI conductivity and temperature (CT) sensor; TE Connectivity depth sensor
Hard Drive	1 TB removeable solid state hard drive; Optional spare drives and data docking station
Warranty	Standard 1 year warranty; Warranty options available
Software	Vehicle Interface Program (VIP) for mission programming and post-mission analysis
External Connections	Gigabit ethernet; Vehicle power/charging (110/220V)
Tracking	Ranger & VIP software via towfish communications; Mission monitoring; Re-direct, loiter and abort commands
Safety Features	Ground fault detection; Leak detection; RJE International emergency locator beacon; Health status
Operations	Capable of operating multiple REMUS vehicles simultaneously
Auxiliary Equipment	Ranger and towfish; Ruggedized laptop; Hub box battery charger; Vehicle maintenance cradle, Operations and maintenance spares
Optional Payloads, Equipment and Software	
Camera	Voyis 4K HD stills monochrome camera module with high intensity LED lightbar
Synthetic Aperture Sonar	Kraken MINSAS 60 module
Environmental Sensors	Seabird Scientific Eco Puck Triplet
Iridium Communications	Iridium capable with encrypted Iridium dial-up and SMS modem; Customer must provide SIM card
HDK and SDK	Hardware Development Kit (HDK) and Software Development Kit (SDK) for integration of third-party payloads and autonomy
Software	SeeByte SeeTrack and Neptune; REmote CONTROL (RECON)
Auxiliary Equipment	LBL transponders; Surface communications station; Extra hard drive and docking station; External battery charger, REMUS Simulator, Transit case with shock absorbent mounting; Lightweight, wheeled cradle

\*At 3.0 knots (1.5 m/s) with standard sensors active

© 2024. Performance specifications are approximate and may vary depending on, operational specifics, and environmental conditions. Specifications are subject to change without notice.



HII.com

HII is a global, all-domain defense provider. HII's mission is to deliver the world's most powerful ships and all-domain solutions in service of the nation, creating the advantage for our customers to protect peace and freedom around the world. As the nation's largest military shipbuilder, and with a more than 135-year history of advancing U.S. national security, HII delivers critical capabilities extending from ships to unmanned systems, cyber, ISR, AI/ML and synthetic training. Headquartered in Virginia, HII's workforce is 44,000 strong. For more information, visit HII.com.

**LEARN MORE:**

USA: +1 508-563-6565  
 Europe: +44 2392 417 222  
[uxs.sales@hii-tds.com](mailto:uxs.sales@hii-tds.com)