



ZHEJIANG HUAYIQIANG TECHNOLOGY CO., LTD.

E.T# hanma Rd.linpu Xiaoshan Hangzhou Zhejiang China

TEL:180 7293 5196 / 0086-571-8250 9400

E-mail:john@extentool.com

www.extentool.com

2024
CATALOGUE



EXTENSION TOOL ONE-STOP SUPPLIER

伸缩工具一站式供应商

>>>www.extentool.com





EXTENSION TOOL ONE-STOP SUPPLIER

COMPANY PROFILE / 公司简介

杭州华一强实业有限公司成立于2011年，位于杭州市萧山临浦工业园区，是一家集研发、制造、贸易为一体的工贸型企业。公司核心产品是各类伸缩杆和配套伸缩工具：如家居清洁、高空清洗、以及园林、户外类工具。产品90%以上出口，主要销往欧、美及全球50多个国家和地区。主要客户为“亚马逊”电商头部卖家、美国大型商超和进口商、品牌商。最近几年，公司业绩以50%以上的速度快速增长。

公司经营十二年来，坚持以创新和研发驱动，产品具有自主知识产权，拥有发明和实用新型专利证书30项，获得“国家高新技术企业”企业和“专精特新”企业称号。公司重视人才和团队建设，建立起完善的组织架构和标准化流程体系建设，获得ISO9001质量体系认证。

目前，“华一强”公司及其EXTENTOOL商标在伸缩工具业内享有良好口碑和声誉，成为行业一股清流！“华一强”坚守工匠精神，以“智造卓越工具、成就美好生活”为使命，为客户和社会不断创造价值，向成为“世界一流工具企业”愿景砥砺前行！为打造享誉世界的民族品牌、为中华民族伟大复兴贡献“华一强”的智慧和力量！

Huayiqiang was established in 2011 and is located in Linpu Industrial Park, Xiaoshan, Hangzhou. It is an industrial and trade enterprise integrating R&D, manufacturing and trade.

The company's core products are various types of telescopic poles and supporting telescopic tools: such as household cleaning, high-altitude cleaning, gardening, and outdoor tools. More than 90% of the products are exported, mainly to Europe, the United States and more than 50 countries and regions around the world. The main customers are the leading e-commerce sellers of "Amazon", supermarkets, importers and brands in the United States. In recent years, the company's performance has grown rapidly at a rate of more than 50%.

In the past 12 years of operation, the company has been driven by innovation and R&D. Its products have independent intellectual property rights, and it has more than 30 patent certificates for inventions and utility models. It has been awarded the title of "National High-tech" enterprise and "Specialized, Specialized and New" enterprise. The company attaches great importance to talent and team building, has established a complete organizational structure and standardized process system, and has obtained ISO9001 quality system certification.

At present, "Huayiqiang" company and its EXTENTOOL trademark enjoy a good reputation and reputation in the telescopic tool industry and have become a breath of fresh air in the industry! "Hua Yiqiang" adheres to the spirit of craftsmanship, takes "intelligent manufacturing of excellent tools, and achieves a better life" as its mission, continuously creates value for customers and society, and moves forward towards the vision of becoming a "World-class tool company" in order to create a world-renowned national brand and contribute the wisdom and strength of "Hua Yiqiang" to the great rejuvenation of the Chinese nation!



TELESCOPIC POLE
CUSTOMIZATION

01-09

铝合金伸缩杆系列	ALUMINUM ALLOY TELESCOPIC POLE SERIES	01-03
玻璃纤维伸缩杆系列	FIBERGLASS TELESCOPIC POLE SERIES	04
碳纤维伸缩杆系列	CARBON FIBER TELESCOPIC POLE SERIES	05
铁制伸缩杆系列	IRON TELESCOPIC POLE SERIES	06
定制流程	CUSTOMIZATION PROCESS	07-09

TELESCOPIC
CLEANING TOOLS

11-20

通水刷系列	WATER FED POLE BRUSH SERIES	11-12
玻璃清洁工具系列	GLASS CLEANING TOOLS SERIES	13-16
除尘工具系列	DUST REMOVAL TOOL SERIES	17-20

TELESCOPIC
GARDEN TOOLS

21-26

高枝锯系列	TELESCOPIC TREE SAW SERIES	22
高枝剪系列	TELESCOPIC TREE PRUNER SERIES	23
落叶耙系列	LEAF RAKE SERIES	24
摘果器系列	FRUIT PICKER SERIES	25
捡果器系列	FRUIT COLLECTOR	26

OTHER
TELESCOPIC TOOLS

27-31

船钩杆	BOAT HOOK POLE	28
换灯器	LAMP CHANGER	29
油漆滚筒刷	PAINT ROLLER BRUSH	30
天窗杆	SKYLIGHT POLE	31

TELESCOPIC TOOL
COMBINATION KIT

32-34

玻璃清洁套装	GLASS CLEANING KIT	33
尘掸套装	DUST DUSTER SET	34

TELESCOPIC POLE CUSTOMIZATION

伸缩杆定制



Model: **TAL-SG**

DESCRIPTION (品名):
Lightweight aluminum alloy single groove telescopic pole

CUSTOMIZED NUMBER OF SECTIONS (节数):
Section 2-7

LOCK STRUCTURE (锁结构):
Flip clamp lock

LOCKING STRENGTH (锁紧强度):
≥15kg

WALL THICKNESS (壁厚):
0.8mm



Model: **TAH-SG**

DESCRIPTION (品名):
Heavy duty aluminum alloy single groove telescopic pole

CUSTOMIZED NUMBER OF SECTIONS (节数):
Section 2-4

LOCK STRUCTURE (锁结构):
Flip clamp lock

LOCKING STRENGTH (锁紧强度):
≥18kg

WALL THICKNESS (壁厚):
1.1mm



Model: **TAP-R**

DESCRIPTION (品名):
Professional aluminum alloy single telescopic pole

CUSTOMIZED NUMBER OF SECTIONS (节数):
Section 2-8

LOCK STRUCTURE (锁结构):
Adjustable plate buckle lock

LOCKING STRENGTH (锁紧强度):
≥25kg

WALL THICKNESS (壁厚):
1mm



Model: **TNAL-SG**

DESCRIPTION (品名):
New aluminum alloy single groove telescopic pole

CUSTOMIZED NUMBER OF SECTIONS (节数):
Section 2-4

LOCK STRUCTURE (锁结构):
Adjustable plate buckle lock

LOCKING STRENGTH (锁紧强度):
≥20kg

WALL THICKNESS (壁厚):
0.9mm



Model: **TAP-D**

DESCRIPTION (品名):
Professional aluminum alloy telescopic pole
(Decagonal)

CUSTOMIZED NUMBER OF SECTIONS (节数):
Section 2-4

LOCK STRUCTURE (锁结构):
Button lock

LOCKING STRENGTH (锁紧强度):
HIGH

WALL THICKNESS (壁厚):
1.2mm



Model: **TAP-R**

DESCRIPTION (品名):
Aluminum alloy cleaning pole

CUSTOMIZED NUMBER OF SECTIONS (节数):
Section 2

LOCK STRUCTURE (锁结构):
Plate buckle lock

LOCKING STRENGTH (锁紧强度):
≥18kg

WALL THICKNESS (壁厚):
1mm



Model: **MSB**

DESCRIPTION (品名):
Multi-section pole

CUSTOMIZED NUMBER OF SECTIONS (节数):
Any number of sections

LOCK STRUCTURE (锁结构):
Twist lock

PIPE DIAMETER (管径):
Φ30.5



Model: **TI**

DESCRIPTION (品名):
Insulated fiberglass telescopic pole

CUSTOMIZED NUMBER OF SECTIONS (节数):
Section 2-3

LOCK STRUCTURE (锁结构):
Flip clamp lock

LOCKING STRENGTH (锁紧强度):
≥18kg

WALL THICKNESS (壁厚):
2mm



Model: **TI-SG**

DESCRIPTION (品名):
Insulated fiberglass + aluminum
telescopic rod (toggle type)

CUSTOMIZED NUMBER OF SECTIONS (节数):
Section 2-3

LOCK STRUCTURE (锁结构):
Flip clamp lock

LOCKING STRENGTH (锁紧强度):
≥18kg

WALL THICKNESS (壁厚):
Fiberglass tube 2mm, Aluminum tube 0.8mm



Model: **TI-A**

DESCRIPTION (品名):
Insulated fiberglass + aluminum
telescopic pole (button type)

CUSTOMIZED NUMBER OF SECTIONS (节数):
Section 2

LOCK STRUCTURE (锁结构):
Button lock

LOCKING STRENGTH (锁紧强度):
HIGH

WALL THICKNESS (壁厚):
Fiberglass tube 2mm, Aluminum tube 1.2mm



50%C



Model: TCP-50%C

DESCRIPTION (品名):
Professional semi-carbon fiber telescopic pole

CUSTOMIZED NUMBER OF SECTIONS (节数):
Section 2-9

LOCK STRUCTURE (锁结构):
Adjustable plate buckle lock

LOCKING STRENGTH (锁紧强度):
≥25kg

WALL THICKNESS (壁厚):
1mm



100%C



Model: TCP-3K100%C

DESCRIPTION (品名):
Professional full carbon fiber telescopic pole

CUSTOMIZED NUMBER OF SECTIONS (节数):
Section 2-9

LOCK STRUCTURE (锁结构):
Adjustable plate buckle lock

LOCKING STRENGTH (锁紧强度):
≥25kg

WALL THICKNESS (壁厚):
1mm



Model: IT-RT-I

DESCRIPTION (品名):
Iron telescopic pole (plate buckle type)

CUSTOMIZED NUMBER OF SECTIONS (节数):
Section 2

LOCK STRUCTURE (锁结构):
Flip clamp lock

LOCKING STRENGTH (锁紧强度):
≥15kg

WALL THICKNESS (壁厚):
1mm



Model: IT-RT-II

DESCRIPTION (品名):
Iron telescopic pole (inner twist lock)

CUSTOMIZED NUMBER OF SECTIONS (节数):
Section 2

LOCK STRUCTURE (锁结构):
Internal rotation lock

LOCKING STRENGTH (锁紧强度):
≥15kg

WALL THICKNESS (壁厚):
1mm



Model: IT-RT-III

DESCRIPTION (品名):
Iron telescopic pole (outer knob lock type I)


CUSTOMIZED NUMBER OF SECTIONS (节数):
Section 2

LOCK STRUCTURE (锁结构):
External rot

LOCKING STRENGTH (锁紧强度):
ation lock

WALL THICKNESS (壁厚):
≥15kg

1mm



Model: IT-RT-IV

DESCRIPTION (品名):
Iron telescopic pole (outer knob lock type II)

CUSTOMIZED NUMBER OF SECTIONS (节数):
Section 2

LOCK STRUCTURE (锁结构):
External rotation lock

LOCKING STRENGTH (锁紧强度):
≥15kg

WALL THICKNESS (壁厚):
1mm

CUSTOMIZATION PROCESS

定制流程



1

PROVIDE DEMAND 提供需求

Provide sales with the application scenarios of the telescopic pole, the required head accessories, or directly provide finished product drawings

SELECT / RECOMMEND SUITABLE TELESCOPIC POLE

选择/推荐合适的伸缩杆

Based on the needs you provide, the sales staff will recommend a telescopic pole designed to meet your product requirements.

2

3

PROOFING CONFIRMATION 打样确认

Both parties confirm the design details of the sample and make the sample for customer testing and confirmation. Confirmed samples need to be kept and sealed.

QUOTATION AND SIGNING

报价签约

After the sample is confirmed and passed, we will promptly provide the customer with a quotation and delivery date for mass production, and sign a contract for production.

4

5

PRODUCTION QUALITY INSPECTION 生产质检

According to the terms of the contract and in accordance with the sealed sample, the production will be completed within the delivery period and will be submitted to the customer for inspection.

PAYMENT BEFORE SHIPMENT

付款并发货

After passing the inspection, the customer pays the final payment and delivers the goods.

6

HEJIAJIANG
—3—

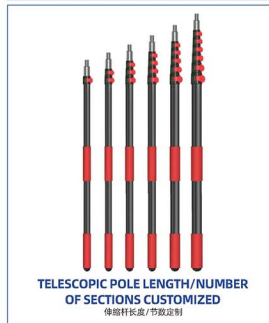
TELESCOPIC POLE
OEM/ODM



BRAND COLOR CUSTOMIZATION

品牌颜色定制

Full range of PANTONE color numbers customized

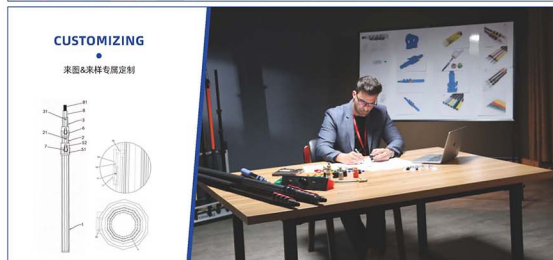




CUSTOMIZED
PACKAGING
•
定制包装



CUSTOMIZATION OF SUPPORTING APPLICATION TOOLS
•
配套应用工具定制



CUSTOMIZING
•
来图来样专属定制



HUAYI QIANG
华一强

TELESCOPIC CLEANING TOOLS

清洁伸缩工具系列



Model: TWB-SG
**SINGLE GROOVE POLE
WATER FED BRUSH**

单凹槽通水刷


Model: TWB-R
**WATER FED POLE BRUSH
WATER FED BRUSH**

专业型通水刷


Model: TWB-R


① 12FT aluminum telescopic pole

② brush head

③ 5/8mm pipe

④ Allen wrench

⑤ Tap quick connection

⑥ Angle adjustment

⑦ Pacifier quick connect

⑧ 1/4 European quick connector

⑨ Water separator connector

Model: TWB-D
**WATER FED POLE BRUSH
WATER FED BRUSH**

十边形通水刷


Model: IT-RT-II
**WATER FED POLE BRUSH
WITH SQUENEGE**

双向通水刷


POLE NORMAL SIZE

NO.	POLE MATERIAL	EXTENDED SIZE	CLOSED SIZE	SECTION	PACKING SIZE	MOQ
TWB-12F-R	Aluminum	12FT	4.3FT	4	128*16*10	240 Sets
TWB-18F-R		18FT	5.7FT		168*16*10	240 Sets
TWB-20V-R		20FT	6.4FT		5	162*16*10
TWB-24V-R		24FT	6.3FT	180*16*10		240 Sets
TWB-30X-R		30FT	6.4FT	6		190*16*10
TWB-36X-R		36FT	7.6FT		225*16*10	240 Sets



Model **DGS-5** WINDOW CLEANER
刮窗器

MATERIAL (材质):
Stainless steel + Rubber + Plastic

CONNECTION METHOD (连接方式):
Taper sleeve connection

ADAPTABLE TELESCOPIC POLE (适配伸缩杆):
TAL-SG / TAP-R / TNAL-SG

REGULAR SIZE (常规尺寸):
2.4m/3.6m/5.4m



Model **DGS-6**

WINDOW CLEANER
刮窗器

MATERIAL (材质):
Stainless steel + Rubber + Plastic

ADAPTABLE TELESCOPIC POLE (适配伸缩杆):
TAL-SG / TAP-R / TNAL-SG

CONNECTION METHOD (连接方式):
Taper sleeve connection

REGULAR SIZE (常规尺寸):
2.4m/3.6m/5.4m



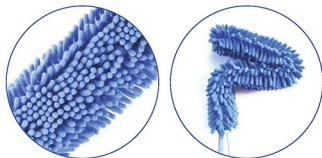
Model **DGS-7** GLASS SCRAPER
玻璃铲刀

MATERIAL (材质):
PP+Steel

CONNECTION METHOD (连接方式):
Taper sleeve connection

ADAPTABLE TELESCOPIC POLE (适配伸缩杆):
TAL-SG / TAP-R / TNAL-SG

REGULAR SIZE (常规尺寸):
2.4m/3.6m/5.4m



Model: **CD-1** **CHENILLE DUSTER**
雪尼尔尘掸

MATERIAL (材质):
PP+Chenille

CONNECTION METHOD (连接方式):
American thread head

ADAPTABLE TELESCOPIC POLE (适配伸缩杆):
TAL-SG / TAP-R / TNAL-SG / TI

REGULAR SIZE (常规尺寸):
2.4m/3.6m/5.4m/7.2m



Model: **MD-1** **MICROFIBER DUSTER**
超细纤维尘掸

MATERIAL (材质):
PP+Microfiber

CONNECTION METHOD (连接方式):
American thread head

ADAPTABLE TELESCOPIC POLE (适配伸缩杆):
TAL-SG / TAP-R / TNAL-SG / TI

REGULAR SIZE (常规尺寸):
2.4m/3.6m/5.4m/7.2m



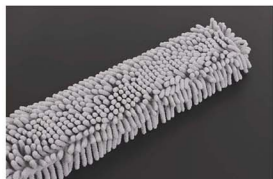
Model: **CB-1** **COBWEB BRUSH**
蛛网刷

MATERIAL (材质):
High quality polypropylene

CONNECTION METHOD (连接方式):
American thread head

ADAPTABLE TELESCOPIC POLE (适配伸缩杆):
TAL-SG / TAP-R / TNAL-SG / TI

REGULAR SIZE (常规尺寸):
2.4m/3.6m/5.4m/7.2m



Model: **CD-2** **CHENILLE DUSTER**
雪尼尔尘掸

MATERIAL (材质):
PP+Chenille

ADAPTABLE TELESCOPIC POLE (适配伸缩杆):
TAL-SG / TAP-R / TNAL-SG / TI

CONNECTION METHOD (连接方式):
American thread head

REGULAR SIZE (常规尺寸):
2.4m/3.6m/5.4m/7.2m



Model: **CB-2** **COBWEB BRUSH**
蛛网刷

MATERIAL (材质):
High quality polypropylene

ADAPTABLE TELESCOPIC POLE (适配伸缩杆):
TAL-SG / TAP-R / TNAL-SG / TI

CONNECTION METHOD (连接方式):
American thread head

REGULAR SIZE (常规尺寸):
2.4m/3.6m/5.4m/7.2m



Model: **MD-2** **MICROFIBER DUSTER**
超细纤维尘掸

MATERIAL (材质):
PP+Microfiber

ADAPTABLE TELESCOPIC POLE (适配伸缩杆):
TAL-SG / TAP-R / TNAL-SG / TI

CONNECTION METHOD (连接方式):
American thread head

REGULAR SIZE (常规尺寸):
2.4m/3.6m/5.4m/7.2m

TELESCOPIC GARDEN TOOLS

园林伸缩工具系列



Model: **THSS-SG**

TELESCOPIC HIGH BRANCH SAW

伸缩式高枝锯

MATERIAL (材质):

Aluminum alloy+SK5+Sponge+PP

ADAPTABLE TELESCOPIC POLE (适配伸缩杆):

TAL-SG / TAH-SG / TAP-R / MSB ...

CONNECTION METHOD (连接方式):

Screw connection

REGULAR SIZE (常规尺寸):

2.4m/3.6m/5.4m/6m/7.2m/9m



Model: **THSS-1**

HOOKLESS SAW

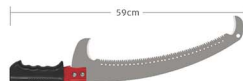
无钩锯



Model: **THSS-3**

SINGLE HOOK SAW

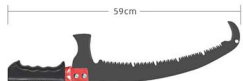
单钩锯



Model: **THSS-2**

DOUBLE HOOK SAW

双钩锯



Model: **THSS-4**

TRIPLE HOOK SAW

三钩锯



Model: **THBS-SG**

TELESCOPIC TREE PRUNER

伸缩式高枝剪

MATERIAL (材质):

Aluminum alloy+SK5+Sponge+PP

ADAPTABLE TELESCOPIC POLE (适配伸缩杆):

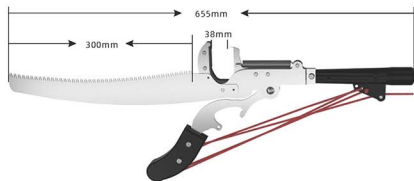
TAL-SG / TAH-SG / TAP-R / MSB ...

CONNECTION METHOD (连接方式):

Screw connection

REGULAR SIZE (常规尺寸):

2.4m/3.6m/5.4m/6m/7.2m/9m



Antirust coating



Three side grinding saw blade



Non-slip cutting board



Four wheel labor saving pulley



Model: **TLR-SG**

TELESCOPIC LEAF RAKE

伸缩式落叶耙

MATERIAL (材质):

High carbon steel wire

ADAPTABLE TELESCOPIC POLE (适配伸缩杆):

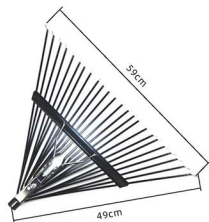
TAL-SG / TAH-SG / TAP-R / TAP-D ...

CONNECTION METHOD (连接方式):

Screw connection

REGULAR SIZE (常规尺寸):

1.2m/2.4m/3.6m



Model: **TLR-SG-1**

LEAF RAKE [NON-SHRINKABLE]

落叶耙【不可收缩款】



Model: **TLR-SG-2**

LEAF RAKE [SHRINKABLE VERSION]

落叶耙【收缩款】



Model: **TFP-SG**
TELESCOPIC FRUIT PICKER
伸缩式挑果器

MATERIAL (材质):
A3 iron wire + High temperature dipping

ADAPTABLE TELESCOPIC POLE (适配伸缩杆):
TAL-SG / TAH-SG / TAP-R / TI / TI-SG...

CONNECTION METHOD (连接方式):
American thread head

REGULAR SIZE (常规尺寸):
2.4m/3.6m/5.4m/6m/7.2m/9m



Model: **TFP-1**
INTEGRATED IRON FRUIT PICKER
一体式铁制挑果器



Model: **TFP-2**
SPLIT IRON FRUIT PICKER
分体式铁制挑果器



Model: **TFP-3**
PLASTIC FRUIT PICKER
塑料挑果器



Model: **TFP-4**
CLOTH BAG FRUIT PICKER
布袋挑果器



Model: **TP-SG**
TELESCOPIC FRUIT COLLECTOR
伸缩式捡果器

MATERIAL (材质):
Stainless steel

ADAPTABLE TELESCOPIC POLE (适配伸缩杆):
TAL-SG / TAH-SG / TAP-R...

CONNECTION METHOD (连接方式):
Internal thread tip

REGULAR SIZE (常规尺寸):
1.2m/2.4m/3.6m



Model: **TP-1**
BIG SIZE COLLECTOR
大规格捡拾器



Model: **TP-2**
SMALL SIZE COLLECTOR
小规格捡拾器



OTHER TELESCOPIC TOOLS

其他伸缩工具



Model: **TSHR-R**

TELESCOPIC BOAT HOOK POLE
伸缩式船钩杆

MATERIAL (材质):
Nylon+Aluminium

ADAPTABLE TELESCOPIC POLE (适配伸缩杆):
TAP-R / TAP-D / TAP-3K100%C ...

CONNECTION METHOD (连接方式):
American thread head + Punched connection

REGULAR SIZE (常规尺寸):
3.6m/5.4m/6m/7.2m





Model: **LCS**
LAMP CHANGER SET
伸缩式换灯器

MATERIAL (材质):
Stainless steel + Plastic

ADAPTABLE TELESCOPIC POLE (适配伸缩杆):
TAL-SG / TAH-SG / TAP-R / TI / TI-SG...

CONNECTION METHOD (连接方式):
Threaded head connection

REGULAR SIZE (常规尺寸):
2.4m/3.6m



Model: **LCS-1**
SUCTION CUP LAMP CHANGER
吸盘换灯器



Model: **LCS-2**
IRON LAMP CHANGER 1
铁制换灯器1



Model: **LCS-3**
IRON LAMP CHANGER 2
铁制换灯器1



Model: **TPRB-SG**
RETRACTABLE PAINT ROLLER BRUSH
伸缩式油漆滚筒刷

MATERIAL (材质):
Nylon brush wire

ADAPTABLE TELESCOPIC POLE (适配伸缩杆):
TAL-SG / TAH-SG / TAP-R / TI / TI-SG...

CONNECTION METHOD (连接方式):
American thread head / Taper sleeve

REGULAR SIZE (常规尺寸):
1.2m/2.4m/3.6m





Model: **TWOR-D**

TELESCOPIC SKY OPENER

伸缩式开窗器

MATERIAL (材质):

Aluminum alloy + Plastic

ADAPTABLE TELESCOPIC POLE (适配伸缩杆):

TAL-SG / TAH-SG / TAP-R / TI / TI-SG...

CONNECTION METHOD (连接方式):

American thread head

REGULAR SIZE (常规尺寸):

2.4m/3.6m/5.4m



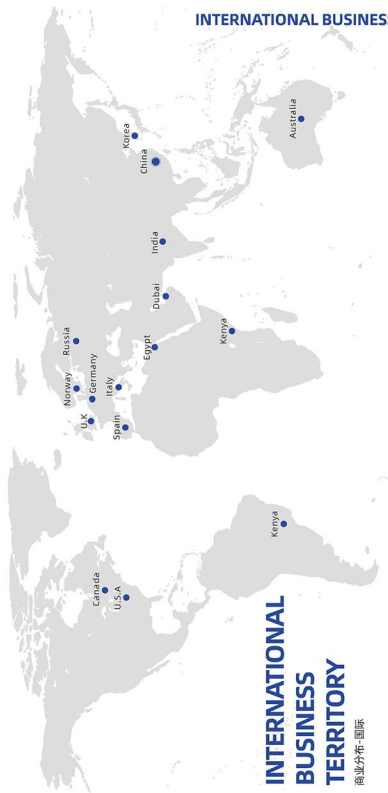
TELESCOPIC TOOL COMBINATION KIT

伸缩工具组合套件



INTERNATIONAL BUSINESS TERRITORY

商业分布·国际



INTERNATIONAL BUSINESS TERRITORY

商业分布·国际

企业荣誉

standing director
国际伸缩工具行业协会常务理事
INTERNATIONAL EXTENSION TOOL INDUSTRY ASSOCIATION STANDING DIRECTOR

阿里巴巴
Alibaba.com

阿里巴巴国际金品供应商
GOLD SUPPLIER FOR ALIBABA GLOBAL MARKET

高新技术企业证书

企业名称: 杭州华一强实业有限公司 证书编号: GR2021330066647
发证日期: 2021年12月16日 有效期: 三年
发证机关:

荣誉证书
HONORARY CERTIFICATE

杭州华一强实业有限公司
浙江省专精特新中小企业

浙江省经济和信息化厅
杭经信[2023]159号 发布日期:2023年12月23日

QUALITY MANAGEMENT SYSTEM CERTIFICATE

Registration No. 0382020000000000

This is to certify that the quality management system of Hangzhou Orienjohn Industry Co., Ltd. (hereinafter referred to as the client) has been certified to conform to the requirements of ISO 9001:2015 Standard.

This certificate is valid for the following product(s): Design, production and service of extension tools. (Site General: Tongji Village, Linze Town, Xiaoshan District, Hangzhou City, Zhejiang Province, China).

Date of Issue: February 22, 2021
Date of expiry on next: February 21, 2024

Representation: **Shengyong**

IAF CNAS

杭州华一强实业有限公司

刘强
常务理事

浙江华一强实业有限公司
二〇二三年一月

2021年度
创新发展

刘强
杭州华一强实业有限公司

萧山区中小企业联合商会
2021年9月