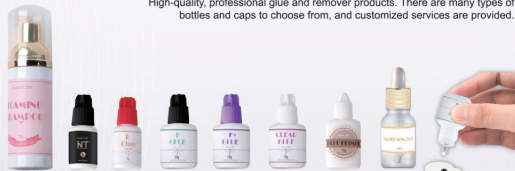


• EYELASH EXTENSION TOOLS •

Liquids for Eyelash Extension

High-quality, professional glue and remover products. There are many types of bottles and caps to choose from, and customized services are provided.



Lash Perm Kit

- Give you natural curled lash for a full month
- A box of perm lash can be reused for a few times
- Everyone can easily do it

- Including:
- Lash Lift Glue
  - Fixing Lotion
  - Eyelash Applicator
  - Perming Lotion
  - Nurturing Lotion
  - Lash Curler Band

Accessories

We have a professional purchasing department, and most products support private customization.

- Eyelash Brushes
- Pads & Glue Rings
- Training Tools
- Eyelash Tweezers
- Tapes & Patches
- Pillow & Bed



• COMPANY PROFILE •

Our company focuses on the production and R&D of eyelash extension, strip eyelashes, eyelash tools and other eyelash products. Till now, we have accumulated more than 20 years of experience in the production and sales of eyelashes.



20 years eyelash manufacturing experience

20+ Years



Independent design and development team

Professional service team and 24 hours online service



Strong production capacity

Strict quality management



100% quality guaranteed



QINGDAO JAUNTY SKY ARTS AND CRAFTS CO., LTD

OEM ODM

JAUNTY SKY  
JUST SAY YES

INNOVATIVE GLOBAL LEADER IN EYELASH MANUFACTURING

Your private custom factory



Eyelash manufacturer since 2003

24 HOURS ONLINE SERVICE  
Professional R&D department and design team

EYELASH  
MANUFACTORY  
Since 2003

www.jauntysky.com

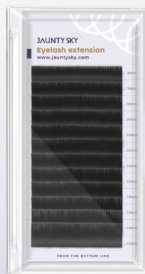
whatsapp: +86 186 6175 3183

mike@jauntysky.com

• EYELASH EXTENSIONS •

Classic Eyelash Extension

The most classic eyelash product, ultra-light and ultra-soft. There are many styles of colored eyelashes in a variety of colors that are not easy to fade, suitable for creating unique eye makeup.



Easily remove from the strip



Colorful Eyelash Extension



• TIME-SAVING EYELASHES •

Quick Fan Lash

Different from single layer camellia lashes, it has 2 or 3 layers and is easier to bloom. You can choose Single length or Mixed lengths.

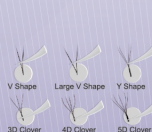


Multiple layers  
Mixed lengths  
Easy to bloom  
Volume



Self Blooming Eyelash Extension

With a fixed Y/V/W shape, one lash becomes two or more, which is more suitable for guests who like thick styles.



3D Clover  
4D Clover  
5D Clover



• FLAT EYELASH EXTENSIONS •



### 8 Shape D Flat Lash

Special craft makes the contact area bigger, sticks more firmly and lasts longer. Two tips make lashes appear thicker.

Bigger contact area  
Longer lasting time

Two Tips Flat Lash

• PRE-MADE FAN LASHES •

### Long Root Pre-made Fans

The tape is applied to the root of the lashes. Fiber number is 3-6D, which can create a voluminous look.



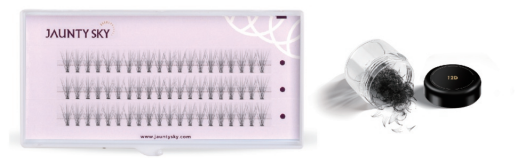
### Short Root Pre-made Fans

The tape is applied to the middle of the lashes. Fiber number is 2-12D. Sharp base style is very popular.



• CLUSTER LASHES •

Pre-set segmented lashes. It saves time on styling and has many styles, which is a popular trend. Can be grafted by yourself.



### Melt Flare Lash

Black

### Fishtail Series

Fishtail 01  
Fishtail 02  
Fishtail 03

### A Lash

4 colors

### Spike Lash

Black

### Sprite Lash

Black

### V Lower Lash

Black

### V Iris Lash

Black

### Flower Lash

Black

• STRIP EYELASHES •

There are many styles, natural, bushy, exaggerated, extra long and more. Thousands of types are available for you to choose from.

- 3D Effect Multiple layers
- Super Thin Clear band available
- Super Soft Korean PBT fiber
- Various Styles Thousands of types

3D Eyelashes      Natural Lashes

Hand Knot Lashes      Biodegradable Material      Super Long

Special Styles      Colorful Lashes      Real Mink Lashes

• TOOLS FOR STRIP EYELASHES •

There are professional glues and tweezers, both of which provide customized services.



• MAGNETIC EYELASHES •

### Regular Magnetic Lashes

Place 5-10 magnets on the stem. Used with Magnetic Eyeliner. The location, size and quantity of magnets can be customized. All the strip lashes can be customized to Magnetic lash.



### Magnetic Eyeliner

Exclusively for magnet eyelashes.



### Double Layers Magnetic Lashes

Place 3-6 magnets on the stem. Used with Magnetic Tweezers. Two pieces of lashes place on one eye.



### Soft Magnetic Lashes

The magnetic piece is newly upgraded, softer and more suitable.



### Magnetic Lashes Kits

