

# New Energy Vehicles



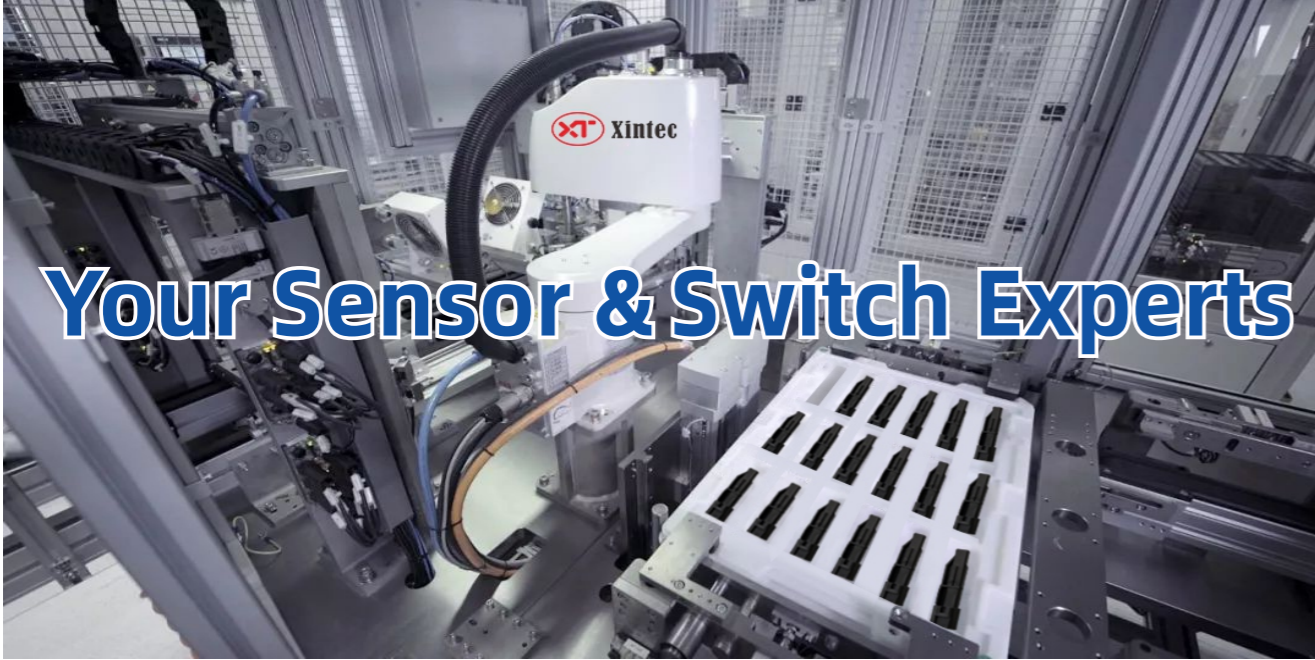
## Automotive Solutions - Examples

<p>Vehicle EDR</p>	<p>Steering Wheel Angle Sensor</p>	<p>Level Sensor - Washer Tank</p>
<p>Crankshaft Speed Sensor</p>	<p>Safety Belt System Sensor</p>	<p>Fluid Indicator - Brake Fluid Tank</p>
<p>Suspended Height Sensor</p>	<p>Throttle Position Sensor</p>	<p>Level Sensor - Fuel Tank Cap</p>
<p>Pressure Sensor Based TPMS</p>	<p>Transmission Shifter Position Sensor</p>	<p>Level Sensor - Expansion Tank for EV</p>
<p>Parking Brake Sensor</p>	<p>Accelerator Pedal Force Sensor</p>	<p>Conductivity Sensor - Coolant Tank</p>
<p>Brake Pedal Force Sensor</p>	<p>Smart Angle Sensor</p>	<p>Angle Sensor - Thermal Management Valve</p>

# Xintechnology Electronics Co., Ltd.

Your Sensor & Switch Experts





# Your Sensor & Switch Experts

## Company Profile

Xintechnology (Xintec) is an enterprise founded in 2014 with headquarter in HK. We specialize in providing standard and customized sensing solutions and smart sensors (with owned design MCU built-in). The company owns professional R&D team, advanced manufacture equipment and scientifically stringent management system to aid the design and production of quality products for customers. Xintec's products mainly apply to Automotive, Industrial Control, Home Appliances, Security, Heat, Ventilation Air-Conditioning (HVAC), Water Treatment, Food & Beverage Equipment, IoT and Parking Lot System. Our products widely use the technologies such as Magnetic, Hall, Capacitance, Inductance, Infra-Red, Microwave, Ultrasonic, and Resistance for:-

- Level sensing
- Proximity/Distance sensing
- Pressure sensing
- Temperature sensing
- Light sensing
- Sound sensing
- Speed sensing
- Humidity sensing
- Gas sensing and many more.....

With accordance to the market demand and customers' needs, Xintec has established multiple production bases and customer service centers located in

- Hong Kong, China (Headquarter)
- Shenzhen, China (Design Center, Sales Office and Factory)
- Huizhou, China (Sales Office and Factory)
- Guangzhou, China (Design Center and Sales Office)
- Los Angeles, USA (Sales Office and Service Center)
- Warsaw, Poland (Sales Office and Service Center)
- DaNang, Vietnam (Sales Office and Factory)
- Durban, South Africa (Sales Representative Office)

With prerequisite of outperforming in production and services, we lay emphasis on research and set up our own laboratory and testing centers to collaborate with universities in HK and China for mutual product development and technical breakthroughs. Based on the extraordinary investment and results from R&D, Xintec is deemed as National High-Tech Enterprise by government.

Upholding the belief of Faith, Integrity, Sincerity and treating customers as our very first priority, Xintec has gained trust and support from customers in and out, which enables the rapid growth and flourishing of the Company. In return, Xintec will sustain its high quality in goods and services so as to thrive and build a better future with all parties hands in hands.

## Xintechnology Electronics Co., Ltd.

Tel: +852 2368 8866

E-mail : michelle@xintec.hk

Address: Asia Trade Centre, No.79 Lei Muk Road, Kwai Chung, N. T., Hong Kong

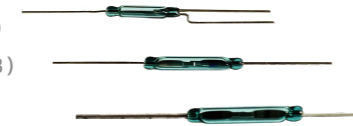


www.xintec.hk

## Sensor Product Series for Varied Industries

### Reed Switches

- Normally-open (Form A)
- Normally-closed (Form B)
- SPDT (Form C)



### Liquid-level Sensors(Reed Switch)

- ABS/PP/Nylon/SUS (body or float)
- Single, dual, multi-level detection
- A wide selection of standards to choose from



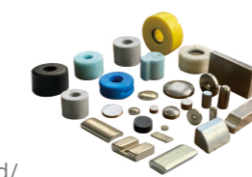
### Hall Effect Sensors

- Linear or non-linear output
- Different sensitivities optional
- Small in size and long lifespan
- Different materials of housings optional(plastic, metal,...etc)
- A wide selection of standards to choose from



### Magnets and Floats

- Rare Earth(NdFeB, AlNiCo, Ferrite), Rubber, Epoxy bonded
- Different size and intensity optional
- Plastic Float(ABS/PP/Nylon/Foamed/Ultrasonic/Hot plate /Plastic welding)
- A wide selection of standards and customizations to choose from



### Inductive Sensors

- No moving contact and high reliability
- High sensitivity
- Wide measuring range
- Long lifespan



### Flow Sensors

- Reed Switch Type and Hall Type optional
- Simple structure with high sensitivity, low flow can be detected(0.1ml/min)
- A wide selection of standards and customizations to choose from



### Ultrasonic Sensors

- Non-contact liquid detection
- High precision and stable performance
- Suitable for liquid detection of different densities and forms
- Suitable for liquid detection for container of different materials and thicknesses
- Small in size and easy to install, suitable for various liquid detections
- Short response time



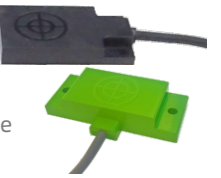
### Proximity Sensors

- Plastic housing(or customized housing)
- Different detection range optional
- Different plug optional
- A wide selection of standards to choose from



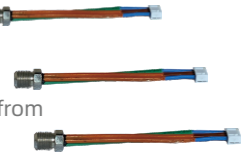
### Capacitance Sensors

- Simple structure
- Low power consumption
- Stable performance with short response time
- Operate steadily in a harsh environment
- A wide selection of standards and customizations to choose from



### Temperature Sensors

- PTC/NTC
- TRS (Temperature Reed Switch)
- A wide selection of standards to choose from



### Active Infrared Detectors

- 2, 4, 6, 8, 10 beams optional
- Connection type: wired, wireless, WIFI
- Adjustable reaction speed
- Max. detection range: 250 meters



### Passive Infrared (PIR) Detectors

- High accuracy and stable performance
- Strong anti-interference
- Suitable for indoor and outdoor
- A wide selection of standards and customizations to choose from



### Microwave Motion Modules

- Detection range is up to 200 meters
- Wide operating temperature range(-40°C— 65°C)
- DC power input
- A wide selection of standards to choose from



### Optical Sensors and Assemblies

- Through-beam/Reflective/LASER-Reflective/Diffuse
- Small-scale structure and low cost
- Short response time and long lifespan
- A wide selection of standards and customizations to choose from



Standard and customized solutions requests are welcome

Automotive · HVAC · Home Appliances · Industrial Control · Security · IoT