

**KINTEX**  
shows the world



## CONTENTS

KINTEX at a Glance	4
Vision & History	6
Business	8
6 Reasons to Visit KINTEX	10

### **KINTEX Exhibition and Convention Facilities**

Exhibition Halls	14
Multipurpose Halls	16
Conference Rooms	18

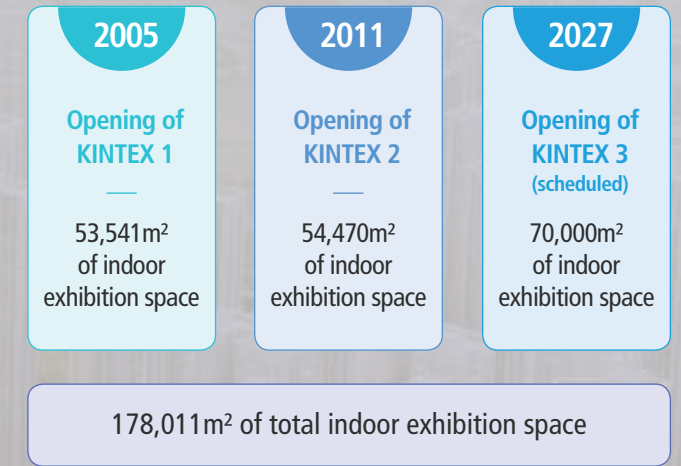
### **MICE Services & Infrastructure**

Catering	22
Subsidiary Facilities	23
Transportation	24
MICE Complex Development Plan	25

# KINTEX at a Glance

The construction of KINTEX's 3rd complex, the center stage of Asia's economy and the future of the Republic of Korea, will secure a total of 178,011m<sup>2</sup> of indoor exhibition space. Equipped with facilities and services optimized for exhibitions and conventions of various sizes, KINTEX provides distinguished MICE services.

## KINTEX's three-phase development plan



### Largest Global Venue

- Scale with global competitiveness
- 178,011m<sup>2</sup> of indoor exhibition space
- Korea's largest & world's top 20

### New KINTEX Complex

- Strengthening connectivity of existing facilities and creating new spaces
- Expansion of KINTEX 1, 2 and 3

### Int'l Convention & Exhibition

- Variability to correspond to exhibitions of various sizes
- 100,000m<sup>2</sup> of integrated exhibition halls

### KINTEX 1

- 53,541m<sup>2</sup> of indoor exhibition space (opened in 2005)

### KINTEX 2

- 54,470m<sup>2</sup> of indoor exhibition space (opened in 2011)

### KINTEX 3A (scheduled)

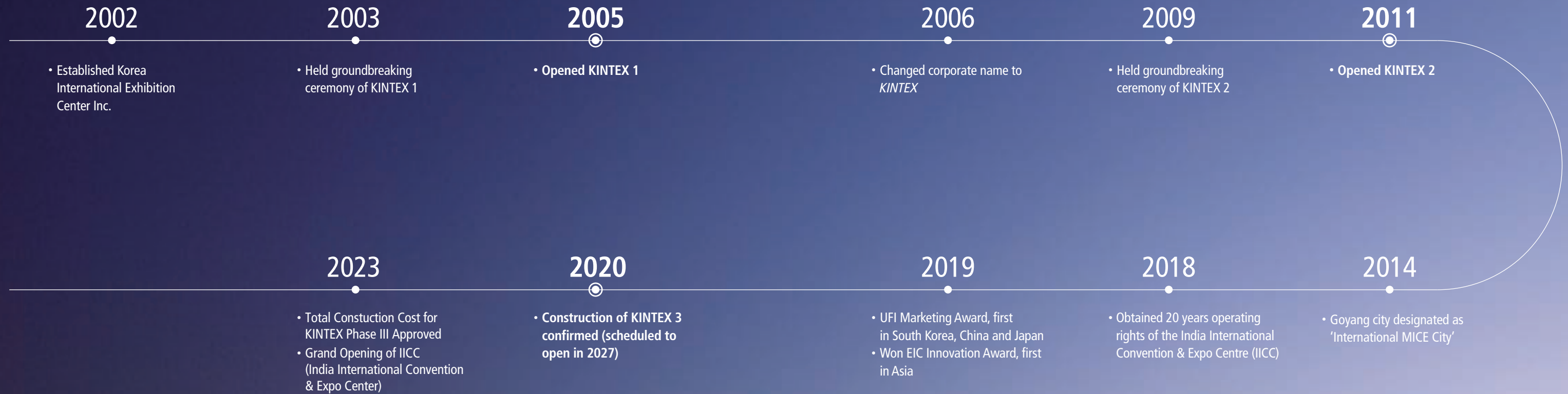
- 46,000m<sup>2</sup> of indoor exhibition space (scheduled to open in 2027)
- In connection with KINTEX 1, a total of 100,000m<sup>2</sup> of integrated exhibition space available

### KINTEX 3B (scheduled)

- 24,000m<sup>2</sup> of indoor exhibition space (scheduled to open in 2027)
- Smaller exhibition halls that can be divided and combined to hold exhibitions of various scale

# Vision & History

Through hosting world-class exhibitions and conventions, KINTEX serves as a site for trade marketing of domestic and overseas companies. Together with clients, KINTEX will elevate Korea's exhibition and convention culture, enhance Korea's status as the center hub of Northeast Asia, and furthermore, become the key player of Korea's future economy.





## Business

KINTEX is opening up limitless possibilities for development by attracting large-scale domestic and international exhibitions and conventions, branding self-organized exhibitions, operating venues worldwide, and adding value through subsidiary facilities.

### 01 Attracting Events

- Through active marketing, KINTEX attracts and develops world-class exhibitions and conventions to provide a site for trade marketing of leading domestic and international companies
- KINTEX facilitates internationalization of exhibitions KINTEX by supporting export consultation meetings



### 02 Organizing KINTEX Brand Exhibitions

- KINTEX expands strategic alliances with overseas exhibition centers and continuously develop joints projects
- KINTEX hosts and fosters exhibitions of future competitive industries through strategic M&A



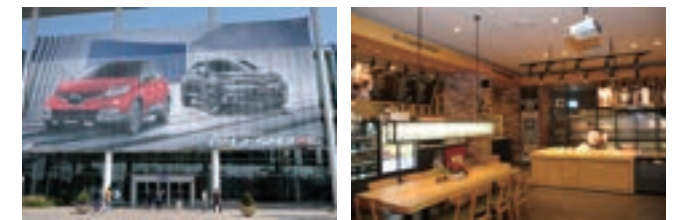
### 03 Entrusted Management of Exhibition Centers

- By providing marketing and rental support for various events and hosting KINTEX brand exhibitions in various industries, KINTEX is stepping up as a specialized entrusted operating institution for not only domestic but also overseas exhibition centers



### 04 Developing Value Added Business

- KINTEX revitalizes value added business on the basis of customer satisfaction
- To enhance client convenience, KINTEX develops value added business such as advertisements and operation of F&B facilities





6 Reasons to Visit

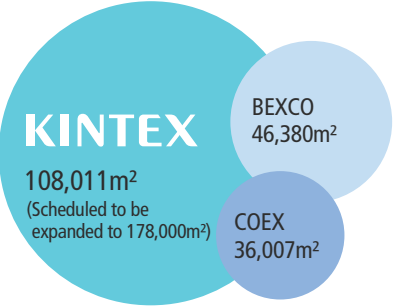
# KINTEX

KINTEX has become a leading business partner with the experience of successfully hosting 100,000m2 scale events and having the capacity to provide state of the art facilities, infrastructure and services.



### 01 KINTEX Facilities and Dimensions (as of 2023)

- Korea's largest venue
- Convenient to construct installations due to the one-story column-free structure and high ceiling of exhibition halls
- Able to host heavy equipment exhibitions due to the floor load capacity of 5 ton/m<sup>2</sup>

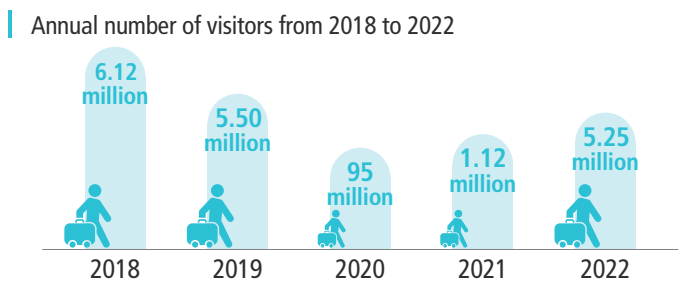


### 02 Geographical Advantages

Optimized for global business in the Asian market which has a population of 1.8 billion



### 03 Annual Number of Visitors



2022 Major Tourist Destination Visitors Statistics (Research by the Korea Culture and Tourism Institute)

1st	Everland (Amusement park)	5.77 million
2nd	<b>KINTEX</b>	<b>5.31 million</b>
3rd	Lotte World (Amusement park)	4.51 million
4th	National Museum of Korea	3.39 million
5th	Gyeongbokgung Palace	3.38 million

### 04 Flagship Events

KINTEX hosts numerous industrial and consumer goods exhibitions that are the most representative in their respective fields



### Continued Increase in the Number of Events Hosted

Year	Number of Events (total)	Specialized Exhibitions	Cultural Events	Conferences
2018	1,382	144	143	1,095
2019	1,384	151	128	1,105
2020	514	72	39	403
2021	654	81	91	482
2022	1,070	91	128	851

### 05 Parking and IT Infrastructure

Parking Lot	Temporary Parking Lot	Bus Parking Lot
<b>Total : 4,334 vehicles</b>	<b>Total : 6,974 vehicles</b>	<b>Total : 500 vehicles</b>
KINTEX 1 : 1,943 vehicles KINTEX 2 : 2,391 vehicles	5 parking lots surrounding KINTEX	KINTEX 1 outdoor exhibition area : 50 vehicles KINTEX 2 loading area : 100 vehicles Temporary parking lot : 350 vehicles


**Free wifi**  
35,000 simultaneous connections capacity

### 06 Entertainment

Various attractions that can complement events hosted at KINTEX

Shopping Malls	Lakins Mall, La Festa, Western Dome
Large Commercial Facilities	Hyundai Department Store, E-Mart Town
Amusement Facilities	One Mount, Hanwha Aqua Planet aquarium
MICE Complex (scheduled)	Techno Valley, CJ Culture Content Complex, etc.





## World-class Exhibition, Convention, and Cultural Space **KINTEX**

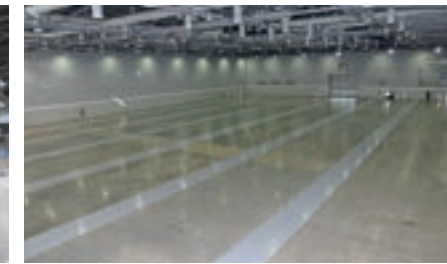
As Korea's largest exhibition center with state of the art facilities, KINTEX, through its 3-phase construction plan, will secure a total of 178,011m<sup>2</sup> of exhibition space. KINTEX is steering Korea to become one of Asia's top 4 exhibition powers providing optimized facilities and services for all events and hosting promising exhibitions in various industries at home and abroad.

# Exhibition Halls

As Korea's largest venue with 108,011m<sup>2</sup> of indoor exhibition space, KINTEX provides optimized facilities and services for the successful hosting of small and medium-sized exhibitions and various cultural events to large international exhibitions.



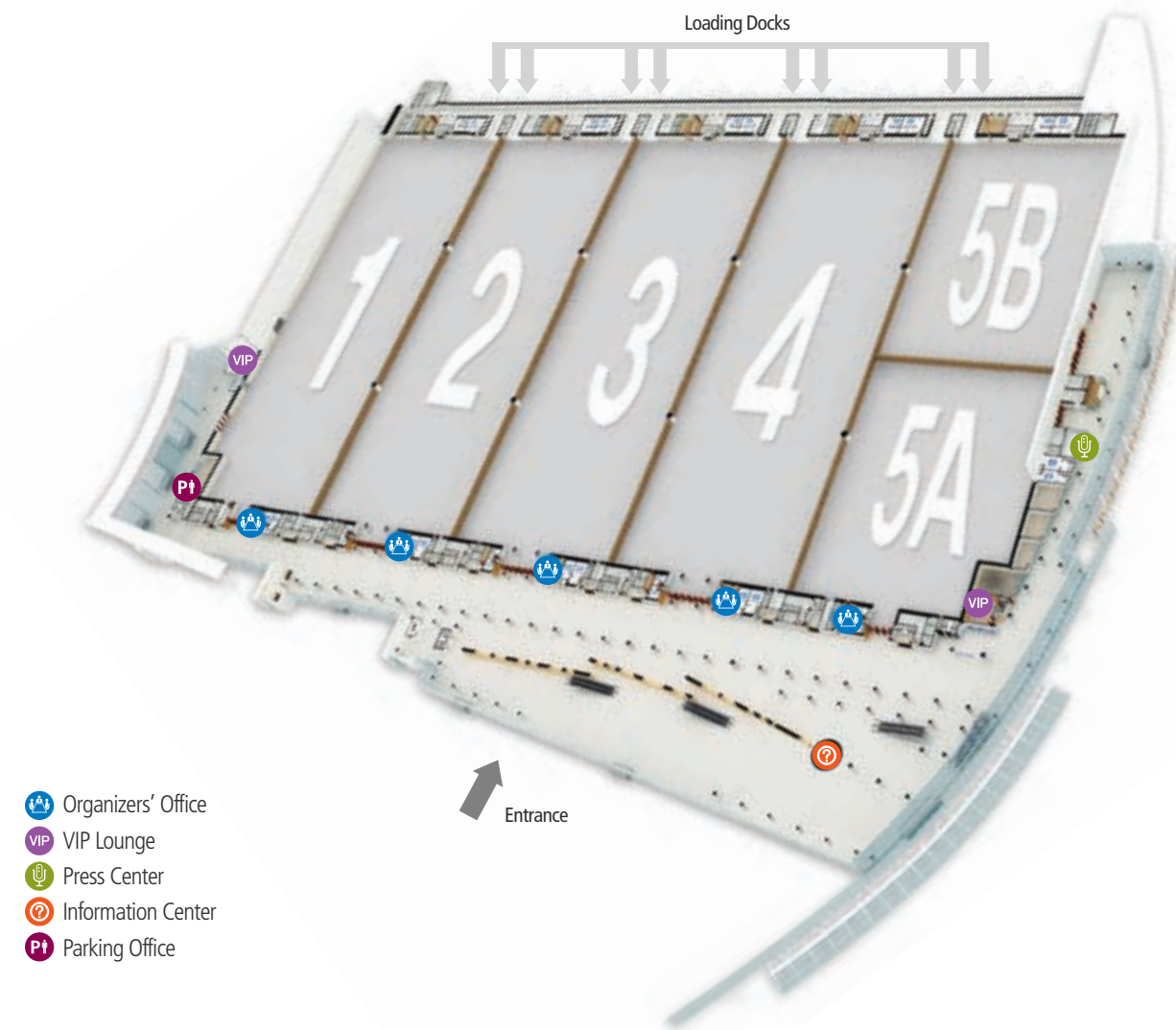
KINTEX 1



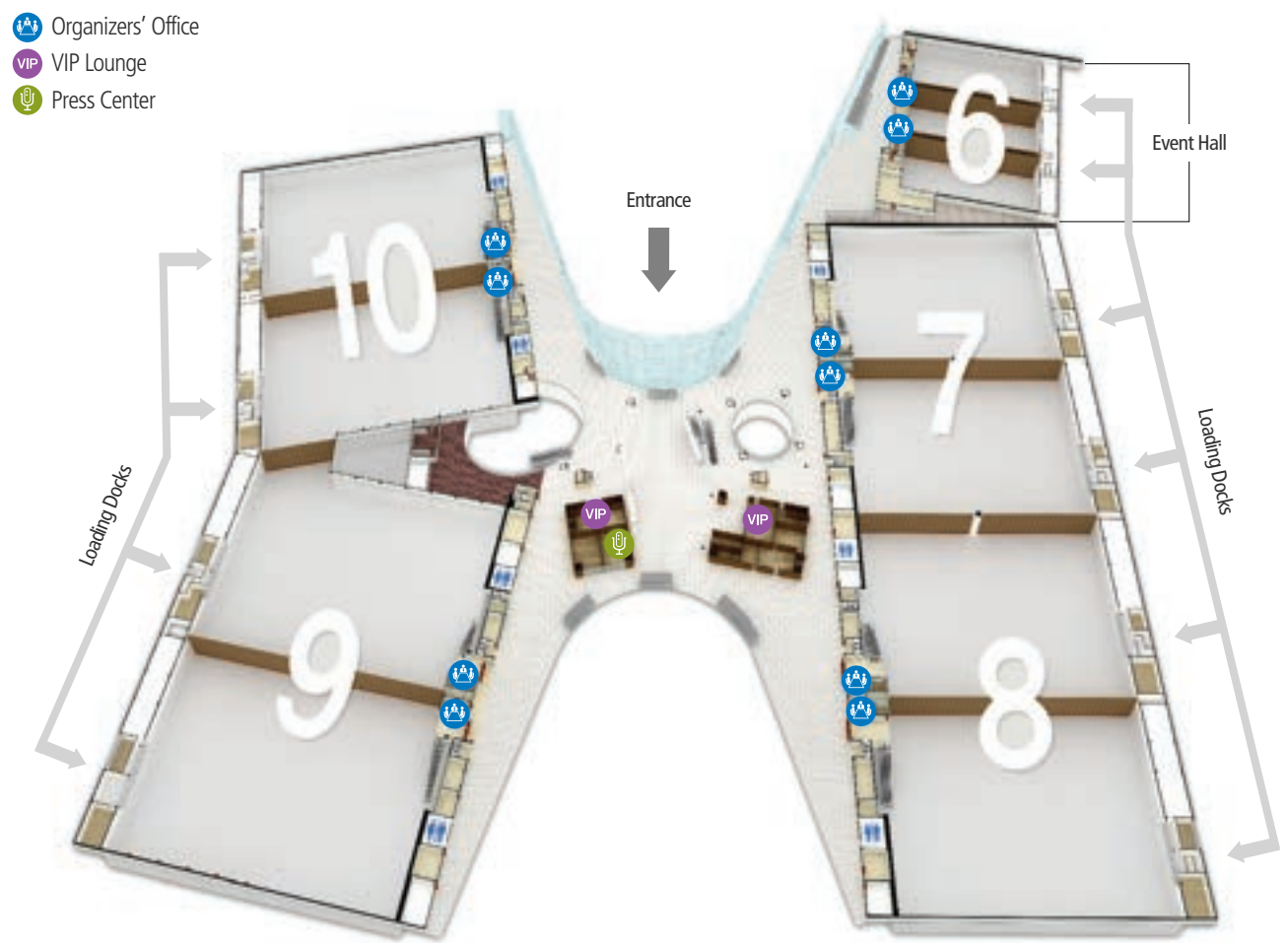
KINTEX 2



Hall 6, KINTEX 2



- Organizers' Office
- VIP Lounge
- Press Center
- Information Center
- Parking Office



- Organizers' Office
- VIP Lounge
- Press Center

## KINTEX 1 Exhibition Halls

- One-story column-free structure: indoor exhibition space of 53,541m<sup>2</sup>, outdoor exhibition space of 2,849m<sup>2</sup>
- Exhibition of heavy equipment: ceiling height of 15m allows installation of two-story booths and riggings
- Each of the 5 halls are dividable using mobile partitions as well as be combined to form one large integrated hall
- State of the art IT environment: wireless internet with the capacity of 35,000 simultaneous connections

Hall	Exhibition Space	Dimensions(m/LxWxH)	Floor Load(ton/m <sup>2</sup> )
Hall 1	10,611m <sup>2</sup>	171 x 63 x 15	5
Hall 2	10,773m <sup>2</sup>	171 x 63 x 15	5
Hall 3	10,773m <sup>2</sup>	171 x 63 x 15	5
Hall 4	10,773m <sup>2</sup>	171 x 63 x 15	5
Hall 5	10,611m <sup>2</sup>	171 x 63 x 15	5
<b>Total</b>	<b>53,541m<sup>2</sup></b>		
Outdoor Exhibition Area	2,849m <sup>2</sup>	56 x 52	5

## KINTEX 2 Exhibition Halls

- Two-story structure and various ceiling heights: ceiling heights of 10-15m can facilitate exhibitions of various sizes
- Floor load of 5t/m<sup>2</sup> enables the exhibition of heavy equipment
- Each of the 5 halls are dividable using mobile partitions as well as be combined to form larger halls
- State of the art IT environment: wireless internet with the capacity of 35,000 simultaneous connections

Hall	Exhibition Space	Dimensions(m/LxWxH)	Floor Load(ton/m <sup>2</sup> )
Hall 6	5,580m <sup>2</sup>	92 x 61 x 10	2
Hall 7	11,290m <sup>2</sup>	126 x 90 x 12	5
Hall 8	11,290m <sup>2</sup>	126 x 90 x 12	5
Hall 9	13,238m <sup>2</sup>	132 x 99 x 15	5
Hall 10	13,072m <sup>2</sup>	132 x 99 x 15	5
<b>Total</b>	<b>54,470m<sup>2</sup></b>		

Multipurpose Hall

# Event Hall (Hall 6)

The Event Hall located in KINTEX 2 is equipped with the interior and equipment for prestigious banquets and seminars.

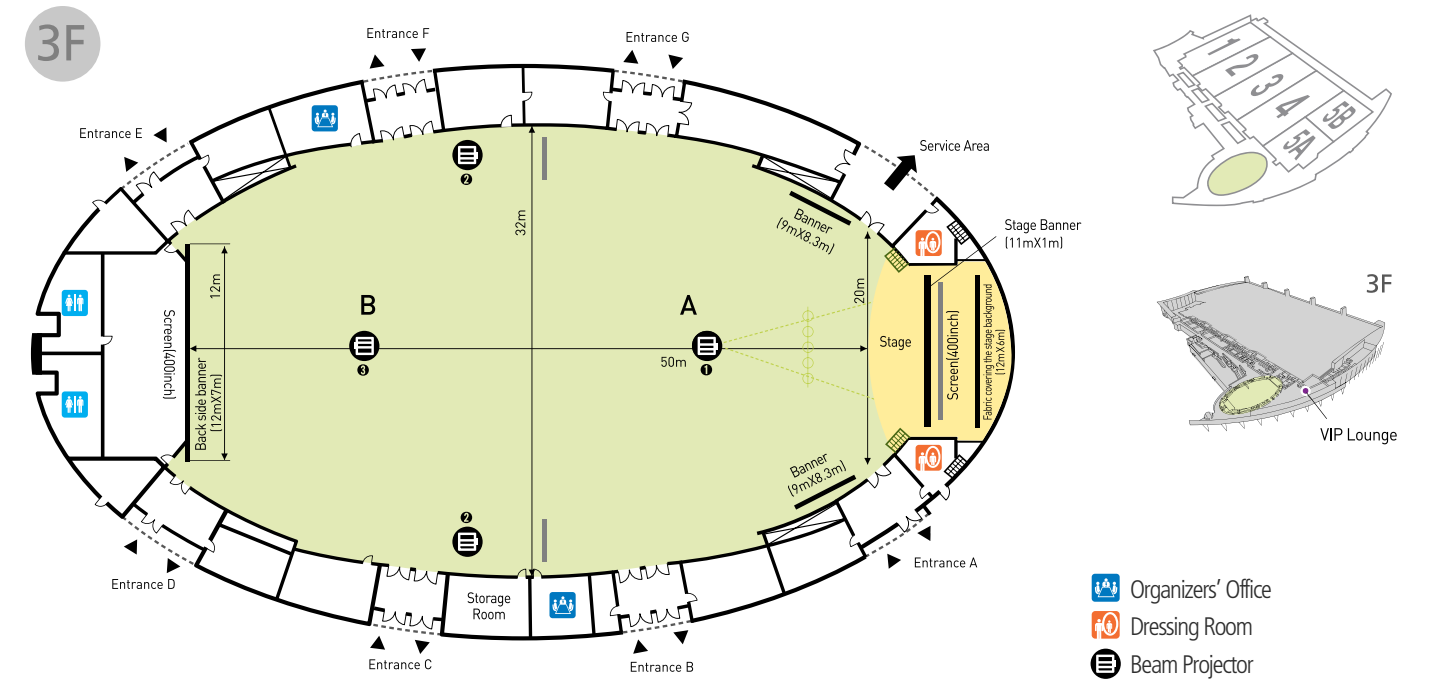


- Dressing Room
- VIP Lounge
- Freight Elevator
- Organizers' Office
- Cargo Entrance
- Support Center
- Main Speaker
- Beam Projector 10,000ANSI
- Beam Projector 20,000ANSI

Multipurpose Hall

# Grand Ballroom

The Grand Ballroom, located in KINTEX 1, is equipped with state of the art facilities such as 8-language simultaneous interpretation booths, AV system, and a VIP lounge specialized for large-scale conferences and prestigious events.



- Organizers' Office
- Dressing Room
- Beam Projector

Category	Content				
	Width(m)	Length(m)	Height(m)	Area(m <sup>2</sup> )	
Dimensions	Whole	93	61	10	5,580
	One Third	31	61	10	1,860
	One Sixth	31	31	10	930
Capacity	Lecture(Classroom)	Theater	Banquet	Reception	
	Whole	2,400	5,400	2,700	6,000
	One Third	800	1,600	900	2,000
	One Sixth	400	800	450	1,100
Equipment	Floor Load : 2 ton/m <sup>2</sup>		Mobile Stage	Reception	
	Screen(built-in, 300")		Screen(built-in, 400")		
	Beam Projector 20,000 ANSI 1ae Beam Projector 10,000 ANSI 5ae				
	One sixth : 10 microphones (7 wired, 3 wireless) One third : 20 microphones (14 wired, 6 wireless) Whole : 60 microphones (42 wired, 18 wireless)				
Banner Hanger	Spotlight		Ellipsoid light	Moving light	
	Conference microphones can be installed				
Subsidiary Facilities	Front : 22m Side : 14m Rear : 20.6m				
	1st floor : 3 organizers' offices, 1 VIP lounge, 1 dressing room, 1 storage room 2nd floor : 12 simultaneous interpretation booths, 3 control rooms				

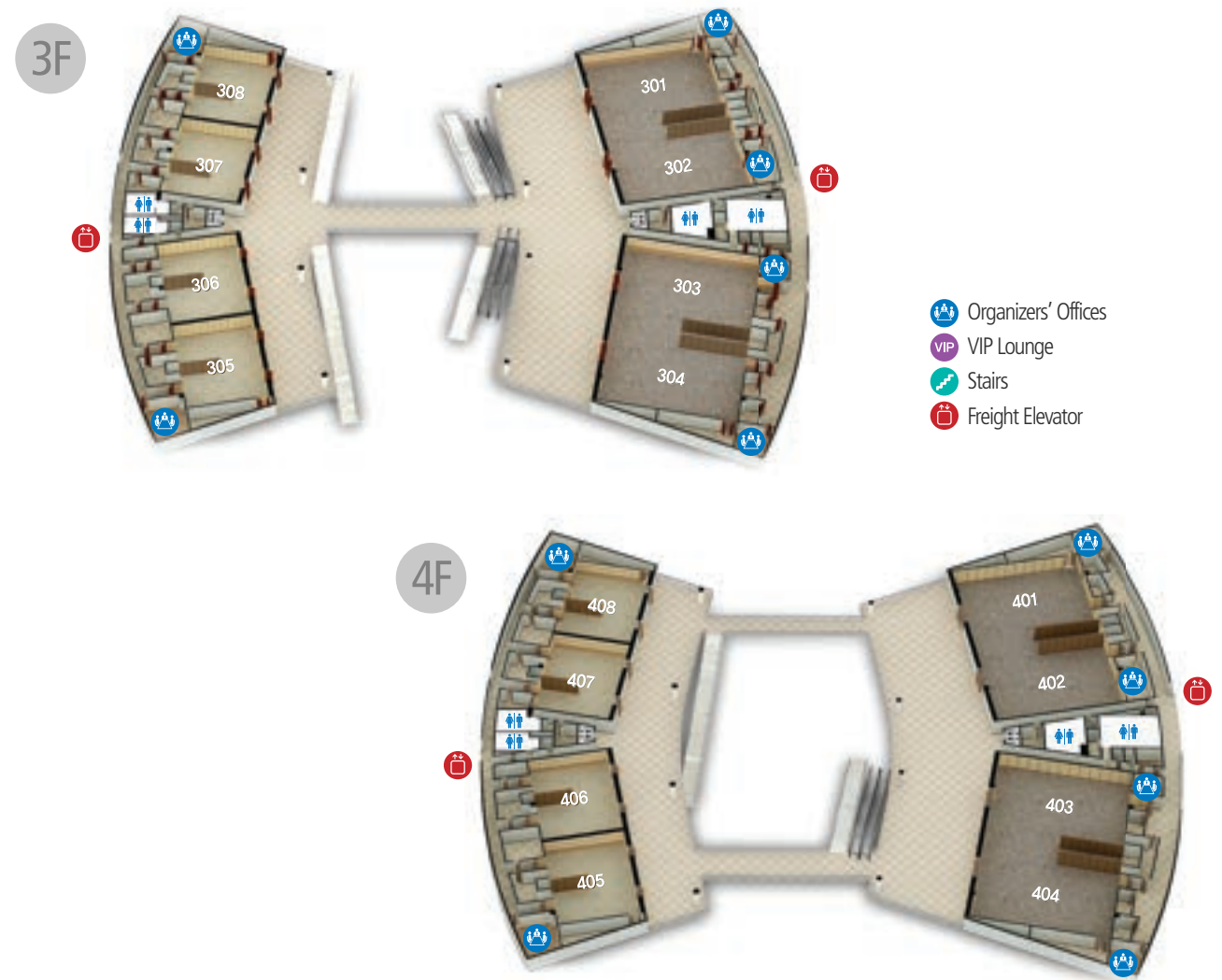
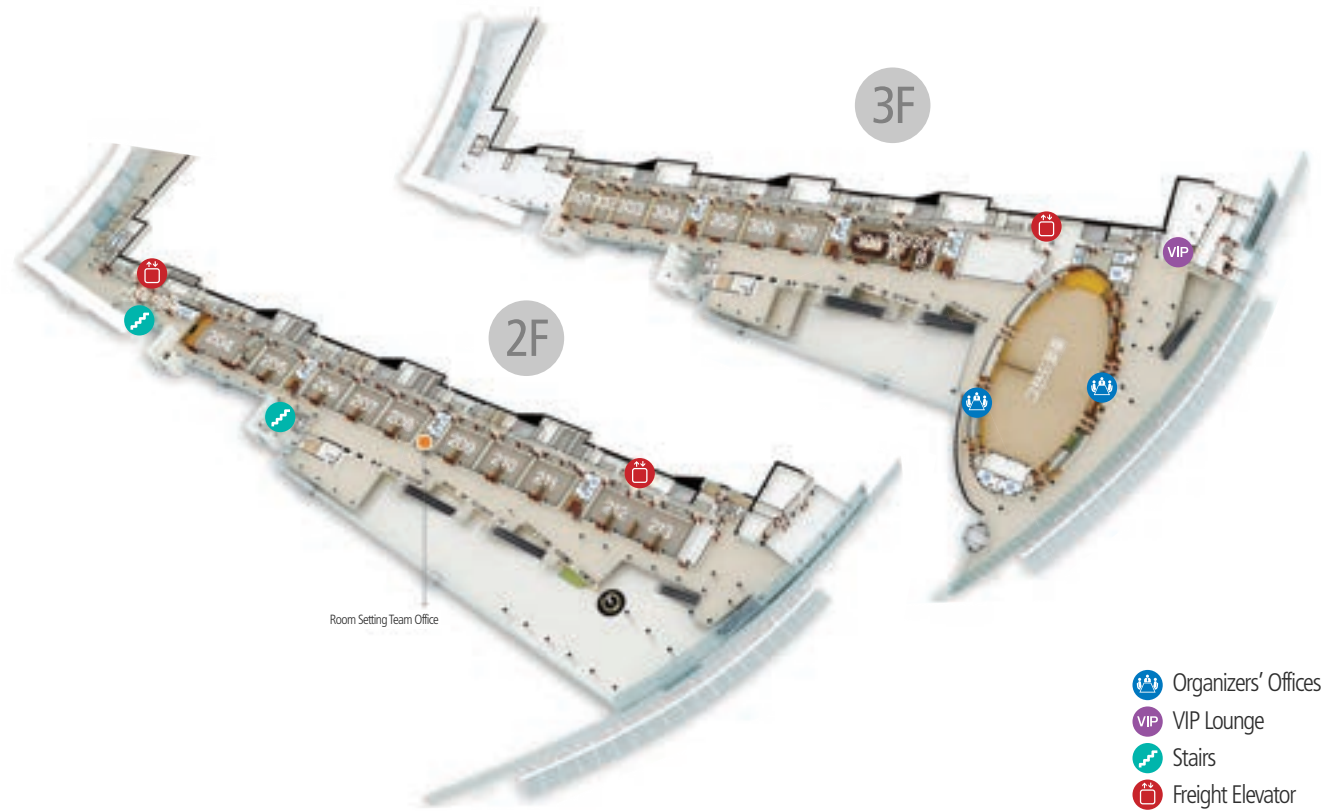


Category	Content				
	Width * Length(m)	Height(m)	Area(m <sup>2</sup> )		
Dimensions	A	32 X 25	10	830	
	B	32 X 25	10	830	
	A+B	32 X 50	10	1,660	
	Stage	12 X 7.5	0.9	Fixed on A Side	
Capacity	Lecture(Classroom)	Theater	Banquet	Reception	
	A	400	800	450	1,000
	B	400	800	450	1,000
	A+B	800	1,600	960	2,000
Equipment	Lobby facing KINTEX 2: 500pax, banquet type Floor Load : 0.5 ton/m <sup>2</sup>				
	8-language simultaneous interpretation booths Screen(built-in, 300") (300", 8.2m x 6.1m)				
	Beam Projector LCD 30,000 ANSI 15 microphones (9 wired, 6 wireless)				
	Main Speaker 1500w 2v(Line-Array) Auxiliary Speaker 1200w 2v(Line-Array) Ceiling Speaker 300w 24v				
Electric Banner Hanger	Stage center : 11m X 11m Both sides of the stage : 9m X 8.3m Center of the back side : 12m x 7m				
	Floor finishing material : carpet				
Subsidiary Facilities	2 organizers' offices, VIP lounge (8 persons), dressing room, storage room				



# Conference Rooms

The 37 conference rooms located in KINTEX 1 & 2 are equipped with AV systems and can be divided as well as combined to hold events of all sizes, and seats may be arranged in lecture, theater, banquet, and reception settings to match the purpose.



## KINTEX 1 Conference Rooms

- Various Conference Rooms
  - Each of the 9 medium-sized conference rooms on the 2nd floor can be divided as well as combined (can be divided into 18 smaller conference rooms)
  - 7 medium sized conference rooms and a VIP conference room are located on the 3rd floor
- Spacious Lobby
  - Spacious lobby for receptions, exhibitions, events, etc.



Conference Room	Divisibility	Dimensions (m/LxWxH)	m <sup>2</sup>	Capacity				Screen	Banner Hanger
				Lecture (Classroom)	Theater	Banquet	Reception		
204	N/A	13×32×4	420	220	360	180	300	200" 4m×4m	6m×1m
205~213	A	13×9×4	117	50	100	50	80	200" 4m×4m	6m×1m
	B	9×13×4	117	50	100	50	80	150" 3m×4m	5m×1m
212+213	A+B	13×18×4	234	120	200	80	150	200" 4m×4m	6m×1m
	Combined	13×36×4	468	250	400	160	300	200" 4m×4m	6m×1m
301	N/A	15×15×4	225	100	160	60	100	150" 3m×4m	6m×1m
302	N/A	9×13×4	117	50	100	50	80	150" 3m×4m	6m×1m
303~307	N/A	13×18×4	234	120	200	80	150	200" 4m×4m	6m×1m
306+307	Combined	13×36×4	468	250	400	160	300	200" 4m×4m	6m×1m
308	N/A	13×18×4	234	34	Hollow-square type			200" 4m×4m	6m×1m
309A	N/A	13×9×4	117	12	U type			200" 4m×4m	6m×1m
309B	N/A	9×13×4	117	20	Hollow-square type			150" 3m×4m	5m×1m

## KINTEX 2 Conference Rooms

- Various Conference Rooms
  - 8 main conference rooms & 8 medium-sized conference rooms (can be combined into 4 larger and divided into 16 smaller conference rooms)



Conference Room	Divisibility	Dimensions (m/LxWxH)	m <sup>2</sup>	Capacity				Screen	Banner Hanger
				Lecture (Classroom)	Theater	Banquet	Reception		
301~304	N/A	20.4×15.4×6	314.2	130	250	110	200	200"	Front : 7m×1ea Side : 6m×2ea
401~404			314.2	130	250	110	200		
301+302	Combined	20.4×30.8×6	624.4	300	520	250	400	250" 200"	Front : 7m×1ea Side : 6m×4ea Rear : 7m×1ea
303+304									
401+402									
403+404	Divisible	12.3×15.3×4	188.2	80	160	88	120	150"	
305~308									
405~408	Divisible	12.3×7.6×4	93.5	40	80	40	60	150"	
305,405									
305,405	Divisible	12.3×7.7×4	94.7	40	80	40	60	150"	
306,406	Divisible	12.3×8.3×4	102.1	40	80	40	60	150"	Front : 6m×1ea Rear : 6m×1ea
306,406	Divisible	12.3×7.0×4	86.1	40	80	40	60	150"	
307,407	Divisible	12.3×7.0×4	86.1	40	80	40	60	150"	
307,407	Divisible	12.3×8.3×4	102.1	40	80	40	60	150"	
308,408	Divisible	12.3×7.3×4	89.8	40	80	40	60	150"	
308,408	Divisible	12.3×8.0×4	98.4	40	80	40	60	150"	



**Highest Level of Services and Infrastructure to Impress,  
the Hub of Asia's MICE Industry**

## **KINTEX**

At KINTEX, underlying values coexist far more than what meets the eye. With differentiated services and dignified banquet services as well as continuously developing exhibition & cultural infrastructure, KINTEX is stepping up as the hub of Asia's MICE Industry

# Catering

KINTEX catering provides quality catering services as well as gourmet meals carefully prepared by kitchen staff from a five-star hotel. KINTEX catering is the best partner for a successful event, from small and medium sized events to large banquets and weddings.

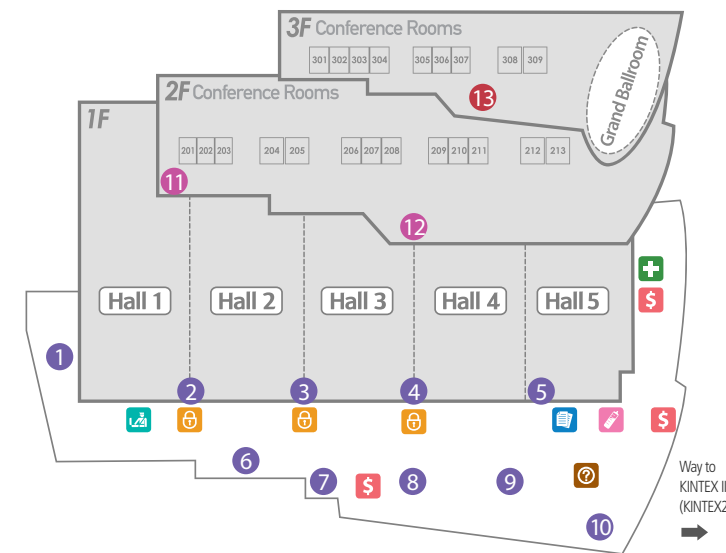


# Subsidiary Facilities

In order to please and accommodate visitors, KINTEX offers a vast range of international cuisine through F&B facilities such as restaurants, snacks & dessert cafés, spacious food courts equipped with 400 seats, and commercial facilities such as convenience stores and business centers.

## KINTEX 1

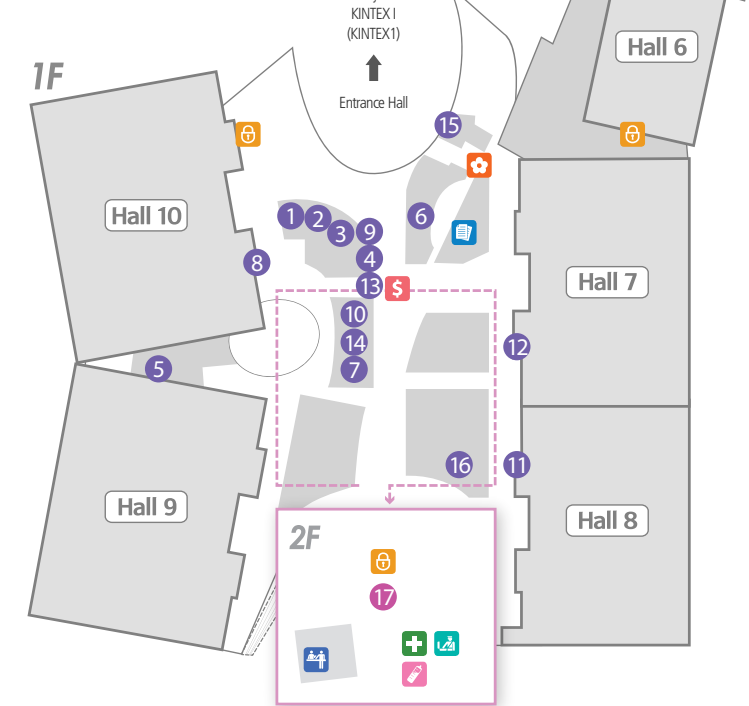
1F 2F 3F



- |                            |                    |                          |                          |                 |
|----------------------------|--------------------|--------------------------|--------------------------|-----------------|
| <b>Food &amp; Beverage</b> | 1F                 | 1 Jeonju Danjine         | 6 Bon Dosirak            |                 |
|                            |                    | 2 CU Convenience Store 2 | 7 Caffé Bene             |                 |
|                            |                    | 3 Dunkin Donuts          | 8 7-Eleven               |                 |
|                            |                    | 4 IM Coffee              | 9 CU Convenience Store 1 |                 |
|                            |                    | 5 TOUS les JOURS         | 10 K-GARDEN              |                 |
|                            | 2F                 | 11 Gyodong DF            | 12 Bon Woori Bansang     |                 |
|                            | 3F                 | 13 Ilsan yeolmu          |                          |                 |
|                            | <b>Convenience</b> | 1F                       | ATM (bank)               | Security Center |
|                            |                    |                          | Medical Office           | Lockers         |
|                            |                    |                          | Nursing Room             | Business Center |
|                            |                    | Information Desk         |                          |                 |

## KINTEX 2

1F 2F



- |                            |    |                           |                           |
|----------------------------|----|---------------------------|---------------------------|
| <b>Food &amp; Beverage</b> | 1F | 1 Myeongdong Noodles      | 10 Doppio Coffee          |
|                            |    | 2 Goga                    | 11 Doppio Coffee          |
|                            |    | 3 Base Camp               | 12 MANGO SIX              |
|                            |    | 4 Efes Kebab              | 13 LOTTERIA               |
|                            |    | 5 Food Court              | 14 CU Convenience Store 3 |
|                            |    | 6 IL MAZZIO               | 15 Najugomtang            |
|                            |    | 7 Seominbobsang           | 16 Pororo Park            |
|                            |    | 8 Yumsemgimbap            |                           |
|                            |    | 9 TOUS les JOURS          |                           |
|                            | 2F | 17 CU Convenience Store 4 |                           |
| <b>Convenience</b>         | 1F | ATM                       | Lockers                   |
|                            |    | Business Center           | Honeybee Flower Shop      |
|                            | 2F | Medical Office            | Security Center           |
|                            |    | Nursing Room              | Lockers                   |

# Transportation

## GTX Construction in 2025,

15 minutes from KINTEX to Seoul Station, 20 minutes from KINTEX to Gangnam district



# MICE Complex Development Plan

KINTEX, stepping up as a mecca for the global MICE industry, will be completed as a global exhibition and convention complex by harmonizing contents with the ICT industry.



### Transportation



**KTX**

Busan Station — 2hrs 40mins —> Seoul Station — 20mins —> Goyang Haengsin Station — 20mins —> KINTEX



**Red Bus**

Seoul Station 9073	Myeongdong Station 9701	Yangjae Station 9700
Hongik Univ. Station M7731	Gangnam Station 9711A	



**Subway**

Line3 Daehwa Station Exit2 — 10mins walk —> KINTEX



**Car**

Address: 217-60, Kintex-ro, Ilsan Seo-gu, Goyang-si, Gyeonggi-do

### How to Get Here

Daehwa Station Exit 2 → Go straight to the crosswalk in front of the Songpo Agricultural Cooperative Federation → Go straight to Jangseong Complex 4 Daemyung Apartment → Cross the street at the crosswalk to the main gate of KINTEX 1 → Arrival



※ Detailed traffic information can be found through the QR code.

### KINTEX, Exhibition Support Complex

- Accommodations: SONO CALM
- Commercial facilities: Hyundai Department Store, Shopping Centers, Restaurants, E-mart Town, Lakins Mall, One Mount, Garosu-gil
- Cultural facilities: Lake Park, KINTEX Camping Ground, Hanwha Aqua Planet, Hyundai Motor Studio, One Mount Water Park & Snow Park



