

POWERFUL DAEGU

Digital Innovation Foothold Suseong Alpha City

BLOOMING OF ABB

Search **SUSEONG ALPHA CITY**

www.alphacity.or.kr

 **Daegu Digital Innovation
Promotion Agency**

Daegu Digital Innovation Promotion Agency, 170 Alphacity 1-ro, Suseong-gu, Daegu, Republic of Korea
Tel. +82-53-655-5600 | Fax. -82-53-655-3501 | Website. www.dip.or.kr

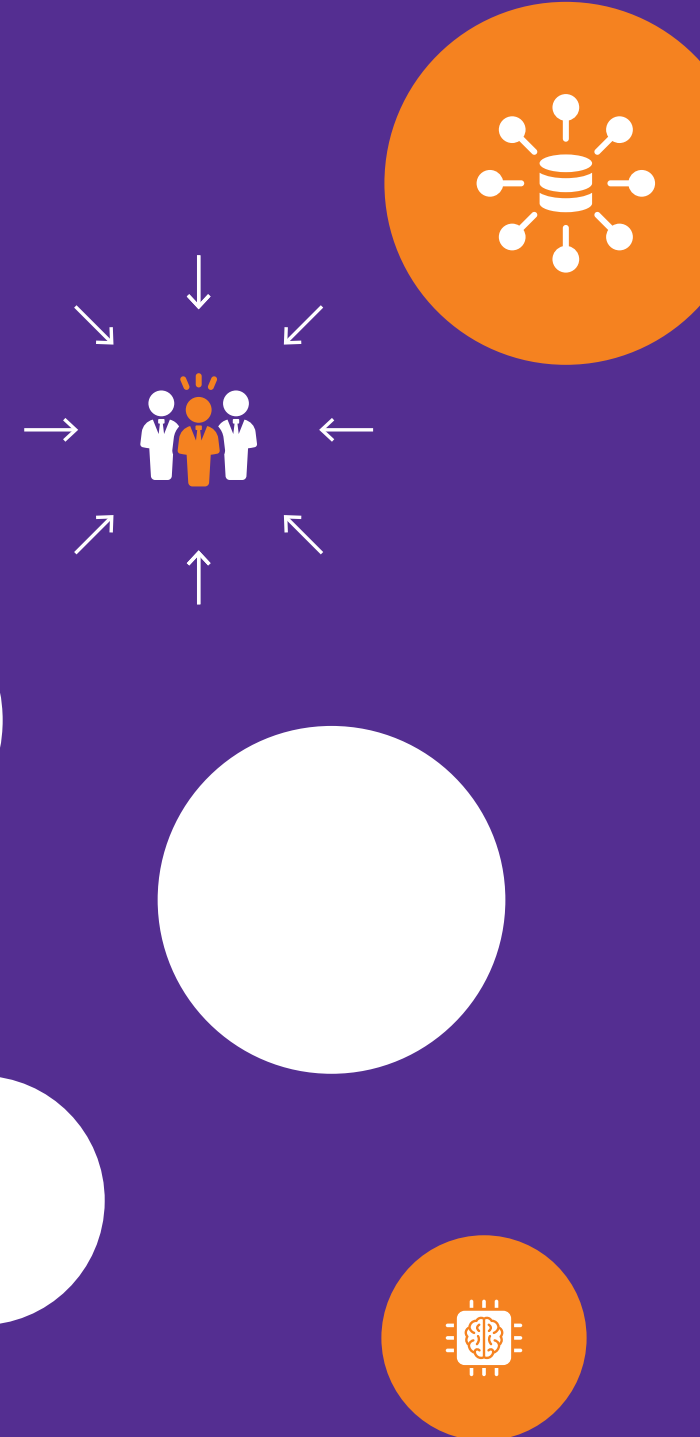
 SUSEONG
ALPHA CITY

 DAEGU CITY

OF
BLOOMING
A.I.
BIG DATA
BLOCKCHAIN

Digital Innovation Foothold Suseong Alpha City

 SUSEONG
ALPHA CITY



Miracle of the Vineyard

The dense vineyard has developed into a foothold of innovation leading the digital industry of Daegu.

We want to name this "Miracle of Vineyard" and make another bigger miracle.

Suseong Alpha City, the innovation foothold of Daegu, is creating the best conditions for local digital industry innovation centering on the ABB* industry, one of the new future industries of Daegu.

*ABB: AI, big data, blockchain

Our local talents and businesses are realizing dreams in Suseong Alpha City and leading the prosperous future of Daegu for the next five decades.

index

Dream to Dream ——— to Realize ——— to Actualize

04 INTRODUCTION

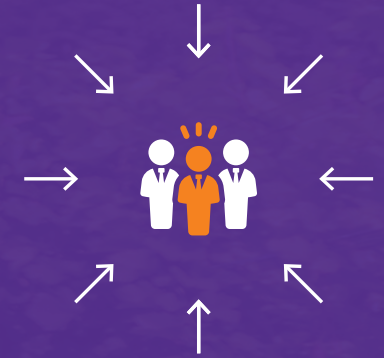
- 04 Current Status of Suseong Alpha City
- 06 Development of Suseong Alpha City

08 SUPPORTIVE INFRASTRUCTURE

- 08 Daegu Digital Innovation Promotion Agency (DIP)
- 09 Major Company Support Facilities

10 SETTLEMENT INFRASTRUCTURE

- 10 Affiliated Public Institutions of Daegu ICT & SW
- 11 Daegu-Gyeongbuk Free Economic Zone



ARTIFICIAL INTELLIGENCE

BIG DATA

BLOCKCHAIN



Current Status of Suseong Alpha City

Suseong Alpha City makes it possible.

DIGITAL INNOVATION Foothold

We create a space for digital talents and companies to take root and grow in Daegu, a space for challenge with the new power of digital.

The digital innovation foothold you've been dreaming of. This is Powerful Daegu! Welcome to **Suseong Alpha City**



Urban Residence

Forming the high-end town most preferred for residence and education in Daegu



High-speed Transportation

Subway line 2, line 3 (extension scheduled), Daegu-Busan expressway, Suseong IC in vicinity, Daegu International Airport in vicinity, Located on Dalgubeol-Daero



Culture & Shopping

Daegu Art Museum, Daegu Kansong Art Museum, Theater, Baseball Stadium, Daegu Media Center, Large Shopping Center (Lotte Mall), Tourist Hotel, etc.



Corporate Support & Public Infrastructure

SW Convergence Technology Support Center, SW Convergence Tech Biz Center, Smart City Center, Sports Industry Support Center, Public Safety-LTE Operation Center 2



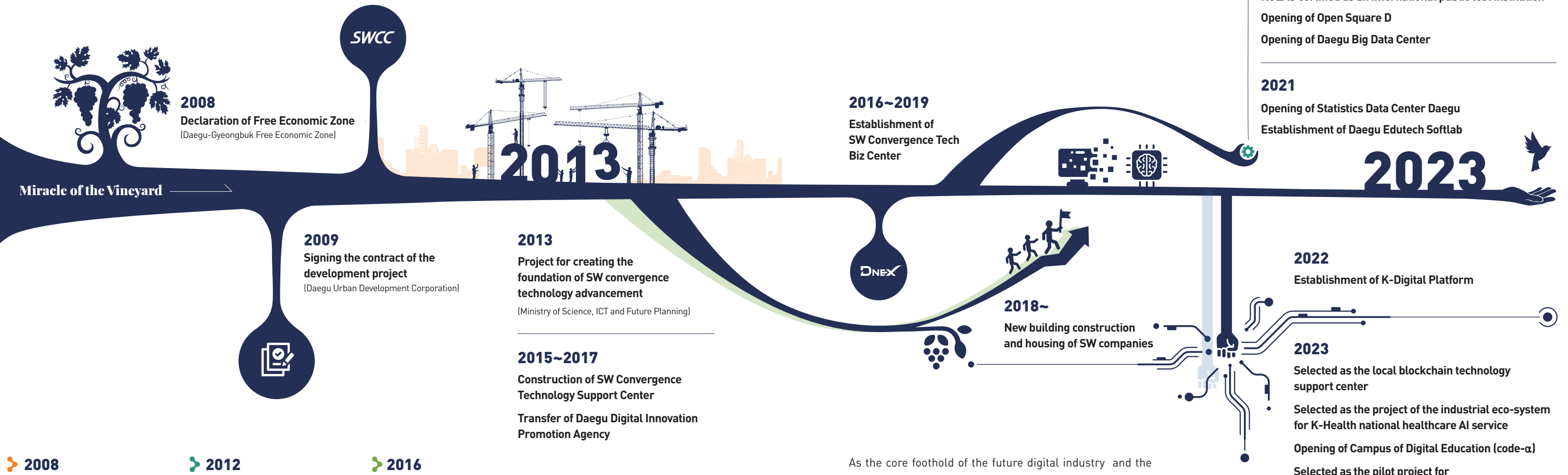
Development of Suseong Alpha City

BLOOMING OF ABB

AI BIG DATA BLOCKCHAIN



➤ 2023 Present



➤ 2008

➤ 2012

➤ 2016



POWERFUL DAEGU

As the core foothold of the future digital industry and the largest ICT/SW complex outside the capital area, Suseong Alpha City is the mecca of knowledge-based service industry that leads the ABB industry of the Republic of Korea by creating the infrastructure for the SW convergence industry and the ecosystem for digital innovation.



Daegu Digital Innovation Promotion Agency

DAEGU DIGITAL INNOVATION PROMOTION AGENCY

The Daegu Digital Innovation Promotion Agency was established in accordance with the Ordinance on the Establishment and Operation of the Daegu Digital Innovation Promotion Agency aimed at contributing to the development of the country and local economy by supporting the realization of digital administration based on digital innovation in Daegu, laying the foundation for the vitalization of the digital economy, and supporting the reinforcement of competitiveness of the relevant companies.

SUPPORT FOR SW INDUSTRY

SW Industry Cultivation

- SW Convergence Cluster 2.0
- Support for local-driven SW growth
- Support for commercialization of SW products of fledgling companies
- Support for commercialization of promising ABB companies as partners of large companies

SW HR Cultivation

- Creating the foundation of SW HR cultivation in local industries
- Construction and operation of Daegu EduTech Softlab
- Support for job creation customized for local industry
- Informatization Academy
- SW Future Building Project

SW Quality Support

- Support for capacity building for SW quality in Daegu and Gyeongsanbuk-do

SUPPORT FOR CONTENT INDUSTRY

Fostering Content Industry

- Operation of Daegu Content Korea Lab
- Support for the development of special local content
- Operation of Daegu Contents of Everything
- Daegu Content Enterprise Support Center
- Support for Cultural Content Start-up Growth Plus

Game

- Operation of Daegu Global Game Center
- Support for employment of the youth in game content business

Webtoon

- Operation of Daegu Webtoon Campus
- Cultivation of Daegu webtoon industry

Media

- Operation of Daegu One-person Media Center
- Operation of Daegu Digital Media Center

SUPPORT FOR ABB INDUSTRY

ABB Convergence

- Support for early market entry in ABB industry and operation of industrial-academic alliance
- Support for the spread of demonstration and distribution of service robots
- Operation of VR-AR Production Support Center Daegu
- Cultivating XR-based metaverse
- Support for Daegu Information Protection Support Center

Big Data

- Operation of Daegu Big Data Center
- Constructing eco-system for data trading
- Constructing open-platform eco-system for automobile industry

SUSEONG ALPHA CITY

Creating Digital Innovation Foothold

- Support for vitalization of Suseong Alpha City
- Securing and operating ABB growth funds
- Attracting and supporting ABB ventures
- Creation of digital innovation foothold

DIGITAL INNOVATION



SW CONVERGENCE TECHNOLOGY SUPPORT CENTER

- Daegu Digital Innovation Promotion Agency
- Daegyeong area Software Quality Innovation Center (SQC)
- Korea Laboratory Accreditation Scheme (KOLAS)
- K-Digital Platform
- VR-AR Production Support Center Daegu
- Telecommunications Technology Association (TTA) Yeongnam Software Testing Center



DNEX SW CONVERGENCE TECH BIZ CENTER

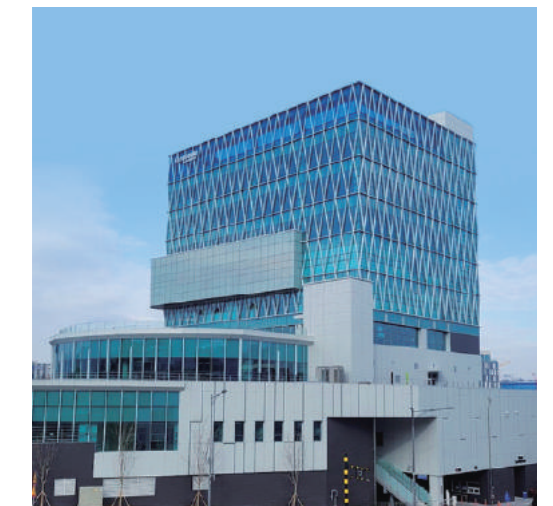
- Daegu Big Data Utilization Center
- Open Square-D
- EduTech Softlab
- SW Company Offices (50)



SMART CITY

SMART CITY CENTER

- Smart City Platform Center
- Smart City Support Center
- SW Industry-Academic Campus (code-α)
- Workplace Daycare Center
- Blockchain Technology Innovation Support Center
- DGIST AI, SW Education Center













DGTP DAEGU TECHNOPARK

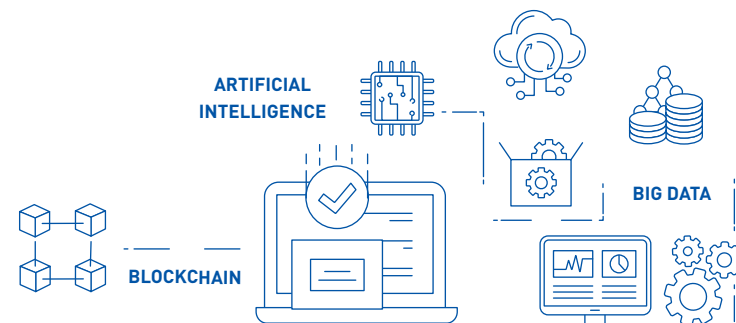
- Sports Project Manufacturing Center
- Pungdong Experiment Data Analysis Lab
- Demonstration Center for Citizens
- Sports Design Architecture Lab
- Company Offices (18)



ICT-SW Public Institutions in Daegu

 Korea Evaluation Institute of Industrial Technology Technology development, R&D education support keit.re.kr	 Korea Education and Research Information Service Education policy support keris.or.kr
 Korea Credit Guarantee Fund Support for guarantee investment for start-up of the youth kodit.co.kr	 National Information Society Agency Industry information network+5G convergence, ICT technology convergence nia.or.kr
 National Information Resources Service Daegu Center Construction of the cloud center based on SDDC (Software-Defined Data Center) www.nirs.go.kr	 Daegu Technopark Industry planning, customized company support, construction of local-based system dgtp.or.kr
 Daegu Gyeongbuk Medical Innovation Foundation R&D support, medical device and medicines support, analysis & evaluation, permission support kmedihub.re.kr	 Dyotec Laboratory Development of knowledge and technology in production, their provision and distribution to relevant industries dyotec.or.kr
 Institute of Advanced Convergence Technology Support for technology and devices for developing cutting-edge smart devices and new convergence products iact.or.kr	 Daegu Policy Institute Research and analysis of major policies of Daegu and suggestion of alternative policies dpi.re.kr

We take a step toward future growth industries by creating the optimal conditions for cooperation with ICT-SW public institutions in Daegu, realize synergistic effects for better competitiveness, and build the ecosystem.



Daegu-Gyeongbuk Free Economic Zone

Eight districts equipped with the infrastructure of the Korean knowledge-based industry and service have been designated to vitalize investment attraction for domestic and foreign investors and support the optimal management environment.

We help companies targeting the domestic and foreign markets by streamlining the administrative process, providing incentives, and creating pleasant residential conditions.

We stably prepare the business site, R&D facilities, and commercial and residential facilities centering on IT convergence, cutting-edge machine parts, and cutting-edge medical and energy industries.

DGFEZ
Daegu-Gyeongbuk Free Economic Zone

Location	Daegu Metropolitan City and Gyeongsangbuk-do (Yeongcheon, Gyeongsan and Pohang)
Area	18.45km ²
Major Types of Business	Cutting-Edge Machine Parts (Architecture & Machine, Automobile, Aircraft Parts), IT Convergence (Software, Display, Mobile, Robot), Cutting-Edge Medicals (Healthcare, Medical Devices, Medicines), Energy

Benefits after Attracting Daegu-Gyeongbuk Free Economic Zone

FREE ECONOMIC ZONE

TAX CUT (for foreign-invested companies in Daegu-Gyeongbuk Free Economic Zone)

Tax	Cut Period / Cut Rate	Cut Condition
National Tax	Tariff	5 years: Exempt Imported capital goods
	Special Consumption Tax Value Added Tax	5 years: Exempt -
Local Tax	Acquisition Tax	100% for up to 15 years Manufacturing industry: Over USD 10 million
	Registration Tax	(Different for each local government) Tourist industry: Over USD 10 million / Logistics industry: Over USD 5 million Medical institution: Over USD 5 million / R&D: Over USD 1 million Information service industry: USD 10 million

MANAGEMENT SUPPORT

Category	Content	
Cash Support	Target	Foreign-invested companies of which more than 30% of the investment comes from foreign investors
	Condition	Evaluation on whether the company has advanced technology, effects of technology transfer and the scale of job creation
	Support Amount	Decided through negotiation; more than 5% of FDI
Infrastructure Support	50% support from the government expenditure; the total finance supported upon the committee decision	
Free Foreign Exchange Trade	Direct external payment for the ordinary trade under USD 100 thousand	
Alleviated Labor Restriction	Exemption from the mandatory employment of persons with disabilities, exemption from regulations on the employment period and target tasks for dispatched workers, permission for unpaid leave	

SITE SUPPORT

Category	Content
Rental	Rental available for state-owned and public lands for 50 years; For rental fees, the estimated amount by multiplying the estimated land price by the rate over 10/1,000 is applied.
Rental Cut	Cut between 50-100% available in accordance with the ordinance of the local government (to be negotiated)
Purchase	private contract and purchase at the construction cost available (for state-owned or public assets)