



HENAN DOJA NEW MATERIALS CO.,LTD  
LUOYANG XINLONG ALUMINUM CO.,LTD

*Seeking truth from facts and keeping pace with the times*

**BUSINESS BROCHURE**

 HENAN DOJA NEW MATERIALS CO.,LTD  
 LUOYANG XINLONG ALUMINUM CO.,LTD

Tel: (+86)371-8610 6999

Mob: +86 18538757222

Email: admin@dojalum.com

Website: www.xinlonglvy.com

Add: Industry Area, Beihuan Road, Yanshi  
District, Luoyang City, Henan Province, China



# 实事求是 与时俱进

Seeking truth from facts and keeping pace with the times

质量稳定·服务满意·价格合适

Stable quality, satisfactory service and appropriate price

## ABOUT US

Luoyang Xinlong Aluminum Co., Ltd., established in March 2010, has more than 1,000 employees. Located in Industry Area, Beihuan Road, Yanshi District, Luoyang City, with a registered capital of RMB 102.8 million, Xinlong Aluminum is a joint-stock enterprise specializing in the production and processing of aluminum sheets, aluminum strips, aluminum foils, cast-rolling coils and other products. The company's two main plant areas cover a total area of more than 700 mu, with an annual production capacity of 500,000 tons. The company has strong technology strength, scientific technology, sophisticated equipment and accurate detection, a complete design, production and inspection system, and a group of high-quality on-site management personnel and quality management team, ensuring the high-efficiency, high-quality, stable and continuous output of products. At present, the casting workshop has 40 cast-rolling production lines, and 10 wide cast-rolling mills under construction in an expedited way. All are based on natural gas and are equipped with high-efficiency environmental protection equipment, for example, bag filter, which comply with the national and local environmental protection requirements. The company is a Class B EIA enterprise, which can ensure continuous production and customer service during the annual control. Currently, the cold rolling workshop has 3 cold rolling mills (1650), one cold rolling mill (1850), one oil cleaner, 2 flying shears (cross shears), one roller shears, 2 stretching and bending straighteners, 20 electric annealing furnaces, 4 high-efficiency and energy-saving gas-fired large-scale annealing furnaces, a finished product workshop storing 20,000 t coils, and a grinding workshop and woodworking workshop that are specially matched with production.

Henan Doja New Materials Co., Ltd is our international trade department, as the connection between Luoyang Xinlong and the world, DOJA continues to provide high quality aluminum products to our clients all over the world.

## BRAND CULTURE 品牌文化

- **实事求是，与时俱进**  
Seek truth from facts and keep pace with the times.
- **以质量稳定赢取市场**  
Win the market with stable quality
- **以客户满意为追求目标**  
Take customer satisfaction as the goal
- **以适应市场为发展方向**  
Take adapting to the market as the development direction

### 质量方针

**适合、稳定、渐进**  
Suitable, stable and progressive

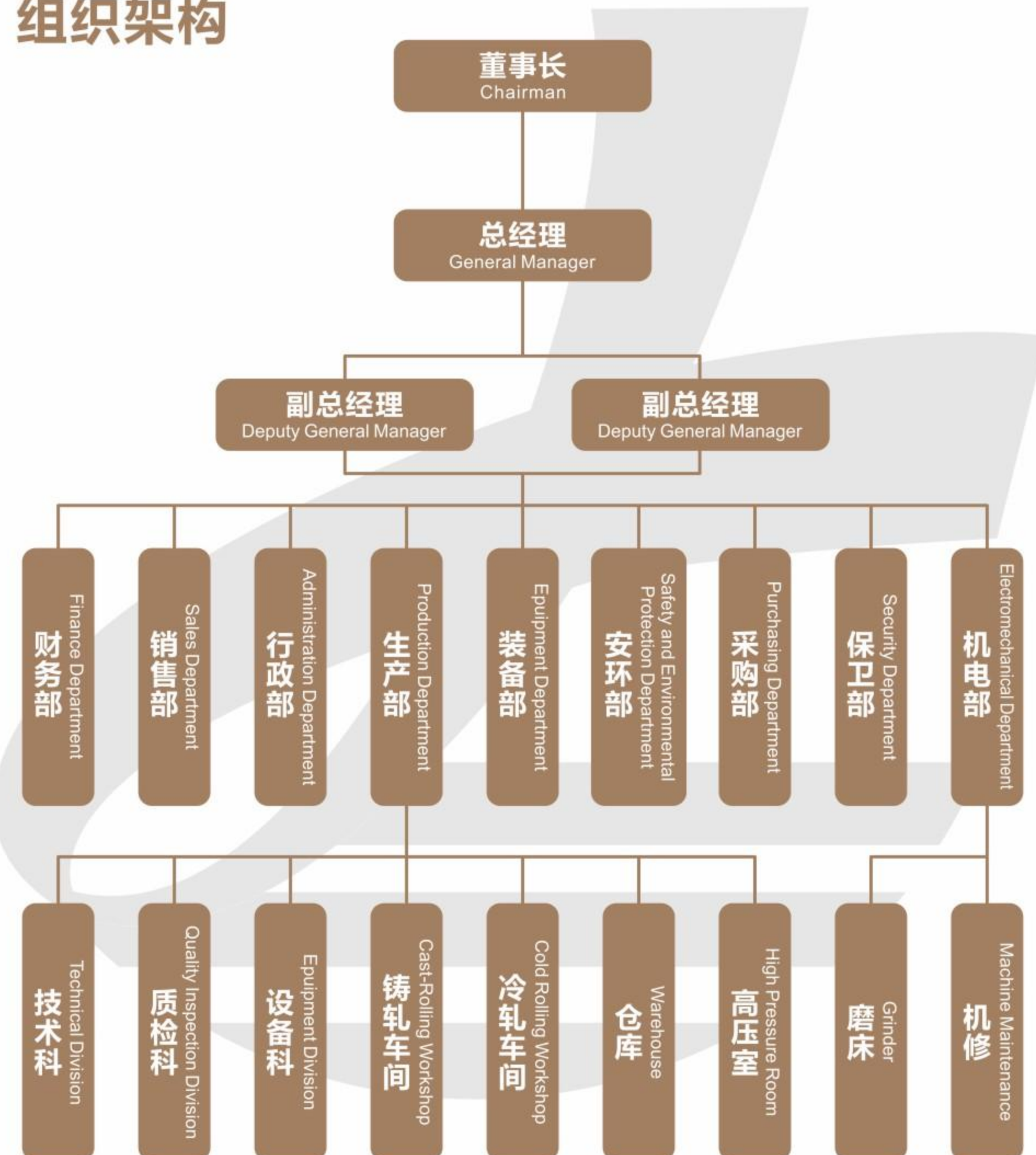
### 服务理念

**坚持以客户为主、建立起周到、及时、准确的服务理念。**  
Service concept: Adhere to the customer-oriented, establish a thoughtful, timely and accurate service concept.

### 市场理念

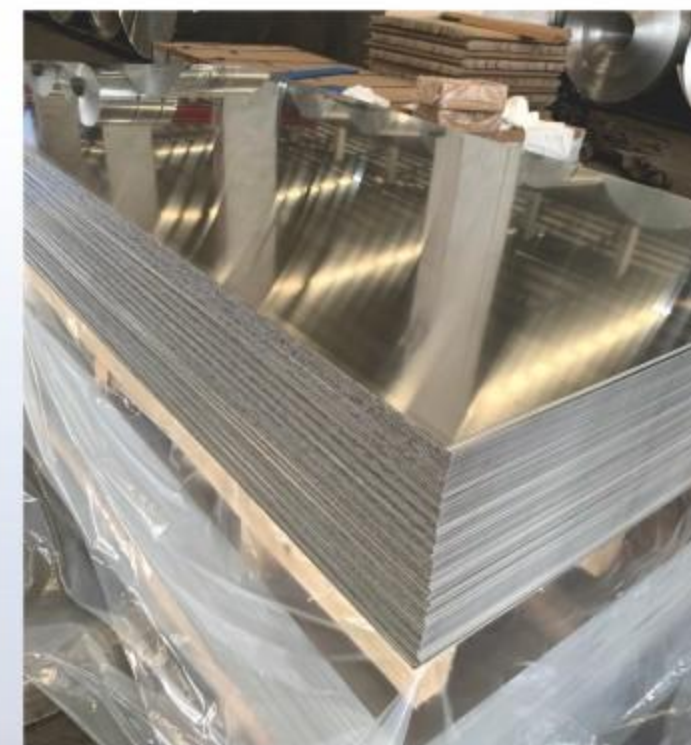
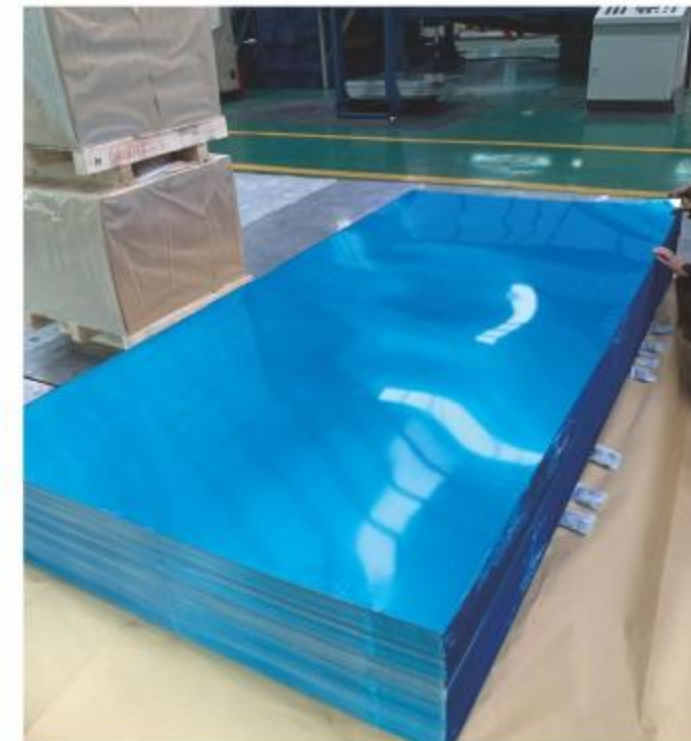
**提前一步提升一点提早准备准确到位。**  
Market concept: One step ahead and get prepared.

## ORGANIZATIONAL STRUCTURE 组织架构



## PRODUCT APPLICATION

Alloy	Temper	Thickness(mm)	Width(mm)	Length(mm)	Remarks
1050/1060/1100	O/H12/H14/H16/ H18/H22/H24/H32/ H111/H112/T6/T651	0.1-6.0	10-2500	10-8000	Customized
3003/3004/3104/3105					
5005/5052/5083/5754/ 5182					
6061/6063/6083					



### Aluminum Sheet

Xinlong Aluminum strictly controls the processing quality, texture, grain structure, composition, etc. of the products to ensure that the surface of the aluminum sheet has no oil spots, no waves, no scratches, no roll marks, neat trimming, and no burrs.

Aluminum sheets are often used in building materials, heat exchangers, capacitor shells, PS plate bases, signs, lamps, power battery shells in lightweight vehicles, tanks on transport equipment, marine sheet metal parts, mobile phone shells, etc.

## Aluminum Coil

Aluminum coils are often used in curtain walls, lighting, tiles, ceilings, oxidation, CTP plate bases, PS plate bases, aluminum-plastic panels, capacitor shells, bottle caps, cosmetic covers, etc.



Alloy	Temper	Thickness(mm)	Width(mm)	ID(mm)	Remarks
1050/1060/1100	O/H12/H14/H16/ H18/H22/H24/H32/ H111/H112/T6/T651	0.1-10	10-2500	305/405/505	Customized
3003/3004/3104/3105					
5005/5052/5083/5754/ 5182					
6061/6063/6083					

# PRODUCT APPLICATION

Alloy	Temper	Thickness(mm)	Width(mm)	ID(mm)	Remarks
8011/8006/8079/ 3003/1235	O/H22/H24	0.006-0.2	20-1500	75/150	Customized



## Aluminum Foil

Aluminum foil is widely used and can be divided into household foil, container foil, battery foil, pharmaceutical foil, air conditioner foil, electronic foil, cigarette foil, cable foil, food packaging foil, decorative foil, etc. With high plasticity, corrosion resistance, electrical conductivity and thermal conductivity, it is widely used in the production of gaskets, lunch boxes, auto parts, capacitors, food packaging, electronic labels, pharmaceutical packaging, aluminum foil tapes, cable tapes, aluminum bottle caps, honeycomb materials, building materials, sound insulation, condensers and other fields.



Alloy	Temper	Thickness(mm)	Width(mm)	Length(mm)	Remarks
1050/1060/1100	O/H12/H14/H16/ H18/H22/H24/H32/ H111/H112/T6/T651	6.0-200	100-2600	100-8000	Customized
3003/3004/3104/3105					
5005/5052/5754/5083					
6061/6063/6083					

## Aluminum Plate

Aluminum plates have good corrosion resistance, weldability, and good forming and processing properties. Commonly used for indoor and outdoor decoration, the aluminum plate is made into a hollowed out plate, embossed plate and other decorative panels through laser engraving, which is used in hotels, shopping malls, corridors, screens, door panels, etc.



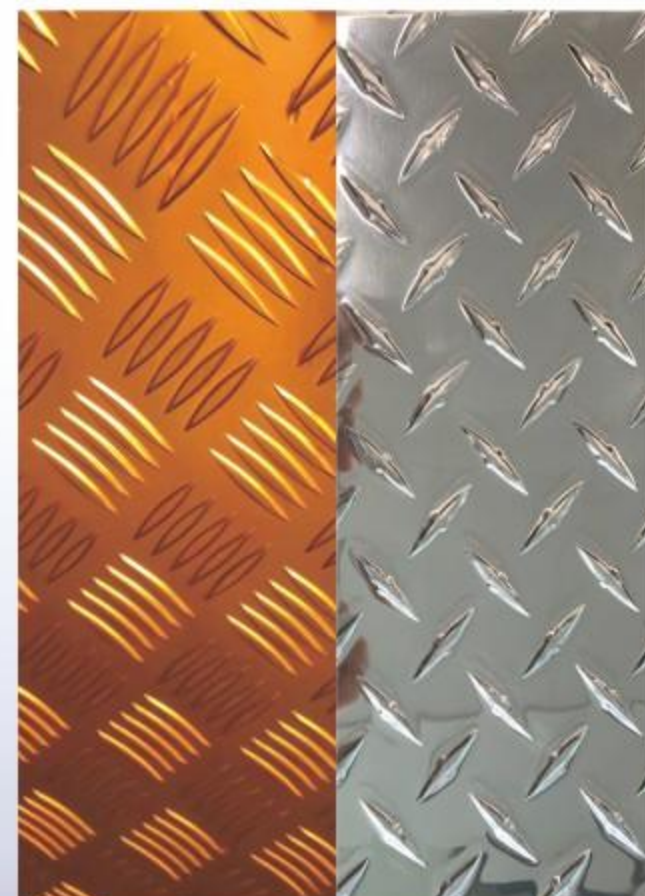
# PRODUCT APPLICATION

Alloy	Temper	Thickness(mm)	Width(mm)	Length(mm)	Remarks
1050/1060/1100	H14/H16/H18/H24/ H32/H111/T6	0.4-10	50-2000	50-8000	Customized
3003/3004/3104/3105					
5005/5052/5083/5754					
6061/6063/6083					



## Aluminum Tread Plate

Aluminum tread plate has high strength, fatigue-resistant, not easily stained on the surface, has good corrosion resistance and excellent weldability. It is often used in ships, yachts, carriages and other saline-alkali environments, and can be used for a long time in the harsh environment of the ocean. It can also be used on skid plates, interior walls, stairs, kitchens, bathrooms, garages, refrigerators, vehicle interior and exterior panels, etc.



## Aluminum Circle

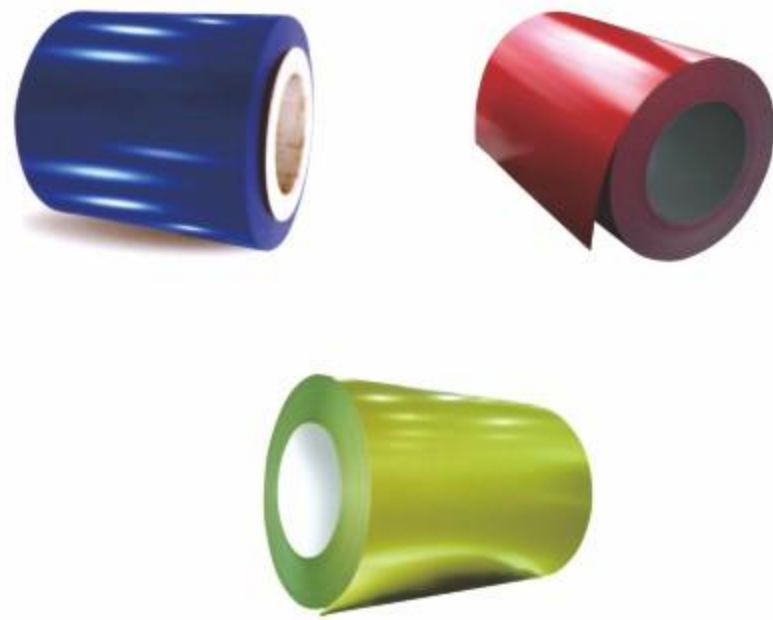
Aluminum circles have extremely high strength and good processability, high thermal conductivity, good plasticity, and are easy to withstand various pressure processing and deep drawing and stretching. Commonly used in kitchen utensils, household appliances, heat preservation, machinery manufacturing, aerospace, completion, mould, printing, etc.



Alloy	Temper	Thickness(mm)	Diameter(mm)	Remarks
1050/1060/1100	O/H12/H14/H32/ H111	0.35-6.0	50-1600	Customized
3003/3105				
5052/5754				

## PRODUCT APPLICATION

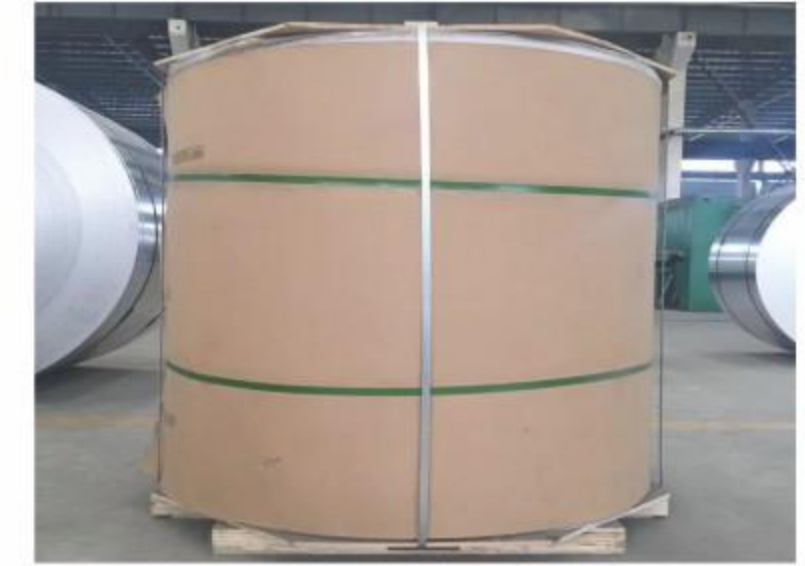
Alloy	Temper	Thickness(mm)	Width(mm)	ID(mm)	Remarks
1050/1060/1100	O/H12/H14/H16/ H18/H22/H24/H32	0.03-5.0	10-1800	305/405/505	Customized
3003/3004/3104/3105					
5005/5052/5754					



### Color Coated Aluminum Sheet&Coil

Color-coated aluminum sheet&coil has the advantages of excellent weather resistance, high gloss retention, stable color, and color change. It is a green building material product with the characteristics of environmental protection, durability and beauty. Architects and designers can realize individual colors for facades and ceilings. Commonly used in aluminum solid panel, aluminum-plastic panels, aluminum honeycomb panels, aluminum ceilings, aluminum-magnesium-manganese layers, aluminum exterior walls, rolling shutter doors, garage doors and other construction industries, electronic and electrical lighting, and furniture industries.

## PRODUCT PACKAGING



# PLANT ENVIRONMENT

